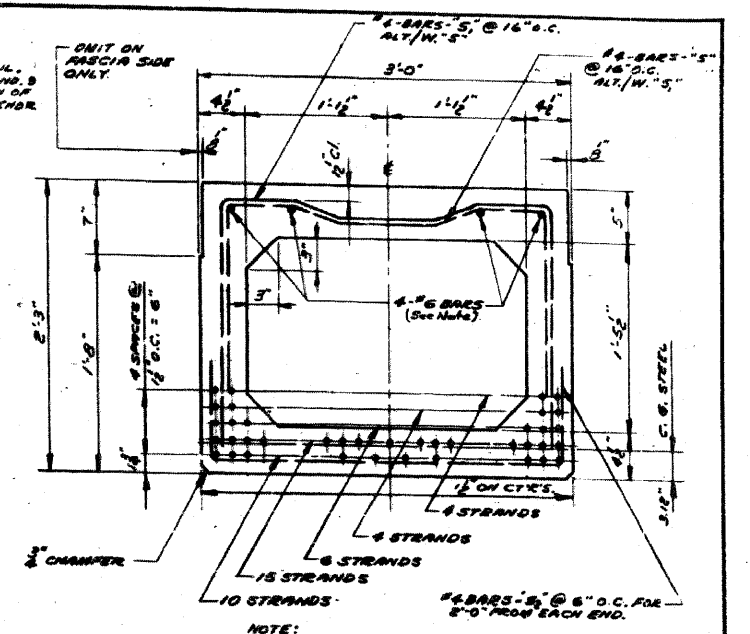


NOTE: ILLINOIS BELL TELEPHONE CO. TO FURNISH AND INSTALL "B" CEMENT CONDUITS WITH THEIR OWN FORCES. THIS WORK IS TO BE COORDINATED BY THE CONTRACTOR CONTACTING THE ILLINOIS BELL TELEPHONE CO. WHEN THE CONDUITS CAN BE INSTALLED. CONDUITS TO BE PLACED IN SIDEWALK AREA OF WEST SIDE OF BRIDGE.

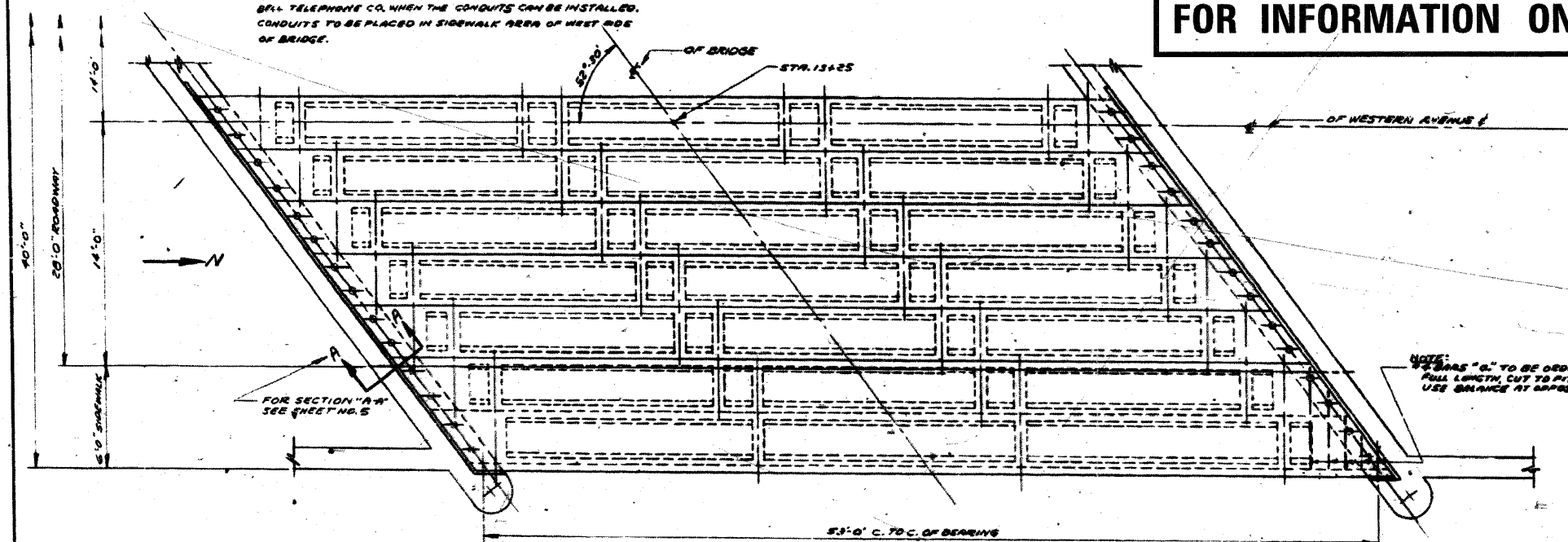
TYPICAL SECTION  
SCALE: 1/2" = 1'-0"

**FOR INFORMATION ONLY**



NOTE: TOTAL OF 39 - 3/8" - 7 THREE STRANDS (LOCATED AS SHOWN)

SECTION A-A  
SCALE: 1/2" = 1'-0"



HALF PLAN  
SCALE: 1/4" = 1'-0"

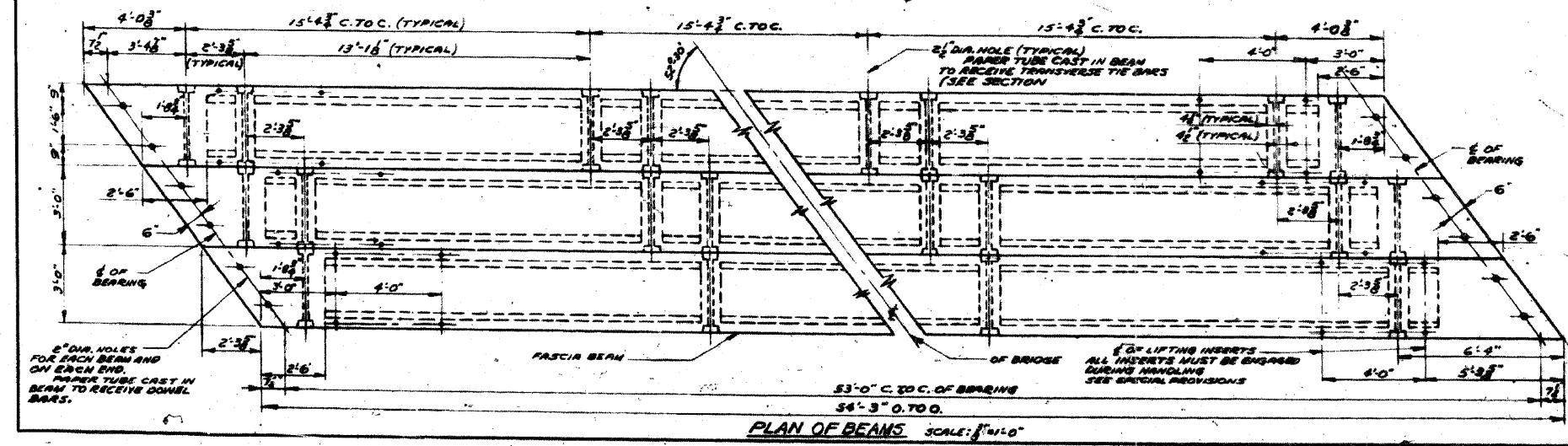
NOTE: #4 BARS "A" TO BE ORDERED TO FULL LENGTH, CUT TO FIT AND USE BRANCE AT OPPOSITE END.

#4-BARS-Q<sub>2</sub> X 6'-3"

#4-BARS-S<sub>2</sub> X 4'-2"

#4-BARS-S<sub>2</sub> X 6'-7"  
#4-BARS-S<sub>2</sub> X 5'-9"

NOTE: THE SPLICES OF #6 TOP BARS SHALL BE TAGGABLE SO THAT NO MORE THAN TWO (2) OCCUR AT ANY POSITION WITH A MINIMUM OF 2'-0" BETWEEN ADJACENT GROUPS OF SPLICES.



PLAN OF BEAMS SCALE: 1/4" = 1'-0"

REVISIONS		
DATE	BY	DESCRIPTION

<b>DEPARTMENT OF HIGHWAYS</b> COOK COUNTY, ILLINOIS	
DANIEL RYAN PRESIDENT BOARD OF COMMISSIONERS	WILLIAM J. MORTIMER SUPERINTENDENT OF HIGHWAYS
<b>DETAILS OF SUPERSTRUCTURE</b> <b>WESTERN AVENUE BRIDGE</b> <b>OVER BUTTERFIELD CREEK</b>	
COMPUTED BY B. B. RIMAN	PROJECT NO. 054-0505 M.F.T.
DRAWN BY F. TANNERBAUM	SCALE AS SHOWN
CHECKED BY R. N. LAUGE	APPROVED <i>M.F. Ryan</i>
APPROVED <i>John J. Seal</i> 1960	DATE 4 17

**APEX**  
CONSULTING ENGINEERS, LLC  
311 E. Wacker Drive, Suite 530  
Chicago, IL 60601  
Phone (312) 977-0980 Fax (312) 977-0661

USER NAME =	DESIGNED -	REVISD -
PLOT SCALE =	CHECKED -	REVISD -
PLOT DATE = 10/13/2011	DRAWN -	REVISD -
	CHECKED -	REVISD -

STATE OF ILLINOIS  
DEPARTMENT OF TRANSPORTATION

EXISTING BRIDGE PLANS (4 OF 6)  
S.N. 016-0772  
SHEET NO. S31 OF S33 SHEETS

F.A.U. 2845	SECTION 2011-206-F	COUNTY COOK	TOTAL SHEETS 18	SHEET NO. 16
			CONTRACT NO. 60R36	
ILLINOIS FED. AID PROJECT				

FOR INFORMATION ONLY