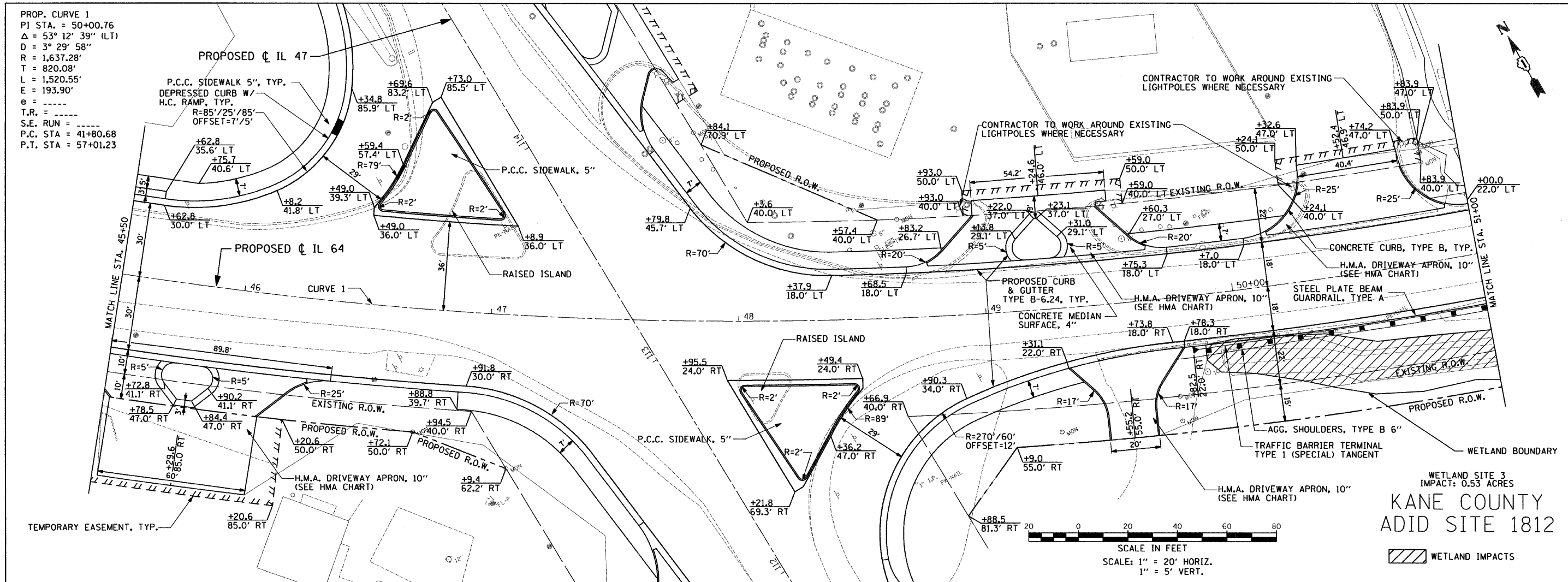
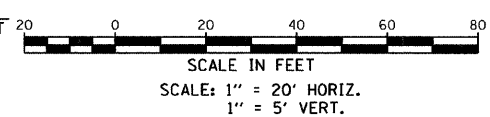


PROP. CURVE 1
 PI STA. = 50+00.76
 $\Delta = 53^\circ 12' 39''$ (LT)
 $D = 3^\circ 29' 58''$
 $R = 1,637.28'$
 $T = 820.08'$
 $L = 1,520.55'$
 $E = 193.90'$
 $\theta = \dots$
 $T.R. = \dots$
 $S.E. RUN = \dots$
 P.C. STA = 41+80.68
 P.T. STA = 57+01.23



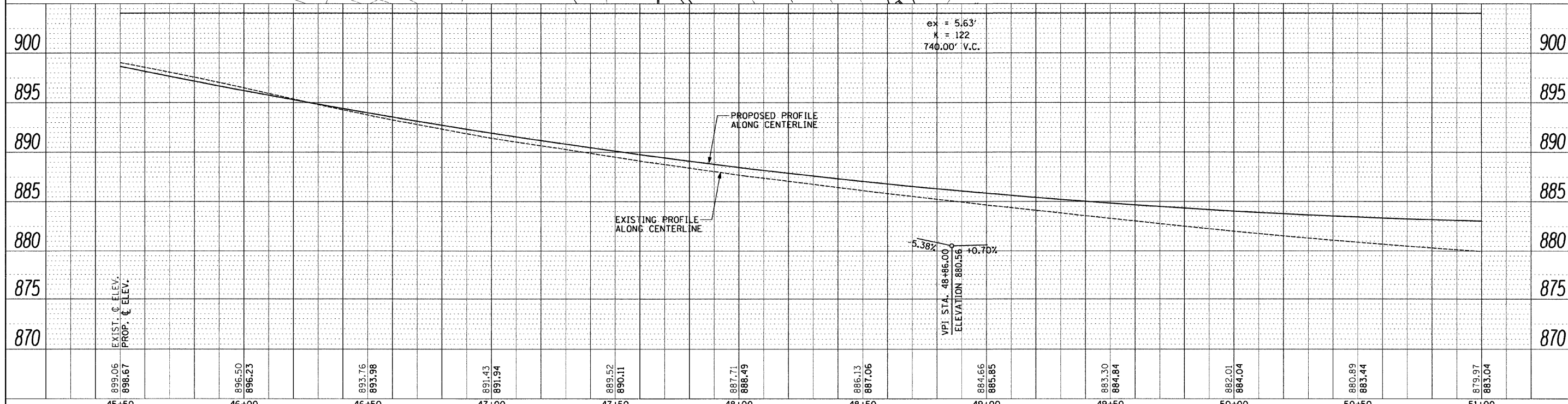
WETLAND SITE 3
 IMPACT: 0.53 ACRES
KANE COUNTY
ADID SITE 1812



WETLAND IMPACTS

DATE	
BY	
PLAN	
NO.	
DATE	
BY	
PLAN	
NO.	

DATE	
BY	
PROFILE	
NO.	
DATE	
BY	
PROFILE	
NO.	



FILE NAME =	USER NAME = .USER	DESIGNED - AR	REVISED -	STATE OF ILLINOIS DEPARTMENT OF TRANSPORTATION	IL 64 AT IL 47 INTERSECTION IMPROVEMENTS			F.A.P. RTE. 307	SECTION 126N-1	COUNTY KANE	TOTAL SHEETS 156	SHEET NO. 20	
#FILE#	10-12-2011	DRAWN - AR	REVISED -		SCALE: 1" = 20'			SHEET NO. 2 OF 8 SHEETS STA. 45+50 TO STA. 51+00			CONTRACT NO. 62278		
	PLOT SCALE = 20.0000' / IN.	CHECKED - RS	REVISED -		ILLINOIS FED. AID PROJECT								
	PLOT DATE = 10/11/2011	DATE - 09-01-2011	REVISED -										