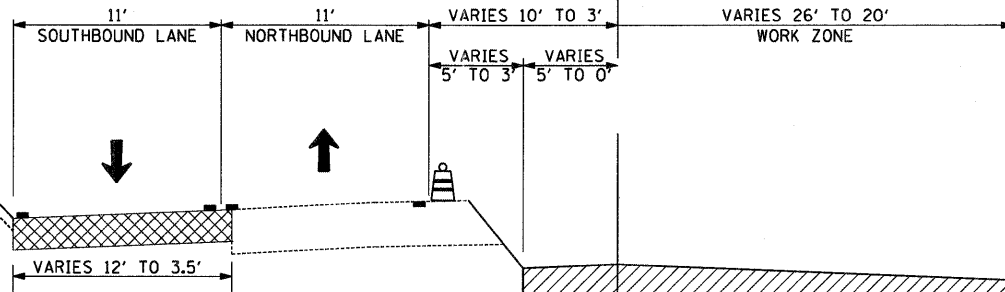


PR-R/W

EX-R/W

EX-R/W

PROPOSED C/L



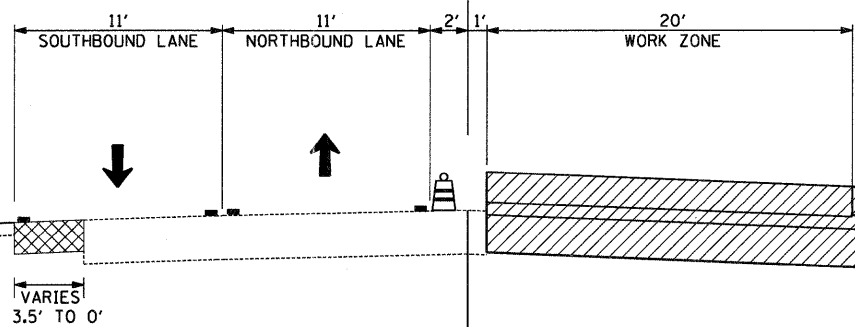
**MOT - STAGE 1**  
**IL 47**  
 STA. 113+22 TO STA. 118+80

PR-R/W

EX-R/W

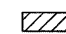




EX-R/W

PROPOSED C/L



**MOT - STAGE 1**  
**IL 47**  
 STA. 118+80 TO STA. 123+15

**LEGEND:**

-  CONSTRUCTION DURING STAGE
-  TEMPORARY PAVEMENT 10"
-  DRUM WITH MONODIRECTIONAL FLASHING LIGHT
-  DIRECTION OF TRAFFIC
-  PAVEMENT MARKING

FILE NAME =  
 #FILEL\*

USER NAME = .USER.  
 PLOT SCALE = 5.0000 / IN.  
 PLOT DATE = 9/1/2011

DESIGNED - AR  
 DRAWN - AR  
 CHECKED - RS  
 DATE - 09-01-2011

REVISED -  
 REVISED -  
 REVISED -  
 REVISED -

**STATE OF ILLINOIS**  
**DEPARTMENT OF TRANSPORTATION**

**IL 64 AT IL 47 INTERSECTION IMPROVEMENTS**  
**SUGGESTED STAGE 1 MOT TYPICAL SECTIONS**

SCALE: SHEET NO. 1 OF 1 SHEETS STA. TO STA.

F.A.P. RTE.	SECTION	COUNTY	TOTAL SHEETS	SHEET NO.
307	126N-1	KANE	156	36
CONTRACT NO. 62278				
ILLINOIS FED. AID PROJECT				