

ROUTE MARKERS

FOR U.S. ROUTES
M1-40-2424

FOR ILLINOIS ROUTES
M1-50-2424

R.R. UNMARKED ROUTES
SPECIAL 24" x 18" VARIABLE
4" BLACK LETTERS ON WHITE
REFLECTIVE BACKGROUND

ARROWS SIGNS

M5-1L-2115

M5-1R-2115

M6-1-2115

M6-1-2115

M6-3-2115

CARDINAL DIRECTION & DETOUR SIGNS

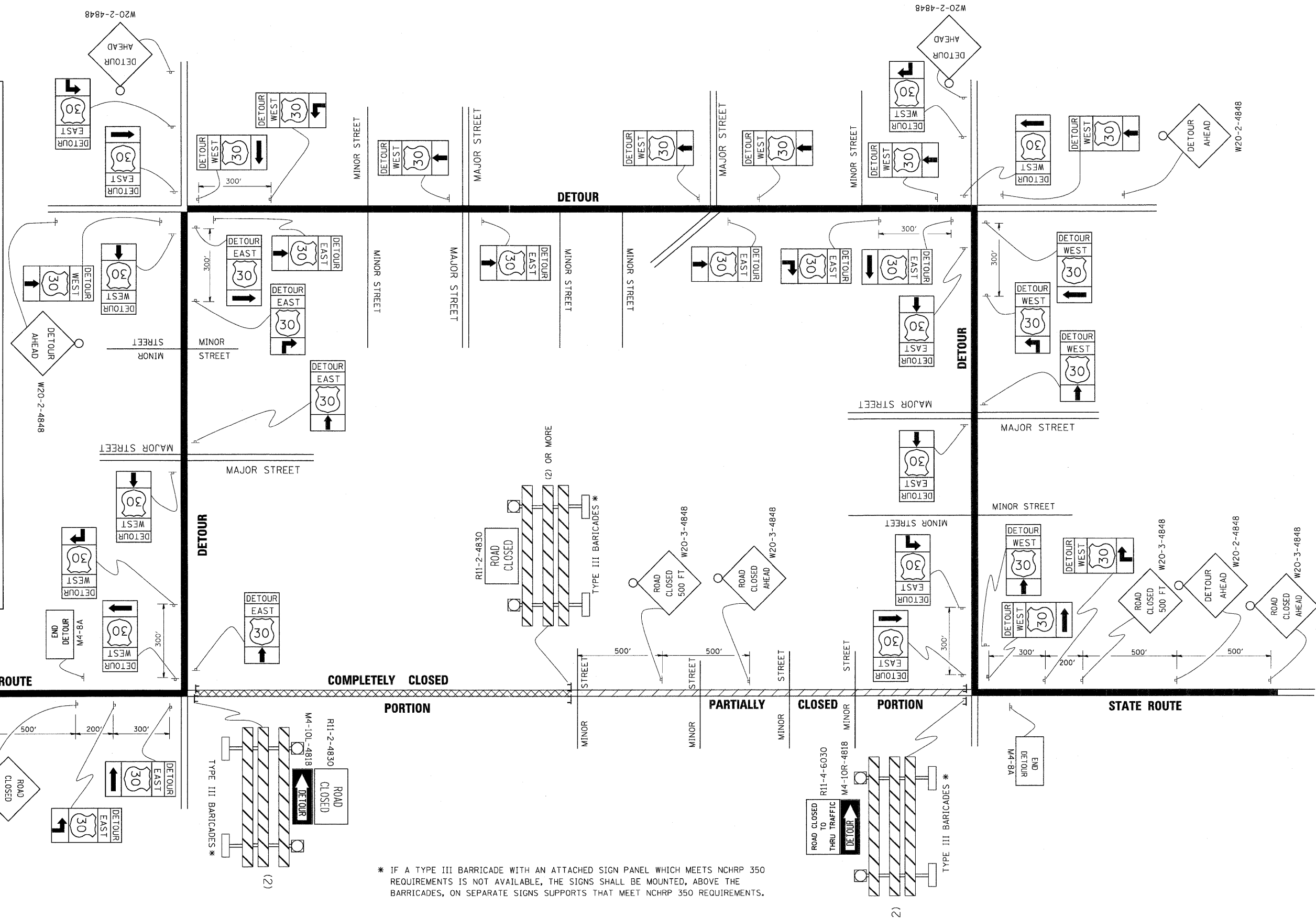
NORTH M3-1-2412

EAST M3-2-2412

SOUTH M3-3-2412

WEST M3-4-2412

DETOUR M4-8-2412



* IF A TYPE III BARRICADE WITH AN ATTACHED SIGN PANEL WHICH MEETS NCHRP 350 REQUIREMENTS IS NOT AVAILABLE, THE SIGNS SHALL BE MOUNTED, ABOVE THE BARRICADES, ON SEPARATE SIGNS SUPPORTS THAT MEET NCHRP 350 REQUIREMENTS.

FILE NAME =	USER NAME = drivakosgn	DESIGNED -	REVISED - 10-18-02	STATE OF ILLINOIS DEPARTMENT OF TRANSPORTATION	DETOUR SIGNING FOR CLOSING STATE HIGHWAYS			F.A.P. RTE. 307	SECTION 126N-1	COUNTY KANE	TOTAL SHEETS 156	SHEET NO. 108
ct:\pawork\VPWIDOT\DRIVAKOSGN\d0188315\21.dgn		DRAWN -	REVISED - R. BORO 09-14-09		SCALE: NONE SHEET NO. 1 OF 1 SHEETS STA. TO STA.			TC-21 CONTRACT NO. 62278				
		PLOT SCALE = 49.9999' / IN.	REVISED -		FED. ROAD DIST. NO. 1 ILLINOIS FED. AID PROJECT							
		PLOT DATE = 9/14/2009	REVISED -									