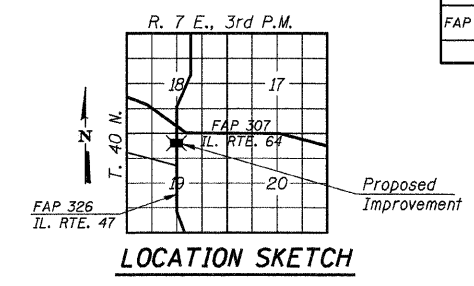


ROUTE NO.	SECTION	COUNTY	TOTAL SHEETS	SHEET NO.
FAP 326	126N-1	KANE		151
ILLINOIS				

Sheet 1 of 3

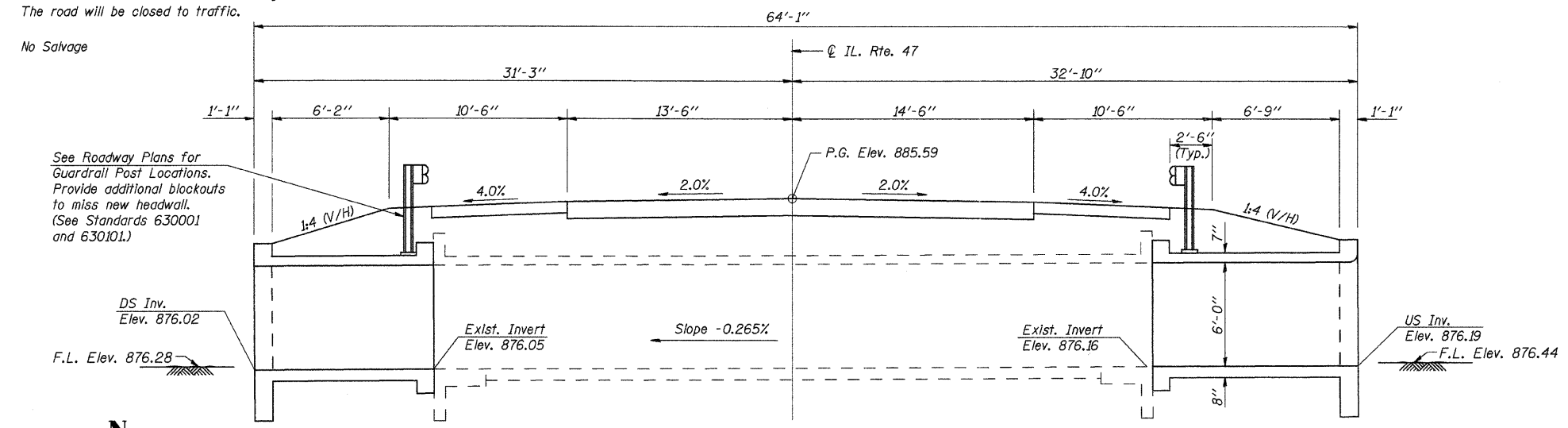
Existing Structure: Station 105+90.80
 Single Barrel R.C. Box, 6' x 6',
 41'-8" long with vertical cantilever wing walls.
 The Contractor shall extend the existing culvert.
 The road will be closed to traffic.

Bench Mark: Box cut in north end of concrete headwall
 20.58' Rt. Sta. 106+02.82; Elev. 883.67

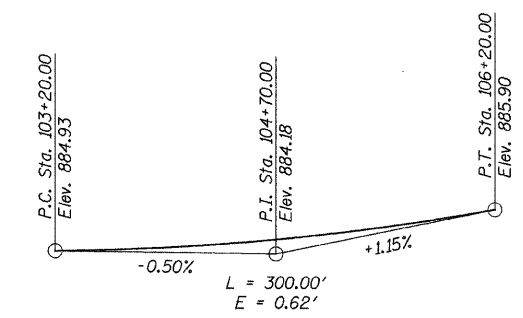


GENERAL NOTES

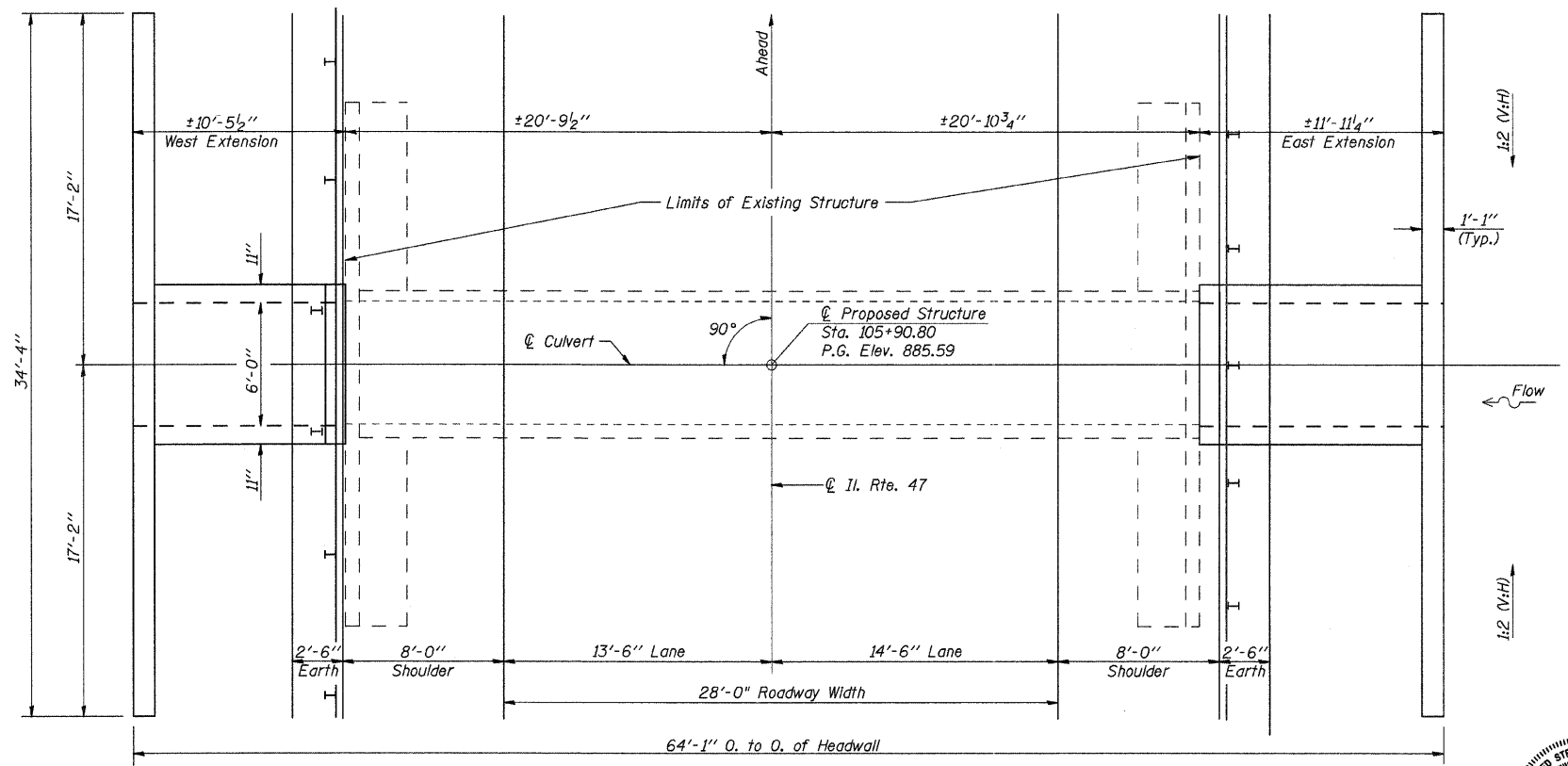
Reinforcement bars shall conform to the requirements of ASTM A706, Grade 60.
 The precast concrete alternate is not allowed.
 For backfilling and embankment, see Standard Specifications.
 A distance of half the length of the wingwall but not less than 6 ft. of the Barrel shall be poured monolithically with the wingwalls.
 Exposed edges shall have a 3/4" chamfer.



LONGITUDINAL SECTION
 (Looking North)



PROPOSED PROFILE GRADE



PLAN

DESIGN STRESSES

$f'_c = 3,500$ psi (Concrete)
 $f_y = 60,000$ psi (Reinforcement)

LOADING HS20

Allow 50#/#ft² for future wearing surface.

DESIGN SPECIFICATIONS

2002 AASHTO Specifications

DESIGNED	S.F.M.
CHECKED	F.J.S.
DRAWN	K.T.R.
CHECKED	A.R.K. & S.F.M.

TOTAL BILL OF MATERIAL

ITEM	UNIT	QUANTITY
Concrete Box Culverts	Cu. Yd.	42.4
Reinforcement Bars	Pound	6,420
Expansion Bolts 3/4" x 1'-0"	Each	32
Concrete Removal	Cu. Yd.	0.8



Salvatore F. Madonia 05/02/11
 ILLINOIS STRUCTURAL NO. 3305 (Expires 11/30/2012)

GENERAL PLAN AND ELEVATION
 F.A.P. RTE. 326 - IL. RTE. 47
 SECTION 126N-1
 KANE COUNTY
 STATION 105+90.80

4440 ASH GROVE SPRINGFIELD, IL 62711 (217) 793-8800 WWW.FEHR-GRAHAM.COM	FEHR-GRAHAM & ASSOCIATES, LLC ENGINEERING AND SCIENCE CONSULTANTS PREPARED BY: RESOURCES & SERVICES, A DIVISION OF SPRINGFIELD, IL	JOB NO.: 48520H FILE: GPE.DGN DATE: 04-25-11
--	---	--