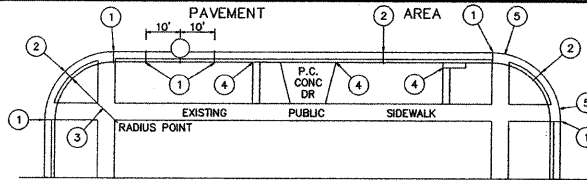


NOTE: CONTRACTOR SHALL MILL BEFORE PATCHING.

HOT-MIX ASPHALT MIXTURE REQUIREMENTS

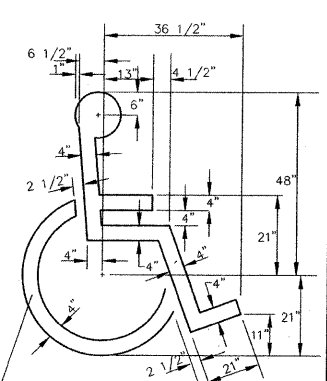
MIXTURE TYPE	AIR VOIDS @ NDES
ROADWAY	
HOT-MIX ASPHALT SURFACE COURSE, MIX "C", N50, (IL-9.5mm), 2"	4% @ 50 GYR
HOT-MIX ASPHALT BINDER COURSE, IL-19.0, N50, (IL-19 mm), 2-1/4"	4% @ 50 GYR
LEVELING BINDER (MACHINE METHOD), N50, (IL-9.5mm), 1"	4% @ 50 GYR
HOT-MIX ASPHALT BASE COURSE, 6" (HMA BINDER IL-19 mm)	4% @ 50 GYR
PATHWAY	
HOT-MIX ASPHALT SURFACE COURSE, MIX "C", N50, (IL-9.5mm), 1-1/2"	4% @ 50 GYR
HOT-MIX ASPHALT BINDER COURSE, IL-19.0, N50, (IL-19 mm), 2"	4% @ 50 GYR
VETERANS PARK PARKING LOT	
HOT-MIX ASPHALT SURFACE COURSE, MIX "C", N50, (IL-9.5mm), 2"	4% @ 50 GYR
PATCHING	
CLASS D PATCH, (HMA BINDER IL-19 mm), 8"	4% @ 70 GYR
DRIVEWAYS	
HOT-MIX ASPHALT DRIVEWAY REPLACEMENT, 3" (HOT-MIX ASPHALT SURFACE COURSE, MIX "C", N50, (IL-9.5mm), 3")	4% @ 50 GYR

THE UNIT WEIGHT TO CALCULATE ALL HOT-MIX ASPHALT SURFACE MIXTURE QUANTITIES IS 112 LBS/SQ YD/IN.
 "THE "AC TYPE" FOR POLYMERIZED HMA MIXES SHALL BE "SBS/SBR PG 70-22" AND
 FOR NON-POLYMERIZED HMA THE "AC TYPE" SHALL BE "PG 64-22"
 UNLESS MODIFIED BY DISTRICT ONE SPECIAL PROVISIONS"
 "FOR "PERCENT OF RAP" SEE DISTRICT ONE SPECIAL PROVISIONS"

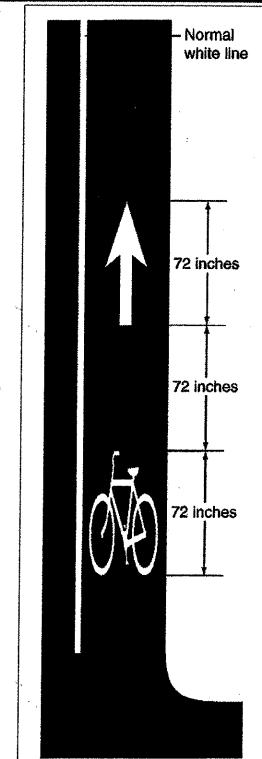


JOINT DETAILS

- NOTES**
- EXPANSION JOINTS AT TANGENT POINTS AND 150 FOOT INTERVALS, CONSISTING OF ONE INCH PREMOLDED JOINT FILLER MATERIAL WITH #8 DOWEL BARS, 18" IN LENGTH, GREASED, PROVIDE EXPANSION CAP ON ONE END. ALSO CONSTRUCT THIS JOINT TEN FEET EACH SIDE OF PROPOSED UNDERGROUND STRUCTURE.
 - CONTRACTION JOINTS AT TWENTY-FIVE FOOT INTERVALS AND AT THE CENTER OF RETURNS.
 - ALL RADII SHALL BE 25 FEET TO THE BACK OF CURB UNLESS OTHERWISE DIRECTED BY THE ENGINEER.
 - LONGITUDINAL EXPANSION JOINT CONSISTING OF ONE INCH PREMOLDED JOINT FILLER.
 - DEPRESS CURB AT LOCATIONS WHERE PUBLIC WALKS INTERSECT CURB LINE AT STREET INTERSECTIONS, ALLEYS, AND OTHER LOCATIONS AS DIRECTED, FOR THE CONSTRUCTION OF RAMPED SIDEWALKS FOR ACCESS BY THE HANDICAPPED.

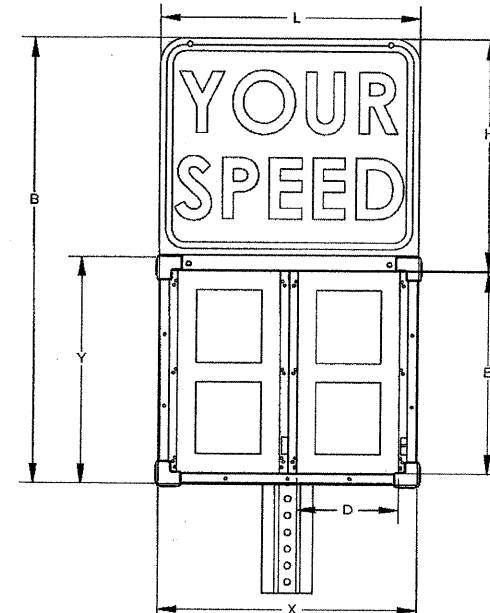


SYMBOL TO BE CENTERED ON WIDTH OF PARKING STALL
 AREA: 6.0 S.F.
HANDICAP SYMBOL



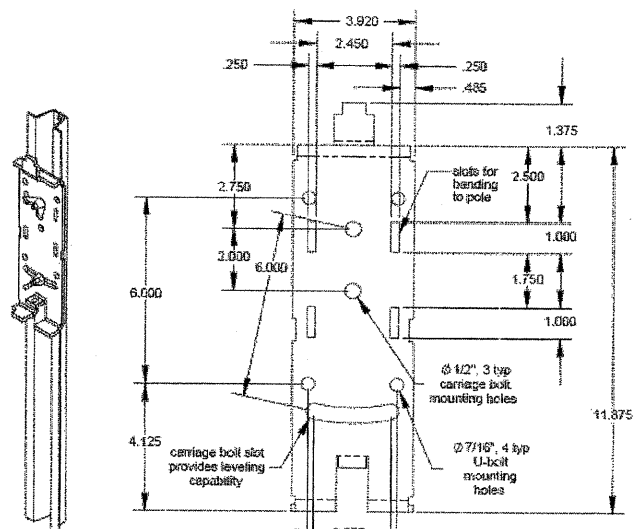
SYMBOL & ARROW PAVEMENT MARKINGS FOR BICYCLE LANES

Dimensions

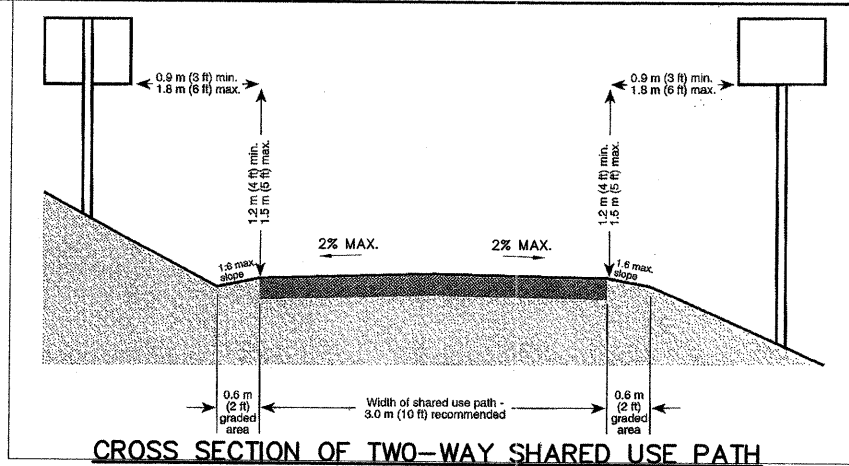


Dim	Sh15
X	24
Y	17
Z	3.12
B	24.3
D	8
E	15
L	24
H	8

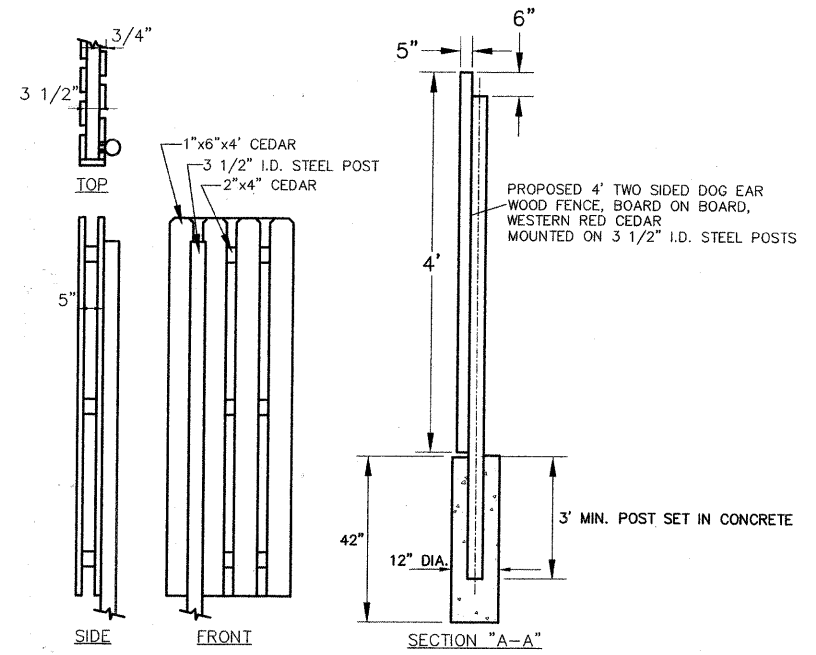
Mounting Bracket



RADAR SPEED SIGN



CROSS SECTION OF TWO-WAY SHARED USE PATH ON SEPARATED ROW-OF-WAY



4' WOOD FENCE DETAIL

Frank Novotny & Associates, Inc.
 Civil Engineers
 Municipal Consultants
 836 Midway Drive • Willmetts, IL • 60097 • Telephone: (630) 887-8640 • Fax: (630) 887-8132
 ILLINOIS PROFESSIONAL DESIGN FIRM NO. 184-000828