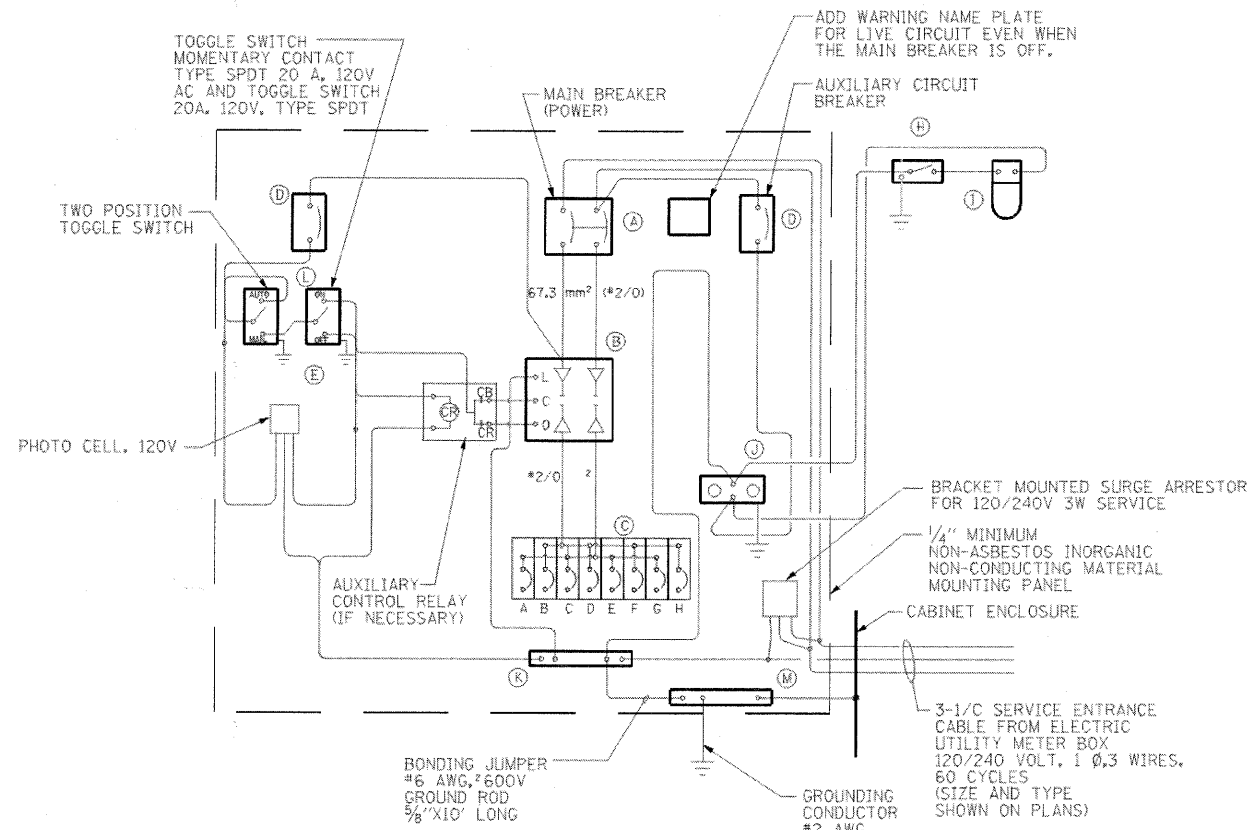


PANEL EQUIPMENT

BILL OF MATERIAL

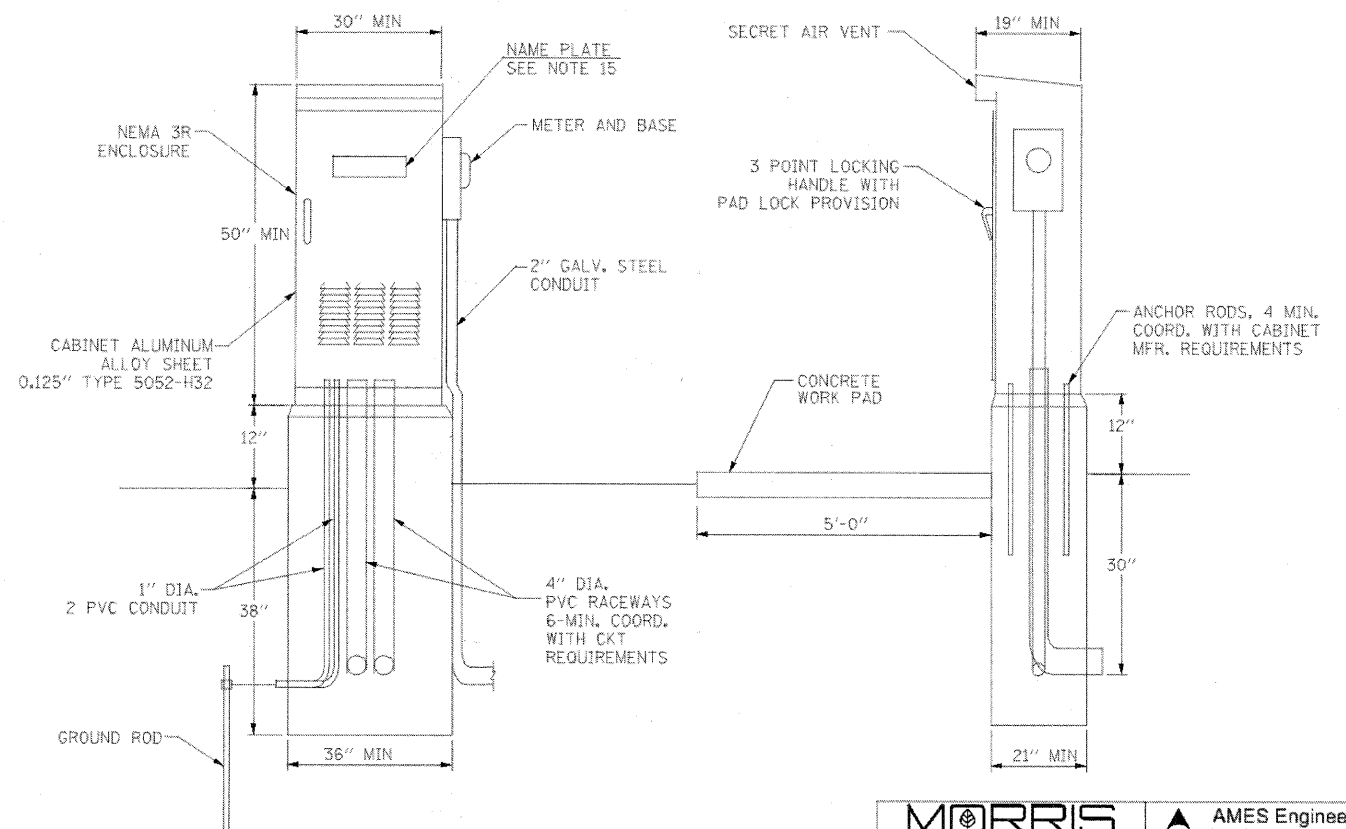
ITEM	QTY.	DESCRIPTION
A	1	MAIN CIRCUIT BREAKER, 2 POLE, 600 VOLT 200AMP. FRAME, 200AMP. NON-INTERCHANGEABLE TRIP INTERRUPTING RATING NEMA-22000 AMP. AT 240 VOLT.
B	1	REMOTE CONTROL SWITCH, ELECTRICALLY OPERATED, MECHANICALLY HELD, 2 POLE, SINGLE THROW, 200 AMP., 600 VOLTS CONTROL CIRCUITS 240 VOLT, ASCO 920.
C	10	CIRCUIT BREAKERS, 1 POLE, 240V., 100AMP. FRAME 50AMP. NON-INTERCHANGEABLE TRIP INTERRUPTING RATING NEMA-22,000 AMP. AT 120 V.
D	2	CONTROL CIRCUIT-CIRCUIT BREAKER, 1 POLE, 240 V., 100AMP. FRAME, 15AMP. NON-INTERCHANGEABLE TRIP INTERRUPTING RATING NEMA-22,000 AMP. AT 120 V.
E	1	PHOTOCCELL, 120V
H	1	SPST 20A SWITCH ON DOOR, TO TURN LIGHT ON WHEN DOOR IS OPEN.
I	1	INCANDESCENT LIGHTING FIXTURE ENCLOSED AND GASKETED WITH 60 WATT, 120 V. LAMP.
J	1	20 A., 120 V., DUPLEX RECEPTACLE, GFCI.
K	1	COPPER NEUTRAL BUS 6.35 mm (1/4") X 25.4 mm (1") X 304.8 mm (12") LONG MOUNTED ON PANEL WITH LUGS AND 4 SPARE LUGS.
L	1	TOGGLE SWITCHES MOUNTED IN 101.6 mm (4") X 101.6 mm (4") BOX.
M	1	COPPER GROUND BUS 6.35 mm (1/4") X 25.4 (1") X 304.8 mm (12") LONG MOUNTED ON PANEL WITH LUGS AND SPARE LUGS.
N	1	SURGE ARRESTOR



WIRING DIAGRAM

NOTES:

- ALL DIMENSIONS ARE IN MILLIMETERS (INCHES) UNLESS OTHERWISE NOTED.
- FOUNDATION SIZE SHALL BE COORDINATED WITH CABINET SIZE AND MFR.
- DOOR SHALL BE CONSTRUCTED FROM SAME TYPE OF MATERIAL AND THICKNESS AS CABINET.
- DOOR SHALL BE EQUIPPED WITH THREE POINT LATCHING MECHANISM WITH NYLON ROLLERS AT TOP THE BOTTOM.
- DOOR HINGE SHALL BE A HEAVY GAUGE CONTINUOUS HINGE WITH A 6.35 mm (1/4") DIA. STAINLESS STEEL HINGE PIN.
- ALL EXTERNAL HARDWARE SHALL BE STAINLESS STEEL.
- CONTROL WIRING TO BE #12 AWG, 600V, TYPE "SIS" GRAY SWITCH BOARD WIRE, STRANDED COPPER.
- METER BOX SHALL BE MOUNTED ON THE SIDE OF CONTROL CABINET, NEAR TO THE SERVICE POLE.
- CABINETS SHALL BE PRIMED AND PAINTED AS SPECIFIED.
- THE HEADS OF CONNECTORS SCREWS SHALL BE PAINTED WHITE FOR NEUTRAL BAR CONNECTION AND GREEN FOR GROUND BAR CONNECTORS.
- ALL WIRING WITHIN THE CABINET SHALL BE COLOR CODED AS INDICATED.  
R = RED BL = BLUE W = WHITE  
B = BLACK Y = YELLOW G = GREEN
- PROVIDE SEALING GROMMETS FOR ALL OPEN WIRING EXTENDED FROM DEVICES IN BOXES OR CABINETS WITHIN THE CONTROL CABINET.
- ALL WIRING SHALL BE NEATLY DRESSED AND SUPPORTED.
- THE CONTROLLER SHALL BE CONSTRUCTED TO U.L. STD. 508 AND BEAR THE U.L. LABEL "ENCLOSED INDUSTRIAL CONTROL PANEL".
- 304.8 mm (12") X 406.4 mm (16") STAINLESS STEEL EXTERIOR NAMEPLATE SHALL BE ENGRAVED TO "LIGHTING CONTROLS CITY OF PALOS HEIGHTS" UNLESS OTHERWISE SPECIFIED.
- SERVICE DISCONNECT SHOULD HAVE UL LABEL AND THE EQUIPMENT SHOULD BE SUITABLE FOR SERVICE ENTRANCE EQUIPMENT.



LTC-16

**MORRIS ENGINEERING, INC.**  
CONSULTING ENGINEERS  
1100 S. LINDSAY, SUITE 100, PALOS HEIGHTS, ILLINOIS 60463  
(815) 717-1087 FAX (815) 470-4884  
www.morriseng.com

**AMES Engineering, Inc.**  
CONSULTING ENGINEERS  
1341 Warren Avenue  
Downers Grove, IL 60515  
(630) 717-1087 FAX (630) 470-4884  
www.ameseng.com

FILE NAME =	USER NAME = #USER#	DESIGNED - BL	REVISED -	<b>STATE OF ILLINOIS DEPARTMENT OF TRANSPORTATION</b>	<b>CITY OF PALOS HEIGHTS LIGHTING IMPROVEMENTS LIGHTING CONTROLLER</b>	F.A.P. RTL.	SECTION	COUNTY	TOTAL SHEETS	SHEET NO.	
#FILE#		DRAWN - RV	REVISED -			34B	09-00046-00-LT	COOK	20	17	
PLOT SCALE = #SCALE#		CHECKED - SA	REVISED -			<b>CONTRACT NO. 63518</b>					
PLOT DATE = #DATE#		DATE - 06-03-11	REVISED -			ILLINOIS FED. AID PROJECT					