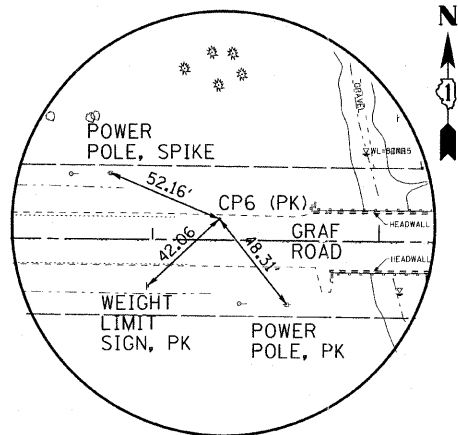


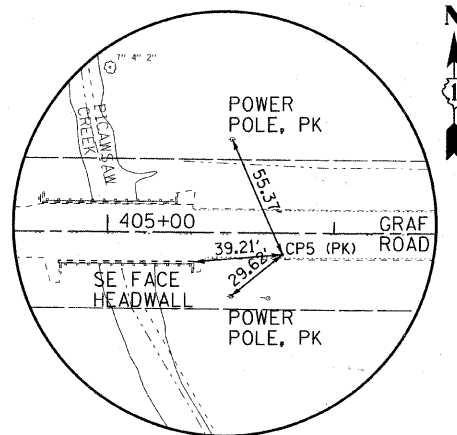
TIE-POINT

CP #26 STA 399+01.70
GRAF ROAD
N 2104612.346, E 891353.632



TIE-POINT

CP #6 STA 404+29.43
GRAF ROAD
N 2033128.937, E 891881.465



TIE-POINT

CP #5 STA 405+77.14
GRAF ROAD
N 2104595.705, E 892029.119

TIE POINT

CP #5
CP #6
CP #26

HORIZONTAL CONTROL

POT 400+00.00
POT 403+84.99
POT 407+98.20
POT 411+00.00

BENCHMARKS

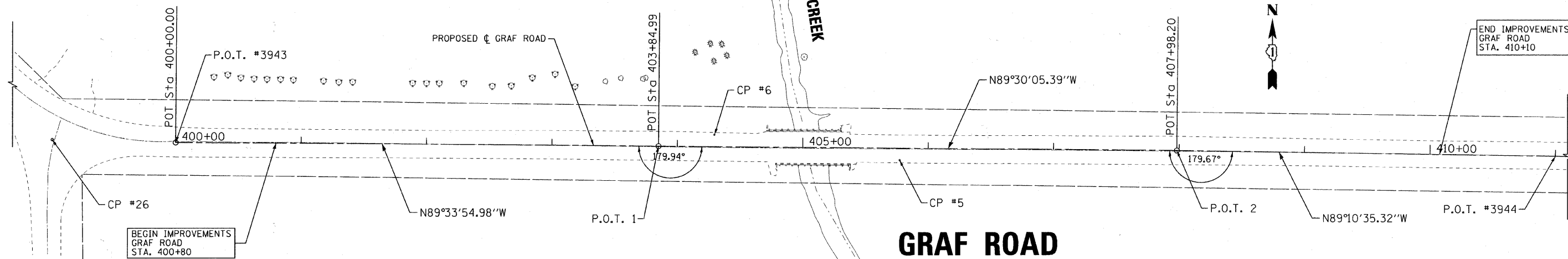
CP #5 - ELEV=887.38 PK NAIL SET IN HMA.
CP #6 - ELEV=888.19 PK NAIL SET IN HMA.
CP #26 - ELEV=890.15 PK NAIL SET IN HMA.

DATUM = NAVD88

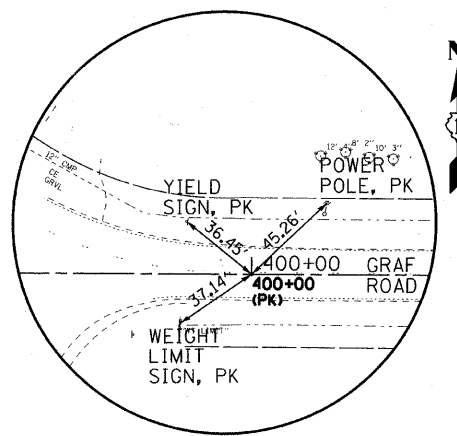
BRIDGE BENCHMARK:

SPIKE IN POWER POLE ON NORTH SIDE OF
GRAF ROAD APPROX - 180 FEET WEST OF
THE WEST BRIDGE ABUTMENT OVER PISCASAW CREEK

ELEV. = 885.41

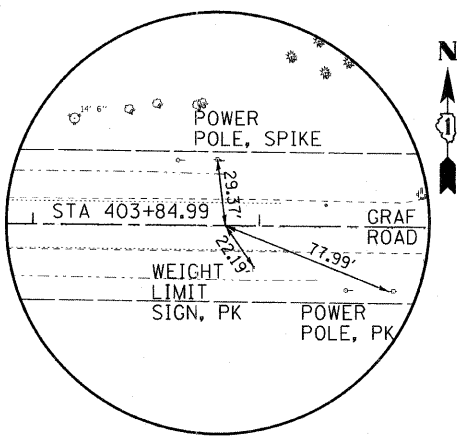


WHITE OAKS ROAD



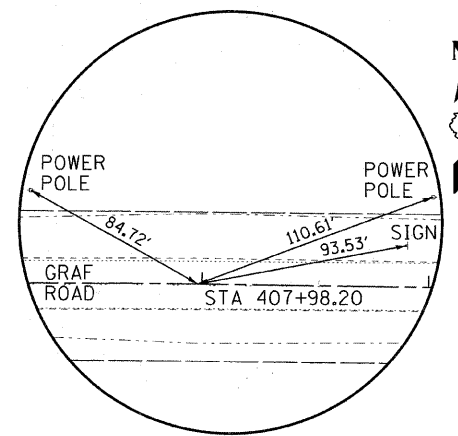
HORIZONTAL CONTROL

P.O.T. #3943 STA 400+00.00
GRAF ROAD
N 2104609.755, E 891451.967
ELEV 889.52



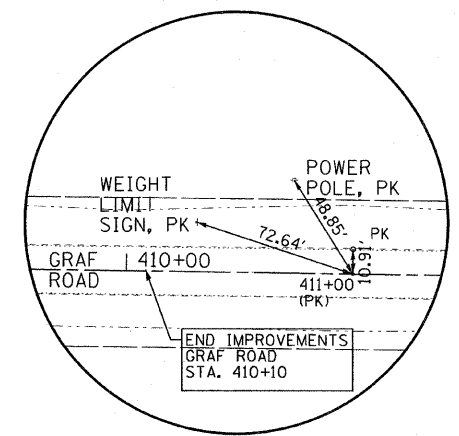
HORIZONTAL CONTROL

P.O.T. 1 STA 403+84.99
GRAF ROAD
N 2104606.834, E 891836.945



HORIZONTAL CONTROL

P.O.T. 1 STA 407+98.20
GRAF ROAD
N 2104603.239, E 892250.145



HORIZONTAL CONTROL

P.O.T. #3944 STA 411+00.00
GRAF ROAD
N 2104598.901, E 892551.910
ELEV 886.34

COPYRIGHT © 2011 BY BAXTER & WOODMAN, INC.
 ALL RIGHTS RESERVED. PROJECT NO. 06-00322-01-BR
 LICENSE NO. 184-00023 - EXPIRES 4/30/2013
 418CJC



DESIGNED - CAC	REVISED - 12/30/10 PER MCDOT
DRAWN - BCD	REVISED -
CHECKED - MDW	REVISED -
DATE - 10/08/10	FILE -

**MCHENRY COUNTY DIVISION OF TRANSPORTATION
GRAF ROAD BRIDGE OVER
WEST BRANCH PISCASAW CREEK**

ALIGNMENT, TIES & BENCHMARKS

SCALE: 1" = 50'

STA. TO STA.

TR. RTE.	SECTION	COUNTY	TOTAL SHEETS	SHEET NO.
0037	06-00322-01-BR	MCHENRY	52	10
C-91-258-11		CONTRACT NO. 63580		
FED. ROAD DIST. NO. 1		ILLINOIS FED. AID PROJECT		BR05-01110649