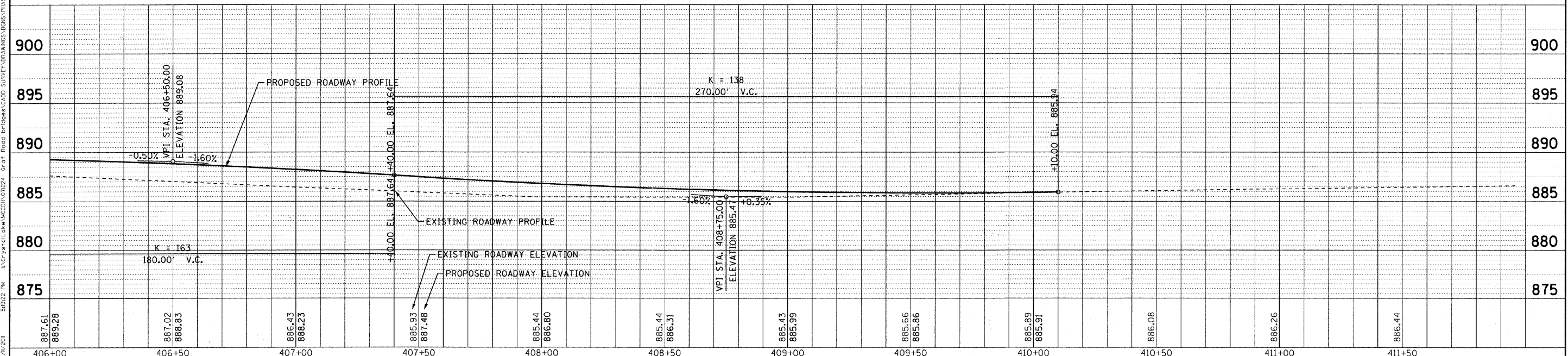


GRAF ROAD



COPYRIGHT © 2010 BY BAXTER & WOODMAN, INC.
 STATE OF ILLINOIS PROFESSIONAL DESIGN FIRM
 480 S. G. ...
 8/17/2010



DESIGNED - CAC	REVISED - 12/30/10 PER MCDOT
DRAWN - BCD	REVISED -
CHECKED - MDW	REVISED -
DATE - 10/08/10	FILE - 071224-Grav-West-PP2.sht

MCHENRY COUNTY DIVISION OF TRANSPORTATION
GRAF ROAD BRIDGE OVER
WEST BRANCH PISCASAW CREEK

PLAN & PROFILE
 SCALE: H: 1"=20' V: 1"=5'
 STA. 406+00 TO STA. 412+00

TR. RTE.	SECTION	COUNTY	TOTAL SHEETS	SHEET NO.
0037	06-00322-01-BR	MCHENRY	52	13
C-91-258-11		CONTRACT NO. 63580		
FED. ROAD DIST. NO. 1 ILLINOIS FED. AID PROJECT BR05-0001(683)				