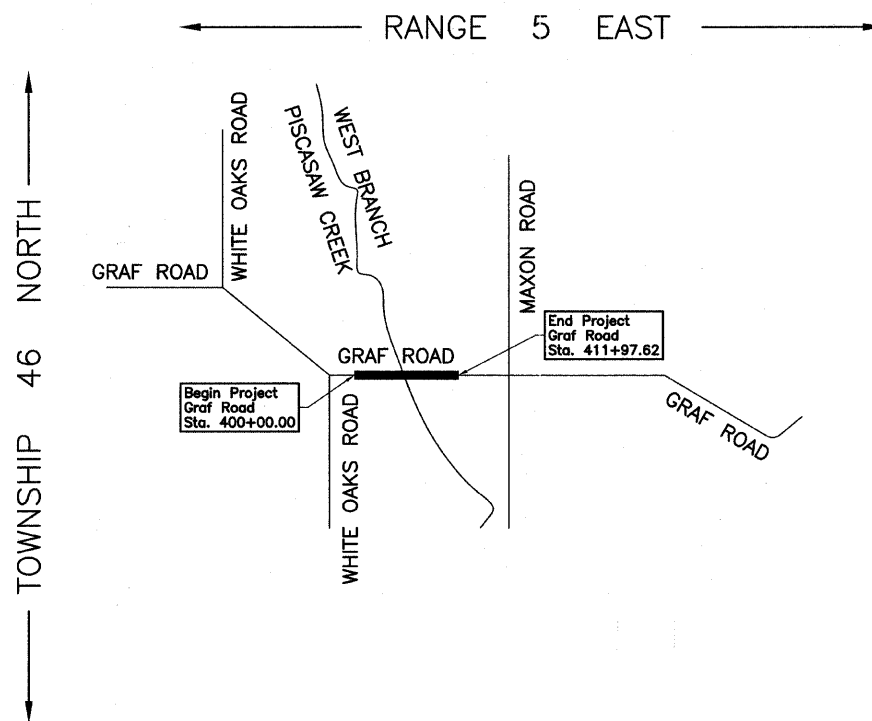
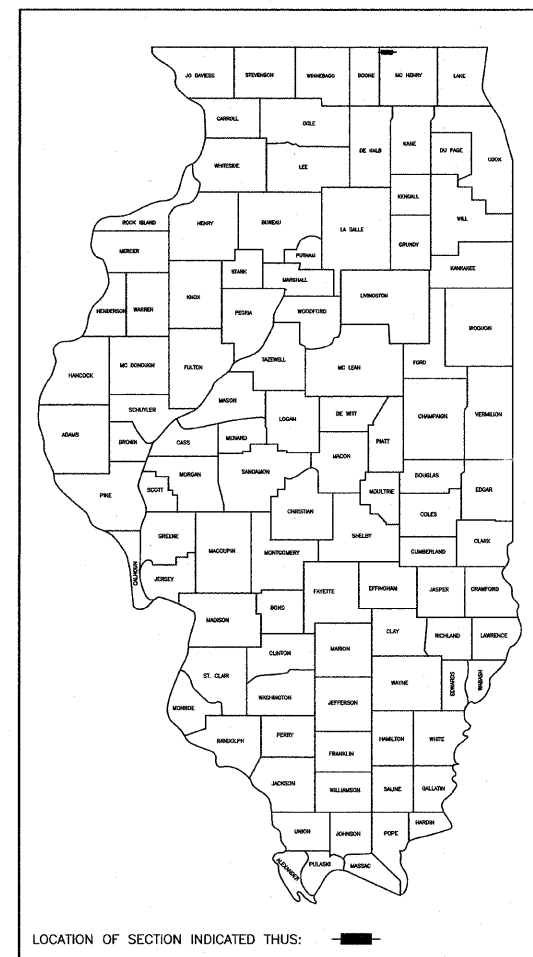


STATE OF ILLINOIS  
 DEPARTMENT OF TRANSPORTATION  
 RIGHT OF WAY PLANS  
 FOR PROPOSED  
 FEDERAL AID HIGHWAY

ROUTE: T.R. 37 (GRAF ROAD)  
 SECTION: 06-00322-01-BR  
 PROJECT NO.:  
 JOB NO.: R-55-001-97  
 COUNTY: McHENRY  
 LIMITS: @ WEST BRANCH PISCASAW CREEK

F.A. RTE.	SECTION	COUNTY	TOTAL SHEETS	SHEET NO.
0037	06-00322-01-BR	McHENRY	52	18
F.H.W.A. REG.		ILLINOIS PROJECT	BROS-0111(064)	



PROJECT LENGTH = 1,197.62 LIN. FT. = 0.227 MILE, GRAF ROAD

APPROVED \_\_\_\_\_ 20 \_\_\_\_\_  
 LOCAL AGENCY OFFICIAL

APPROVED \_\_\_\_\_ 20 \_\_\_\_\_  
 ENGINEER OF LAND ACQUISITION

APPROVED \_\_\_\_\_ 20 \_\_\_\_\_  
 ENGINEER OF LOCAL ROADS & STREETS

APPROVED \_\_\_\_\_ 20 \_\_\_\_\_  
 DISTRICT ENGINEER

STATE OF ILLINOIS  
 DEPARTMENT OF TRANSPORTATION