

GENERAL NOTES

Reinforcement bars shall conform to the requirements of ASTM A 706 Gr 60. See Special Provisions.

Layout of slope protection system may be varied to suit ground conditions in the field as directed by the Engineer.

Place reinforcement bars to provide 2 inch clear cover, unless noted otherwise.

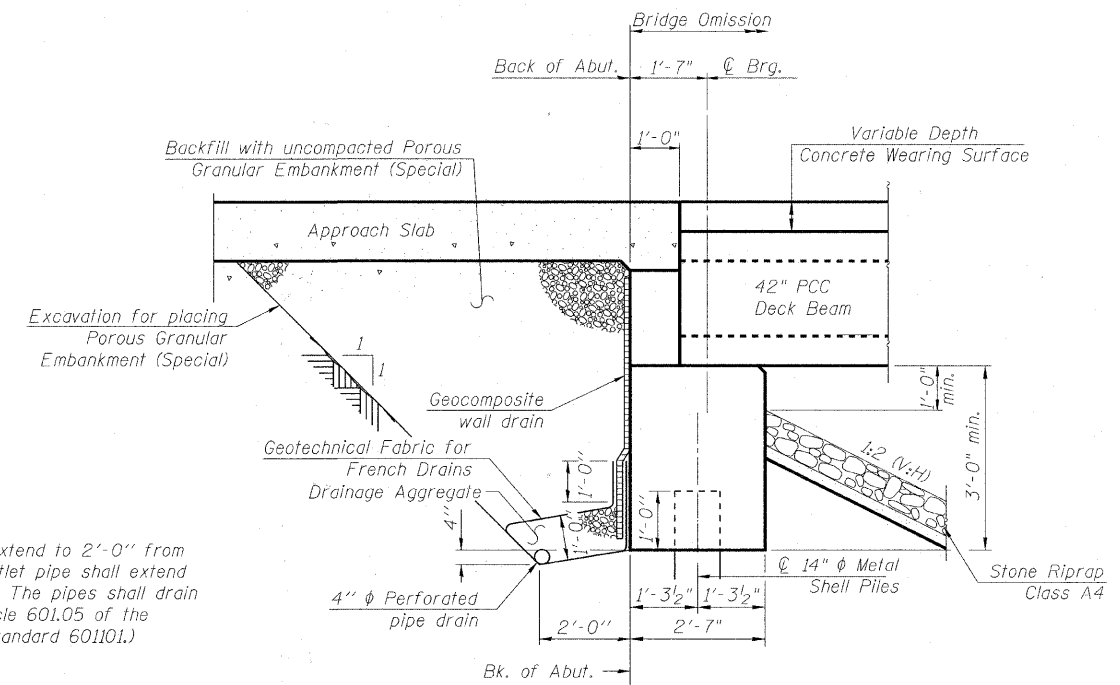
The Contractor is advised that the existing structure contains members that are in deteriorated condition with reduced load carrying capacity. It is the Contractor's responsibility to account for the condition of the existing structure when developing construction procedures for removal.

TOTAL BILL OF MATERIAL

ITEM	UNIT	SUPER	SUB	TOTAL
Porous Granular Embankment, Special	Cu. Yd.		118	118
Stone Riprap, Class A4	Sq. Yd.		576	576
Filter Fabric	Sq. Yd.		576	576
Removal of Existing Structures	Each		1	1
Structure Excavation	Cu. Yd.		240	240
Concrete Structures	Cu. Yd.		54.7	54.7
Concrete Superstructure	Cu. Yd.	108.4		108.4
Bridge Deck Grooving	Sq. Yd.	501		501
Protective Coat	Sq. Yd.	590		590
Reinforcement Bars, Epoxy Coated	Pound	32930	6620	39550
Steel Railing (Special)	Foot	231		231
Furnishing Metal Shell Piles 14" x 0.312"	Foot		880	880
Driving Piles	Foot		880	880
Test Pile Metal Shells	Each		2	2
Name Plates	Each		1	1
Geocomposite Wall Drain	Sq. Yd.		76	76
Pipe Underdrains for Structures 4"	Foot		143	143
Precast Prestressed Concrete Deck Beams (42" Depth)	Sq. Ft.	3075		3075
Concrete Wearing Surface (Variable Depth)	Cu. Yd.	65.3		65.3
Pile Shoes	Each		22	22

INDEX OF SHEETS

1	General Plan and Elevation
2	General Data
3	42"x48" PPC Deck Beam
4	42"x48" PPC Deck Beam Details
5	Superstructure
6	Superstructure Details
7-8	Bridge Approach Slab Details
9	Top of West Approach Slab Elevations
10	Top of East Approach Slab Elevations
11-12	Wyoming 2-Tube Bridge Railing Details
13	Abutments
14	Metal Shell Pile Details
15-18	Soil Borings



All drainage system components shall extend to 2'-0" from the end of each wingwall except an outlet pipe shall extend until intersecting with the side slopes. The pipes shall drain through concrete headwalls. (See Article 601.05 of the Standard Specifications and Highway Standard 601101.)

SECTION THRU ABUTMENT
(Horiz. dim. @ Rt. L's)

COPYRIGHT © 2010 BY BAXTER & WOODMAN, INC.
 STATE OF ILLINOIS - PROFESSIONAL DESIGN FIRM
 LICENSE NO. 18-0022720-0001
 EXP. DATE 06/30/15
 PROJECT NO. 06-00322-01-BR
 SHEET NO. 52 OF 52



USER NAME =	DESIGNED - BLB	REVISD - 12/30/10 PER MCDOT
PLOT SCALE =	CHECKED - BLB	REVISD -
PLOT DATE =	DRAWN - BCD	REVISD -
	DATE - 10/08/10	REVISD -

MCHENRY COUNTY DIVISION OF TRANSPORTATION
GRAF ROAD BRIDGE OVER
WEST BRANCH PISCASAW CREEK

GENERAL DATA
STRUCTURE NO. 056-3183
 SHEET NO. 2 OF 18 SHEETS

TR. RTE.	SECTION	COUNTY	TOTAL SHEETS	SHEET NO.
0037	06-00322-01-BR	MCHENRY	52	25
FED. ROAD DIST. NO. 1 ILLINOIS FED. AID PROJECT			CONTRACT NO. 63580	
			BROS-01110641	