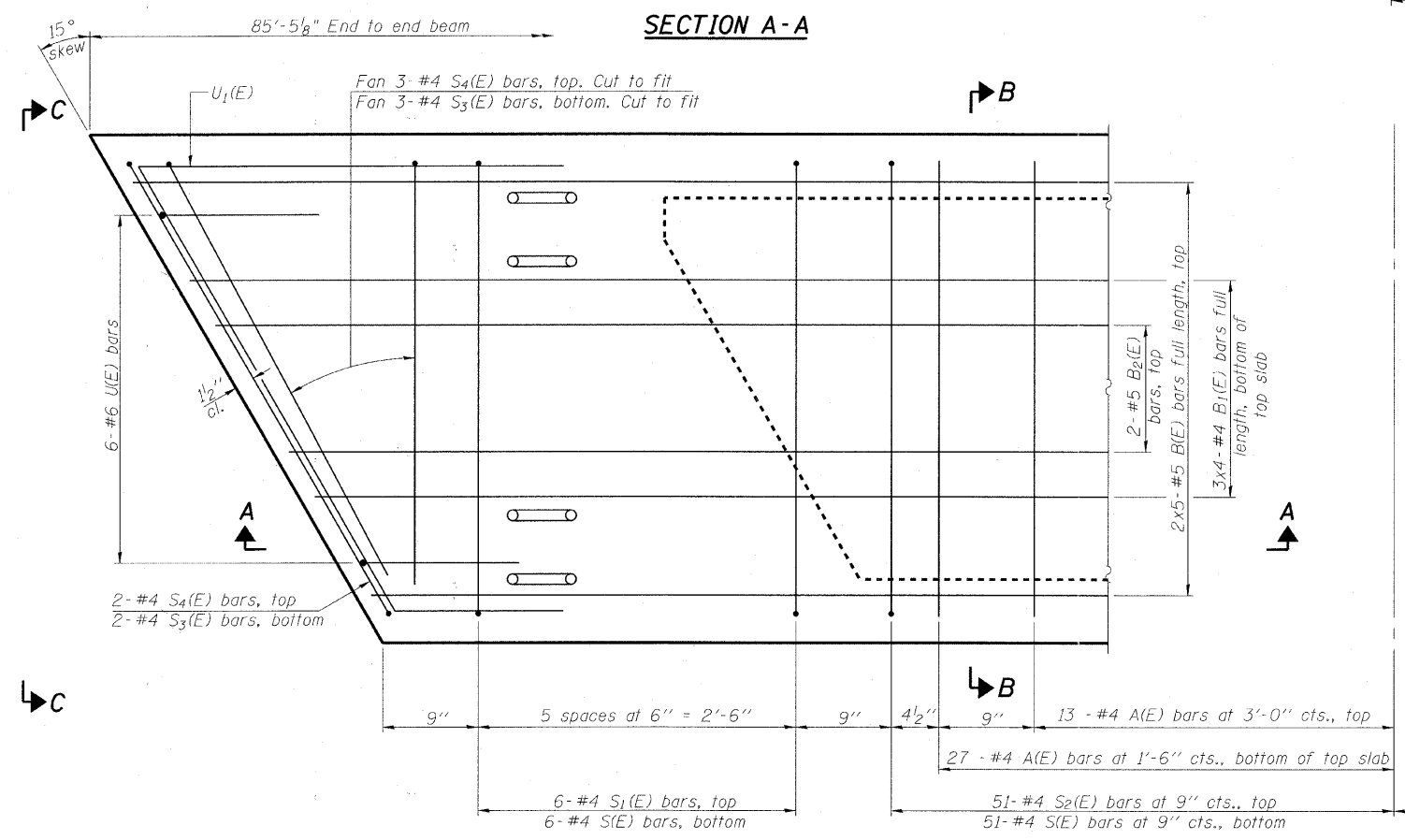
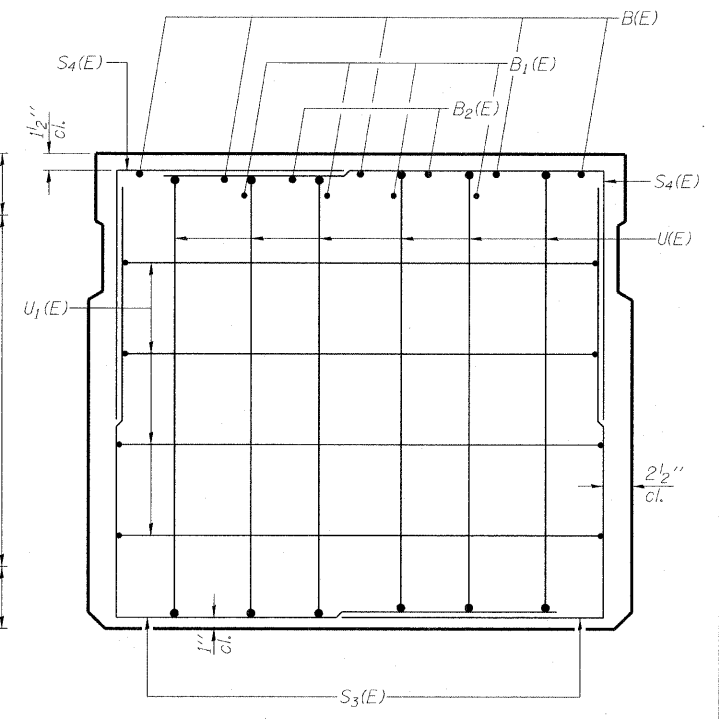
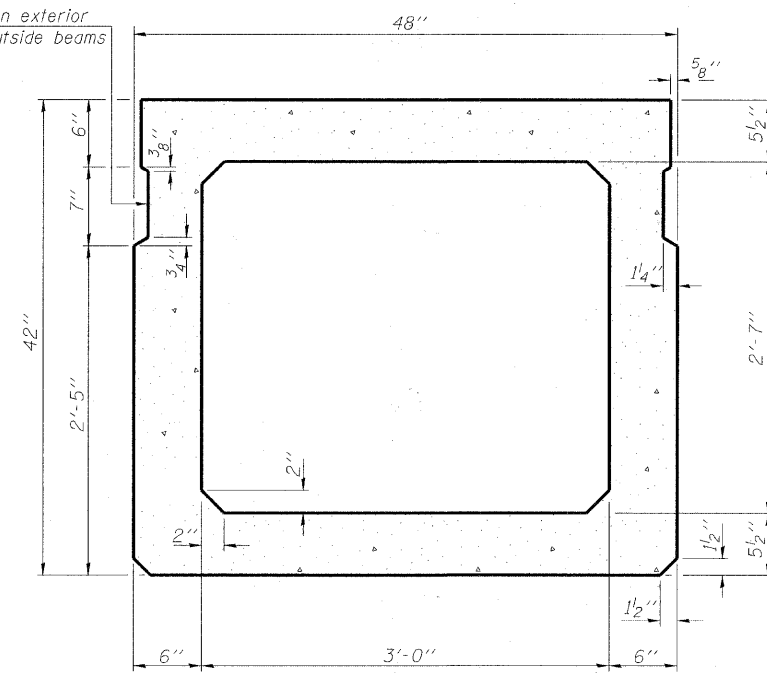


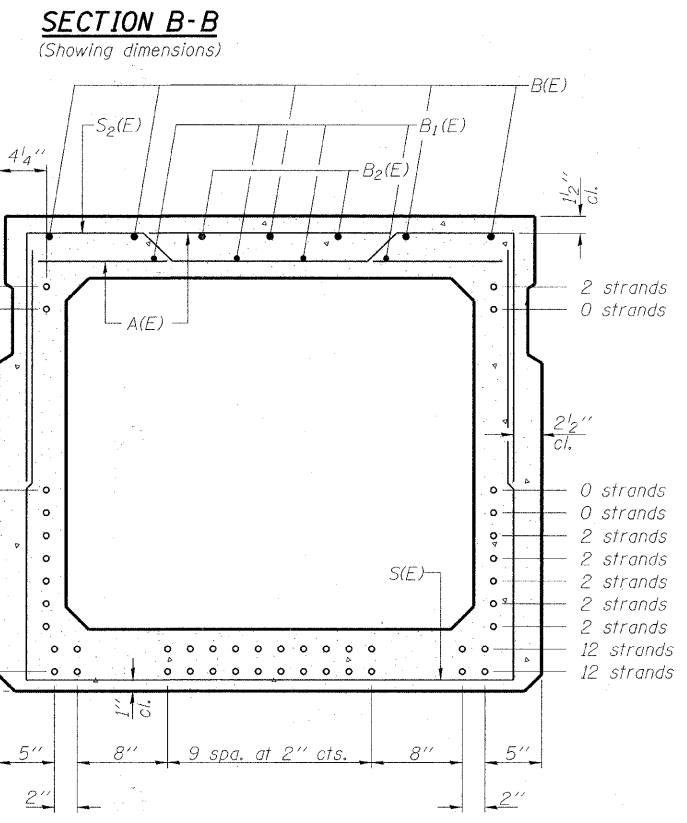
Omit key on exterior face of outside beams



**PLAN VIEW**

Note: Spacing of S(E) and S2(E) bars may be adjusted up to 4" in the immediate area of the transverse tie diaphragms to miss the block outs for the transverse ties.

**MINIMUM BAR LAP**  
 #4 bar = 2'-0"  
 #5 bar = 2'-6"



**SECTION B-B**

(Showing reinforcement and permissible strand locations)  
 Note: Place the number of strands specified in each row symmetrically about the centerline of beam in the permissible strand locations shown.

**VIEW C-C**

**BAR LIST**  
**ONE BEAM ONLY**  
 (For information only)

Bar	No.	Size	Length	Shape
A(E)	54	#4	3'-7"	—
B(E)	10	#5	43'-10"	—
B1(E)	12	#4	29'-9"	—
B2(E)	4	#5	10'-0"	—
S(E)	102	#4	9'-11"	┌
S1(E)	12	#4	7'-3"	┌
S2(E)	102	#4	7'-6"	┌
S3(E)	10	#4	6'-10"	┌
S4(E)	10	#4	5'-6"	┌
U(E)	12	#6	5'-9"	┌
U1(E)	8	#4	7'-10"	┌

Note: See sheet 4 of 18 for additional details and Bill of Material.

COPYRIGHT © 2008 BY BAXTER & WOODMAN, INC.  
 STATE OF ILLINOIS - PROFESSIONAL DESIGN FIRM  
 LICENSE NO. 184-00021 - EXPIRES 2/29/2011  
 PROJECT NO. 06-00322-01-BR  
 DRAWING NO. C-91-258-11



USER NAME =	DESIGNED - BLB	REVISED - 12/30/10 PER MCDOT
PLOT SCALE =	CHECKED - BAB	REVISED -
PLOT DATE =	DRAWN - BCD	REVISED -
	DATE - 10/08/10	REVISED -

**MCHENRY COUNTY DIVISION OF TRANSPORTATION**  
**GRAF ROAD BRIDGE OVER**  
**WEST BRANCH PISCASAW CREEK**

**42" x 48" PPC DECK BEAM**  
**STRUCTURE NO. 056-3183**  
 SHEET NO. 3 OF 18 SHEETS

TR. RTE.	SECTION	COUNTY	TOTAL SHEETS	SHEET NO.
0037	06-00322-01-BR	MCHENRY	52	26
C-91-258-11		CONTRACT NO. 63580		
FED. ROAD DIST. NO. 1		ILLINOIS FED. AID PROJECT		BROS-01110641