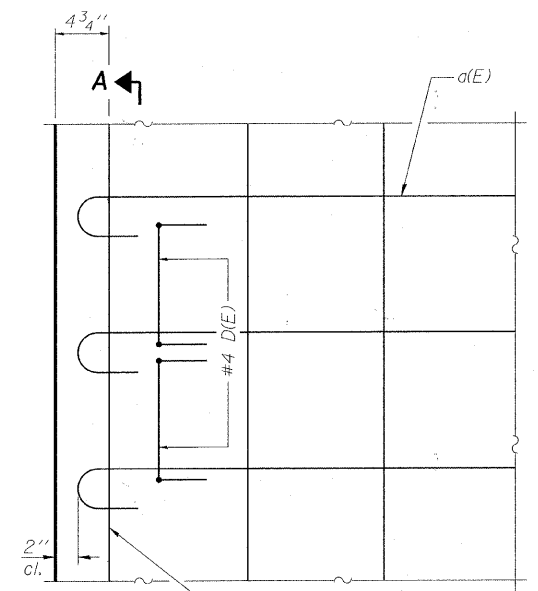
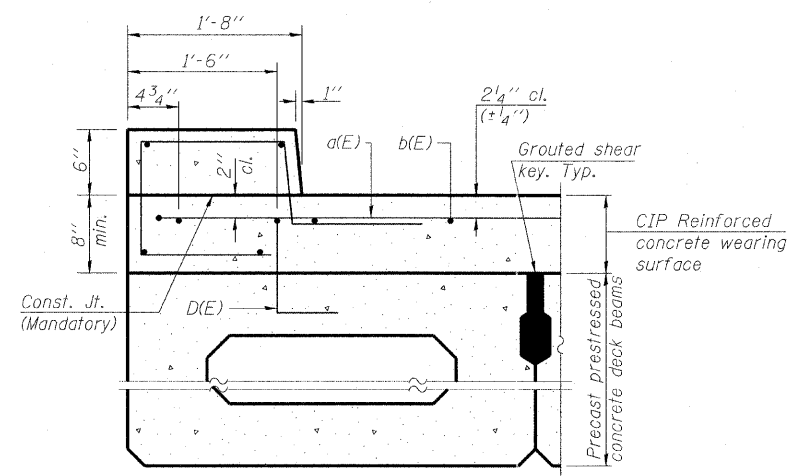


**CURB JOINT DETAILS**

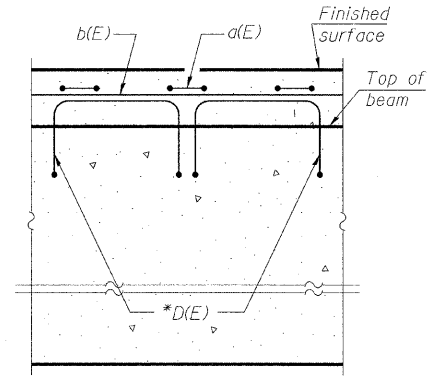


**PLAN**

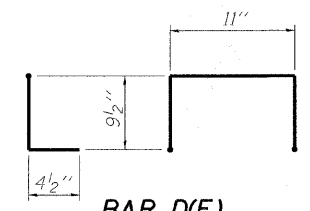
Notes:  
Formwork necessary for the wearing surface may be secured utilizing the bottom rail anchorage inserts and/or additional inserts cast into the beam.



**SECTION THRU FASCIA BEAM**

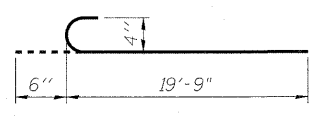


**SECTION A-A**



**BAR D(E)**

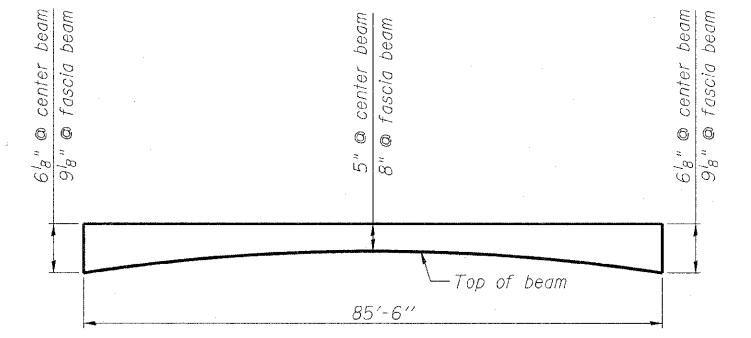
\* Place 2- #4 D(E) bars in beam at each post location as shown. D(E) bar included in cost of beam.



**BAR a(E)**

**MINIMUM BAR LAP**

#4 bar = 2'-7"  
#5 bar = 3'-3"



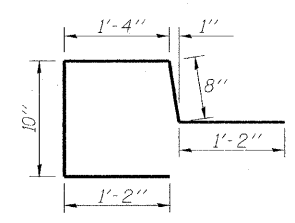
**ANTICIPATED CONCRETE WEARING SURFACE PROFILE**  
(For information only)

Estimated Final Beam Camber = 1 1/8"

**SUPERSTRUCTURE BILL OF MATERIAL**

Bar	No.	Size	Length	Shape
a(E)	172	#4	20'-3"	
b(E)	120	#4	30'-2"	
b <sub>1</sub> (E)	12	#5	30'-7"	
c(E)	216	#5	5'-2"	
Reinforcement Bars, Epoxy Coated			Pound	6300
Concrete Wearing Surface (Variable Depth)			Cu. Yd.	65.3
Concrete Superstructure			Cu. Yd.	5.4
Bridge Deck Grooving			Sq. Yd.	298
Protective Coat			Sq. Yd.	352

Bars indicated thus 20 x 2- #4 etc. indicates 20 lines of bars with 2 lengths per line.



**BAR c(E)**

COPYRIGHT © 2008 BY BAXTER & WOODMAN, INC.  
 STATE OF ILLINOIS - PROFESSIONAL DESIGN FIRM  
 LICENSE NO. - BE0022700  
 BAXTER & WOODMAN, INC. 60545 IL  
 11000 W. 110th St., Suite 200, Skokie, IL 60076-1100  
 www.baxterandwoodman.com



USER NAME =	DESIGNED - BLB	REVISED - 12/30/10 PER MCDOT
PLOT SCALE =	CHECKED - BAB	REVISED -
PLOT DATE =	DRAWN - BCD	REVISED -
	DATE - 10/08/10	REVISED -

**MCHENRY COUNTY DIVISION OF TRANSPORTATION**  
**GRAF ROAD BRIDGE OVER**  
**WEST BRANCH PISCASAW CREEK**

**SUPERSTRUCTURE DETAILS**  
**STRUCTURE NO. 056-3183**  
 SHEET NO. 6 OF 18 SHEETS

TR RTE.	SECTION	COUNTY	TOTAL SHEETS	SHEET NO.
0037	06-00322-01-BR	MCHENRY	52	29
C-91-258-11		CONTRACT NO. 63580		
FED. ROAD DIST. NO. 1		ILLINOIS FED. AID PROJECT		BR05-01110641