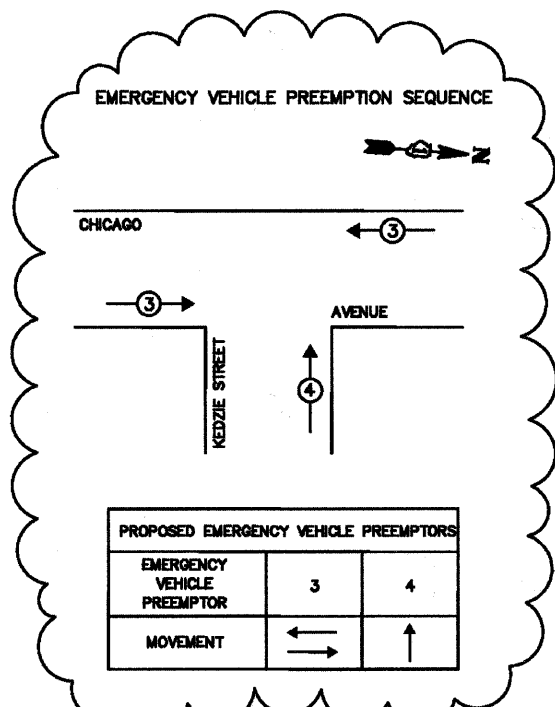


- LEGEND**
- ⊕ DUAL ENTRY PHASE
  - ⊖ PROTECTED LEFT TURN PHASE
  - ⊕ OL OVERLAP
  - ⊖ PEDESTRIAN PHASE
  - \* NUMBER REFERS TO ASSOCIATED PHASE

**PHASE DESIGNATION DIAGRAM**



PROPOSED EMERGENCY VEHICLE PREEMPTORS		
EMERGENCY VEHICLE PREEMPTOR	3	4
MOVEMENT	←	↑

I.D.O.T. TRAFFIC SIGNAL INSTALLATION ELECTRICAL SERVICE REQUIREMENTS					TOTAL WATTAGE
TYPE	NO. OF LAMPS	WATTAGE		% OPERATION	
SIGNAL (RED)	9	INCAND.	17	0.50	76.50
(YELLOW)	9	—	25	0.25	56.25
(GREEN)	9	—	15	0.25	33.75
ARROW	—	—	12	0.10	—
PED. SIGNAL	4	—	25	1.00	100.00
CONTROLLER	1	—	100	1.00	100.00
ILLUM. SIGN	—	—	25	0.05	—
FLASHER	—	—	—	0.50	—
ENERGY COSTS TO:					TOTAL = 366.50

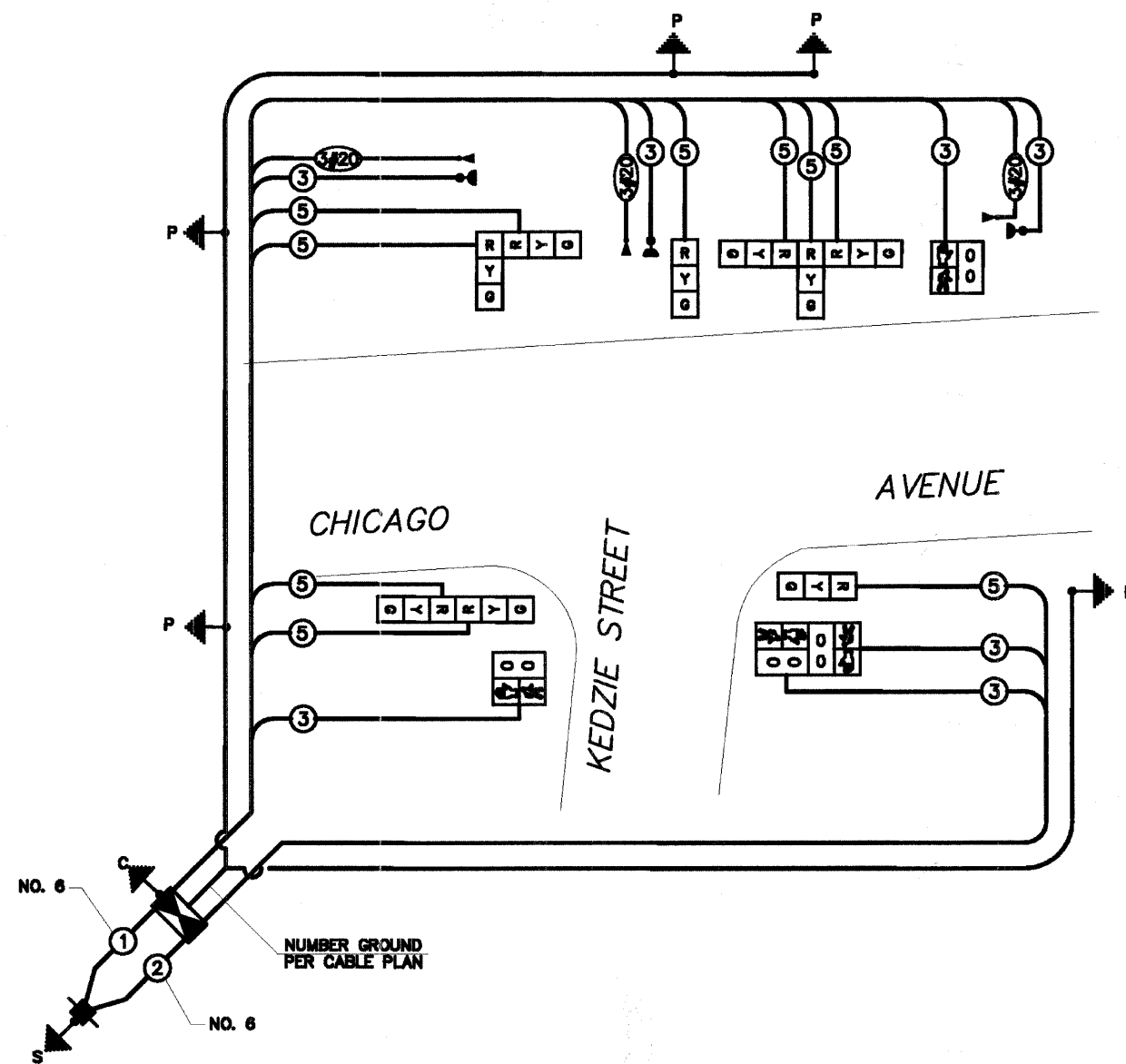
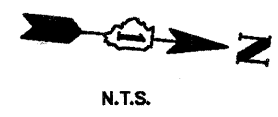
**CITY OF EVANSTON**  
 2100 RIDGE AVENUE  
 EVANSTON, ILLINOIS 60201-2798  
 ENERGY SUPPLY: CONTACT: LARRY SHANK  
 PHONE: (847) 818-5465  
 COMPANY: COMED

FOUNDATION (DEPTH)	FT. (m)	CABLE SLACK	FT. (m)	VERTICAL	FT. (m)
TYPE A - POST	4 (1.2)	HANDHOLE	6.5 (2.0)	ALL FOUNDATIONS	3.5 (1.0)
D - CONTROLLER	4 (1.2)	DOUBLE HANDHOLE	13 (4.0)	MAST ARM (L) POLE	20'+L-2'
E - M. ARM POLE	—	SIGNAL POST	2 (1.0)	(8m+L-0.6m)	—
24" (600mm)	10 (3.0)	CONTROLLER CAB.	1 (0.5)	BRACKET MOUNTED	13 (4.0)
30" (750mm)	15 (4.6)	FIBER OPTIC	13 (4.0)	PED. PUSHBUTTON	4 (1.2)
36" (900mm)	15 (4.6)	ELECTRIC SERVICE	1 (0.5)	ELECTRIC SERVICE	13.5 (4.1)
—	—	GROUND CABLE	1 (0.5)	SERVICE TO GROUND	13.5 (4.1)
—	—	—	—	POST MOUNTED	6 (1.8)

**NOTE:**  
 PEDESTRIAN PHASES 2 AND 8 SHALL BE ON RECALL.

**RESTORATION OF WORK AREA, RESTORATION OF THE TRAFFIC SIGNAL WORK AREA SHALL BE INCIDENTAL TO THE RELATED PAY ITEM SUCH AS FOUNDATION, CONDUIT, HANDHOLE, TRENCH AND BACKFILL, ETC., AND NO EXTRA COMPENSATION SHALL BE ALLOWED. ALL ROADWAY SURFACES SUCH AS SHOULDERS, MEDIANS, SIDEWALKS, PAVEMENT, ETC. SHALL BE REPLACED IN KIND. ALL DAMAGE TO MOWED LAWNS SHALL BE REPLACED WITH AN APPROVED SOG, AND ALL DAMAGE TO UNMOWED FIELDS SHALL BE SEEDING IN ACCORDANCE WITH STANDARD SPECIFICATIONS 252 AND 250 RESPECTIVELY.**

**NOTE:**  
 THE TRAFFIC SIGNAL CONTROLLER EQUIPMENT FOR THIS PROJECT SHALL BE "EAGLE" TO MATCH THE EXISTING ADJACENT SYSTEM.



- CABLE PLAN LEGEND**
- |  |   |
|--|---|
|  | 6" (200mm) TRAFFIC SIGNAL SECTION   |
|  | 12" (300mm) TRAFFIC SIGNAL SECTION  |
|  | 12" (300mm) PEDESTRIAN SIGNAL SECTION   |
|  | CONTROLLER CABINET  |
|  | SERVICE INSTALLATION  |
|  | TELEPHONE INSTALLATION  |
|  | VEHICLE DETECTOR, INDUCTION LOOP  |
|  | MAGNETIC DETECTOR   |
|  | EMERGENCY VEHICLE LIGHT DETECTOR  |
|  | CONFIRMATION BEACON   |
|  | PUSHBUTTON DETECTOR   |
|  | DENOTES NUMBER OF CONDUCTORS. ALL CABLE NO. 14 EXCEPT AS INDICATED. ALL LOOP DETECTOR CABLE TO BE SHIELDED. |
|  | GROUND CABLE IN CONDUIT NO. 8 SOLID COPPER (GREEN)  |
|  | FIBER OPTIC CABLE IN CONDUIT NO. 62.5/125 2-MM12F SM12F   |
|  | SIGNAL FACE WITH BACKPLATE. "P" INDICATES PROGRAMMED HEAD.  |
|  | RAILROAD CONTROL CABINET  |
|  | ILLUMINATED SIGN "NO LEFT TURN"   |
|  | ILLUMINATED SIGN "NO RIGHT TURN"  |
|  | GROUND ROD AT HANDHOLE (H), DOUBLE HANDHOLE (H), OR CONTROLLER (C)  |
|  | GROUND ROD AT POST (P) OR MAST ARM POLE (MA)  |
|  | GROUND ROD AT ELECTRIC SERVICE INSTALLATION   |

ITEM DESCRIPTION	UNIT	QTY
CONDUIT IN TRENCH, 1/2" DIA., GALVANIZED STEEL	FOOT	38
TRENCH AND BACKFILL FOR ELECTRICAL WORK	FOOT	38
ELECTRIC CABLE IN CONDUIT, SIGNAL NO. 14 3C	FOOT	737
ELECTRIC CABLE IN CONDUIT, SIGNAL NO. 14 5C	FOOT	861
ELECTRIC CABLE IN CONDUIT, EQUIPMENT GROUNDING CONDUCTOR NO. 8 1C	FOOT	333
CONCRETE FOUNDATION, TYPE A	FOOT	12
DRILL EXISTING HANDHOLE	EACH	1
PEDESTRIAN SIGNAL HEAD, LED, 1-FACE, BRACKET MOUNTED WITH COUNTDOWN TIMER	EACH	2
RELOCATE EXISTING TRAFFIC SIGNAL POST	EACH	3
MODIFY EXISTING CONTROLLER	EACH	1
REMOVE ELECTRIC CABLE FROM CONDUIT	FOOT	1,949
REMOVE AND REINSTALL ELECTRIC CABLE FROM CONDUIT	FOOT	906
REMOVE EXISTING CONCRETE FOUNDATION	EACH	3
CONDUIT SPLICE	EACH	2
HANDHOLE TO BE ADJUSTED	EACH	2
ELECTRIC CABLE IN CONDUIT NO. 20 3/C, TWISTED, SHIELDED	FOOT	333

**SUMMARY OF QUANTITIES, CABLE PLAN, PHASE DESIGNATION DIAGRAM AND EMERGENCY VEHICLE PREEMPTION SEQUENCE**  
 CHICAGO AVENUE AT KEDZIE STREET