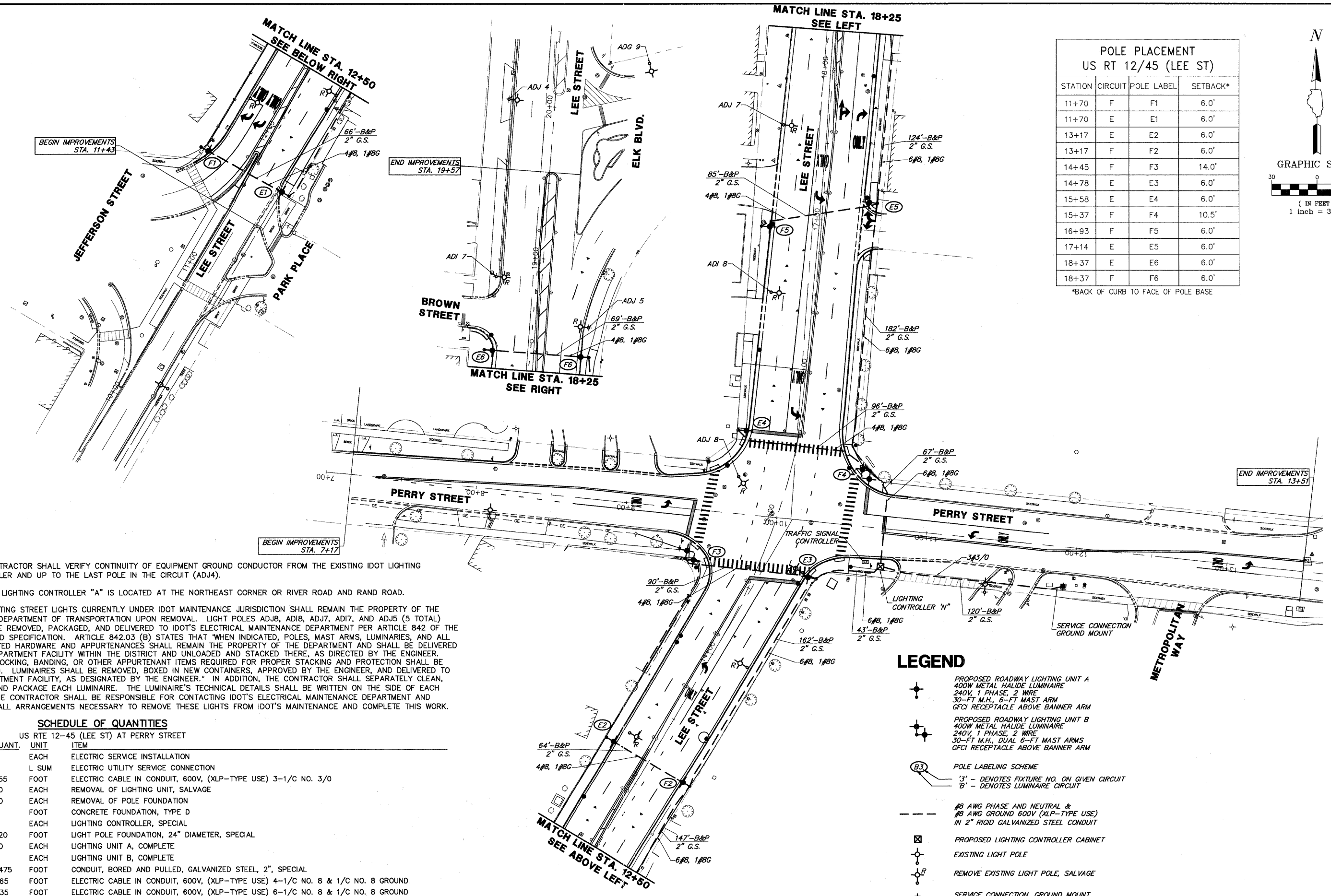


POLE PLACEMENT US RT 12/45 (LEE ST)			
STATION	CIRCUIT	POLE LABEL	SETBACK*
11+70	F	F1	6.0'
11+70	E	E1	6.0'
13+17	E	E2	6.0'
13+17	F	F2	6.0'
14+45	F	F3	14.0'
14+78	E	E3	6.0'
15+58	E	E4	6.0'
15+37	F	F4	10.5'
16+93	F	F5	6.0'
17+14	E	E5	6.0'
18+37	E	E6	6.0'
18+37	F	F6	6.0'

\*BACK OF CURB TO FACE OF POLE BASE



**NOTES:**  
 THE CONTRACTOR SHALL VERIFY CONTINUITY OF EQUIPMENT GROUND CONDUCTOR FROM THE EXISTING IDOT LIGHTING CONTROLLER AND UP TO THE LAST POLE IN THE CIRCUIT (ADJ4).  
 EXISTING LIGHTING CONTROLLER "A" IS LOCATED AT THE NORTHEAST CORNER OF RIVER ROAD AND RAND ROAD.

THE EXISTING STREET LIGHTS CURRENTLY UNDER IDOT MAINTENANCE JURISDICTION SHALL REMAIN THE PROPERTY OF THE ILLINOIS DEPARTMENT OF TRANSPORTATION UPON REMOVAL. LIGHT POLES ADJ8, ADJ8, ADJ7, ADI7, AND ADJ5 (5 TOTAL) SHALL BE REMOVED, PACKAGED, AND DELIVERED TO IDOT'S ELECTRICAL MAINTENANCE DEPARTMENT PER ARTICLE 842 OF THE STANDARD SPECIFICATION. ARTICLE 842.03 (B) STATES THAT "WHEN INDICATED, POLES, MAST ARMS, LUMINAIRES, AND ALL ASSOCIATED HARDWARE AND APPURTENANCES SHALL REMAIN THE PROPERTY OF THE DEPARTMENT AND SHALL BE DELIVERED TO A DEPARTMENT FACILITY WITHIN THE DISTRICT AND UNLOADED AND STACKED THERE, AS DIRECTED BY THE ENGINEER. WOOD BLOCKING, BANDING, OR OTHER APPURTENANT ITEMS REQUIRED FOR PROPER STACKING AND PROTECTION SHALL BE INCLUDED. LUMINAIRES SHALL BE REMOVED, BOXED IN NEW CONTAINERS, APPROVED BY THE ENGINEER, AND DELIVERED TO A DEPARTMENT FACILITY, AS DESIGNATED BY THE ENGINEER." IN ADDITION, THE CONTRACTOR SHALL SEPARATELY CLEAN, WRAP, AND PACKAGE EACH LUMINAIRE. THE LUMINAIRE'S TECHNICAL DETAILS SHALL BE WRITTEN ON THE SIDE OF EACH BOX. THE CONTRACTOR SHALL BE RESPONSIBLE FOR CONTACTING IDOT'S ELECTRICAL MAINTENANCE DEPARTMENT AND MAKING ALL ARRANGEMENTS NECESSARY TO REMOVE THESE LIGHTS FROM IDOT'S MAINTENANCE AND COMPLETE THIS WORK.

**SCHEDULE OF QUANTITIES**

US RTE 12-45 (LEE ST) AT PERRY STREET		
QUANT.	UNIT	ITEM
1.	1	EACH ELECTRIC SERVICE INSTALLATION
2.	1	L SUM ELECTRIC UTILITY SERVICE CONNECTION
3.	155	FOOT ELECTRIC CABLE IN CONDUIT, 600V, (XLP-TYPE USE) 3-1/C NO. 3/0
4.	10	EACH REMOVAL OF LIGHTING UNIT, SALVAGE
5.	10	EACH REMOVAL OF POLE FOUNDATION
6.	4	FOOT CONCRETE FOUNDATION, TYPE D
7.	1	EACH LIGHTING CONTROLLER, SPECIAL
8.	120	FOOT LIGHT POLE FOUNDATION, 24" DIAMETER, SPECIAL
9.	10	EACH LIGHTING UNIT A, COMPLETE
10.	2	EACH LIGHTING UNIT B, COMPLETE
11.	1475	FOOT CONDUIT, BORED AND PULLED, GALVANIZED STEEL, 2", SPECIAL
12.	565	FOOT ELECTRIC CABLE IN CONDUIT, 600V, (XLP-TYPE USE) 4-1/C NO. 8 & 1/C NO. 8 GROUND.
13.	835	FOOT ELECTRIC CABLE IN CONDUIT, 600V, (XLP-TYPE USE) 6-1/C NO. 8 & 1/C NO. 8 GROUND

**LEGEND**

- PROPOSED ROADWAY LIGHTING UNIT A  
400W METAL HALIDE LUMINAIRE  
240V, 1 PHASE, 2 WIRE  
30'-FT M.H., 6'-FT MAST ARM  
GFCI RECEPTACLE ABOVE BANNER ARM
- PROPOSED ROADWAY LIGHTING UNIT B  
400W METAL HALIDE LUMINAIRE  
240V, 1 PHASE, 2 WIRE  
30'-FT M.H., DUAL 6'-FT MAST ARMS  
GFCI RECEPTACLE ABOVE BANNER ARM
- POLE LABELING SCHEME  
'3' - DENOTES FIXTURE NO. ON GIVEN CIRCUIT  
'B' - DENOTES LUMINAIRE CIRCUIT
- PROPOSED LIGHTING CONTROLLER CABINET
- EXISTING LIGHT POLE
- REMOVE EXISTING LIGHT POLE, SALVAGE
- SERVICE CONNECTION, GROUND MOUNT.  
120/240/1 PHASE/3 WIRE