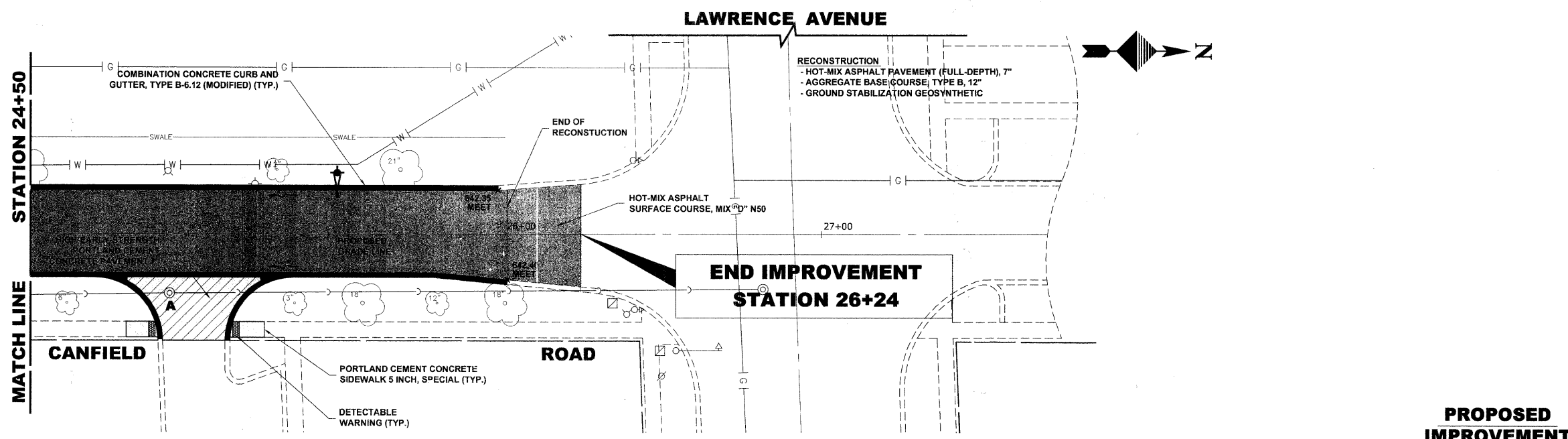


**EXISTING TOPOGRAPHY**



**PROPOSED IMPROVEMENT**

STA.	EXIST. CL.	PROF. CL.	DESCRIPTION	PROF. E.P.	PROPOSED GRADE LINE	EXISTING GRADE LINE	STA.
644							644
642					0.60%	0.55%	642
640				641.00 (W) 641.15 (E)	0.90%		640
638				641.40 (W) B/G 641.45 (E) B/G	1.00%		638
636	641.74 641.55			642.30 (W) B/G 641.85 (E) B/G		MEET 642.35 (W) 642.40 (E)	636

NOTE:  
ALL CURB AND GUTTER TO BE  
6" UNLESS OTHERWISE NOTED.

**HANCOCK ENGINEERING**  
 ♦ Civil Engineers  
 ♦ Municipal Consultants  
 ♦ Established 1911  
 9933 Roosevelt Road  
 Wheelchester, Illinois 60154-2780  
 Phone: 708.865-0300  
 Fax: 708.865-1212

DESIGNED -	CB	REVISED -	
DRAWN -	LEV, DMM	REVISED -	
CHECKED -	JGG	REVISED -	
DATE -	7-1-2011	REVISED -	

**STATE OF ILLINOIS  
DEPARTMENT OF TRANSPORTATION**

**PAVING PLAN**  
 SCALE: 1"=20'H./2V. SHEET NO. 6 OF 6 SHEETS STA. 24+50 TO STA. (END)

F.A.U. RTE.	SECTION	COUNTY	TOTAL SHEETS NO.
2783	10-00061-00-RS	COOK	41 13
FIELD BOOK NO. 1552		CONTRACT NO. 63631	
FED. ROAD DIST. NO. 1	ILLINOIS	FED. AID PROJECT	

Drawing file: W:\Projects\61210209 - Canfield Road Recon\Canfield\Canfield\_Rd\_Recon.dwg Aug 11, 2011 - 2:10pm