

GENERAL NOTES

DEPRESSED CURBS - THE TOP OF CURBS SHALL BE DEPRESSED WHERE THE CURB AND GUTTER IS CONSTRUCTED AT HANDICAP ACCESSIBLE SIDEWALK RAMP AT ALLEY RETURNS AND STREET INTERSECTIONS, AND FOR PRIVATE DRIVES AND AS DIRECTED BY THE ENGINEER

DRAINAGE OPENINGS - AT ALL LOCATIONS WHERE CASTINGS ARE TO BE INCORPORATED IN THE CURB AND GUTTER, A 3/4" EXPANSION JOINT SHALL BE INSTALLED IN THE CURB AND GUTTER A DISTANCE OF 5 FT. FROM EACH SIDE OF THE CASTING. 2-NO. 4 RE-BARS, 9' IN LENGTH, SHALL BE INCORPORATED IN THE CONTINUOUS PORTION OF CONCRETE CURB BEHIND THE CASTING.

SLIPFORM CONSTRUCTION - VERTICAL FACES MAY BE BATTERED AT THE RATE OF 3/4" PER FOOT OF HEIGHT TO AID IN SLIPFORM OPERATIONS.

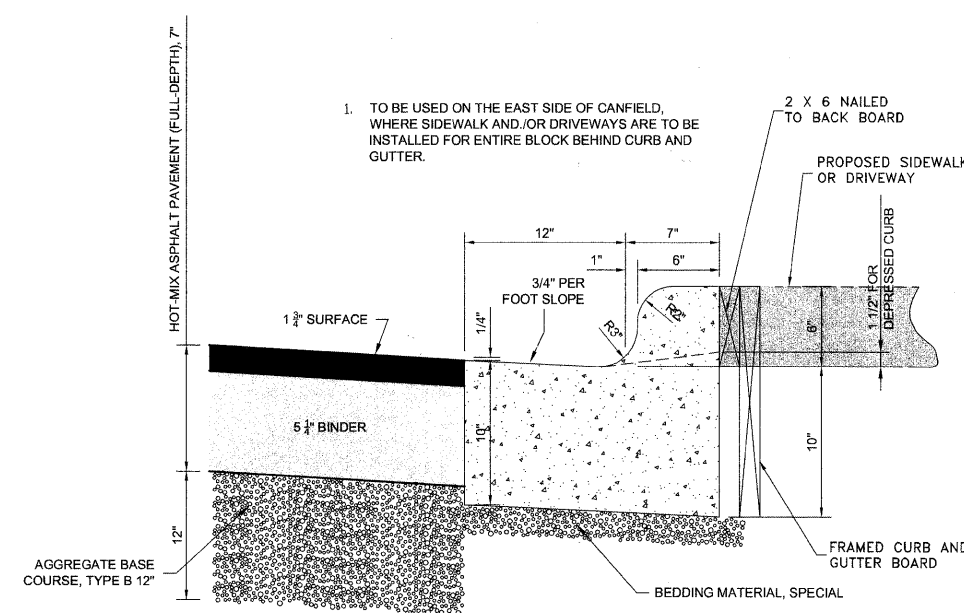
DEPRESSED CURB HEIGHT - THE HEIGHT OF THE DEPRESSED CURB SHALL BE 1-1/2" AT DRIVEWAYS. SEE IDOT STANDARD 424001-04 FOR HEIGHT AT SIDEWALK RAMP.

BITUMINOUS EXPANSION JOINTS - THREE QUARTER INCH (3/4") BITUMINOUS PREMOLDED INORGANIC FIBER EXPANSION JOINTS SHALL BE INSTALLED WHERE NEW SIDEWALK OR CURB AND GUTTER OR DRIVEWAY PAVEMENT ABUTS AN EXISTING CONCRETE WALK, DRIVE, OR CURB WHICH IS TO REMAIN IN PLACE, AND AT NOT LESS THAN NINETY FOOT (90') INTERVALS AT LOCATIONS WHERE CURB REPLACEMENT IS IN EXCESS OF NINETY FEET (90'); AT RADIUS POINTS, AT BOTH SIDES OF FRAMES AND GRATES WHICH FALL IN THE CURB, AND AS DIRECTED BY THE ENGINEER.

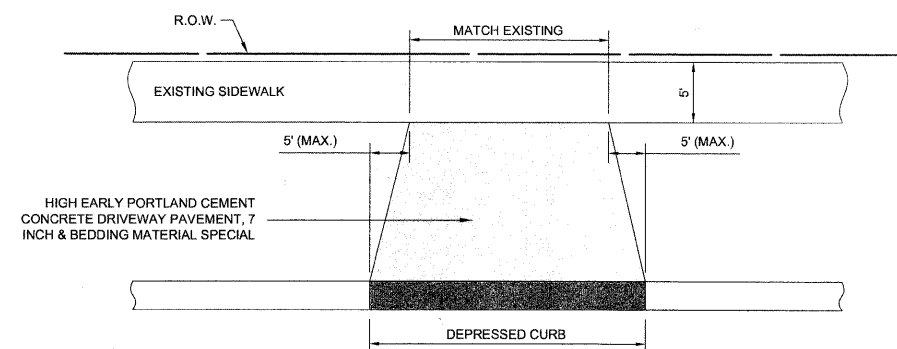
ALL EXPANSION JOINTS LOCATED IN THE CURB AND GUTTER SHALL HAVE TWO (2) THREE QUARTER INCH (3/4") DIAMETER, SMOOTH, ROUND, EPOXY COATED DOWEL BARS, EIGHTEEN INCHES (18") IN LENGTH, WITH GREASED PLASTIC END CAPS INSERTED TO ALLOW THE CURB AND GUTTER TO EXPAND AND CONTRACT LATERALLY. CONTRACTION JOINTS SHALL BE TOoled INTO THE CURB AND GUTTER AT INTERVALS NOT TO EXCEED FIFTEEN FEET (15'). THESE CONTRACTION JOINTS SHALL BE SAW CUT TO A DEPTH OF TWO INCHES (2") WITHIN TWENTY-FOUR (24) HOURS OF CONCRETE PLACEMENT. THE COST OF THE ABOVE WORK SHALL BE INCLUDED IN THE RESPECTIVE ITEMS FOR CONCRETE INSTALLATION.

CURB AND GUTTER REMOVAL

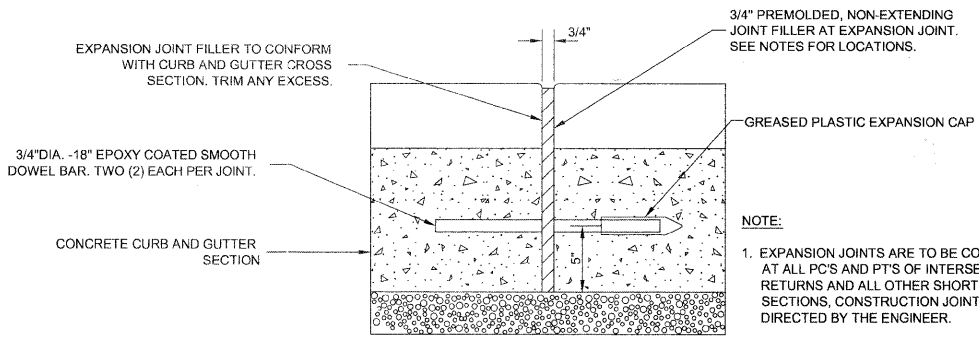
THE COSTS FOR REMOVAL OF ANY ASPHALT OVERLAY THAT EXTENDS INTO THE GUTTER PORTION OF THE CURB AND GUTTER WILL BE INCLUDED IN THE PRICE FOR COMBINATION CURB AND GUTTER REMOVAL.



**COMBINATION CONCRETE CURB & GUTTER
TYPE B-6.12 (SPECIAL)**

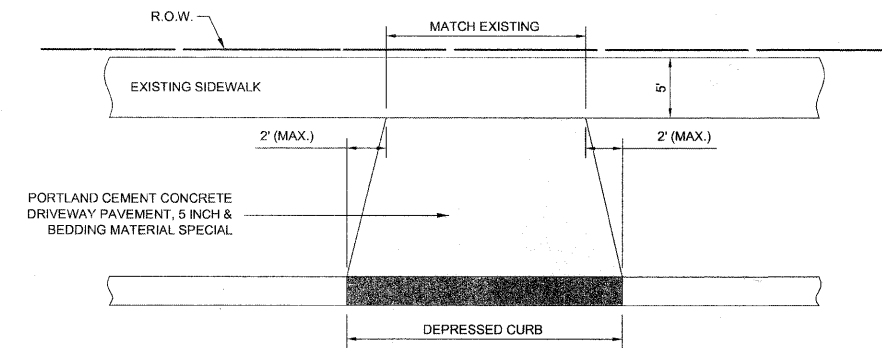


**TYPICAL CURB AND GUTTER
EXPANSION JOINT**

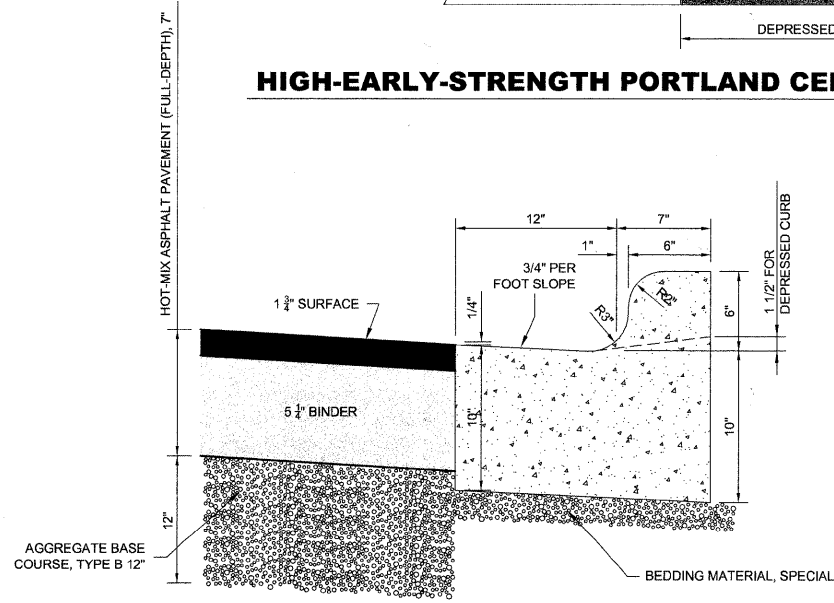


NOTE:
1. EXPANSION JOINTS ARE TO BE CONSTRUCTED AT ALL PC'S AND PTS OF INTERSECTION RETURNS AND ALL OTHER SHORT RADIUS SECTIONS. CONSTRUCTION JOINTS & AS DIRECTED BY THE ENGINEER.

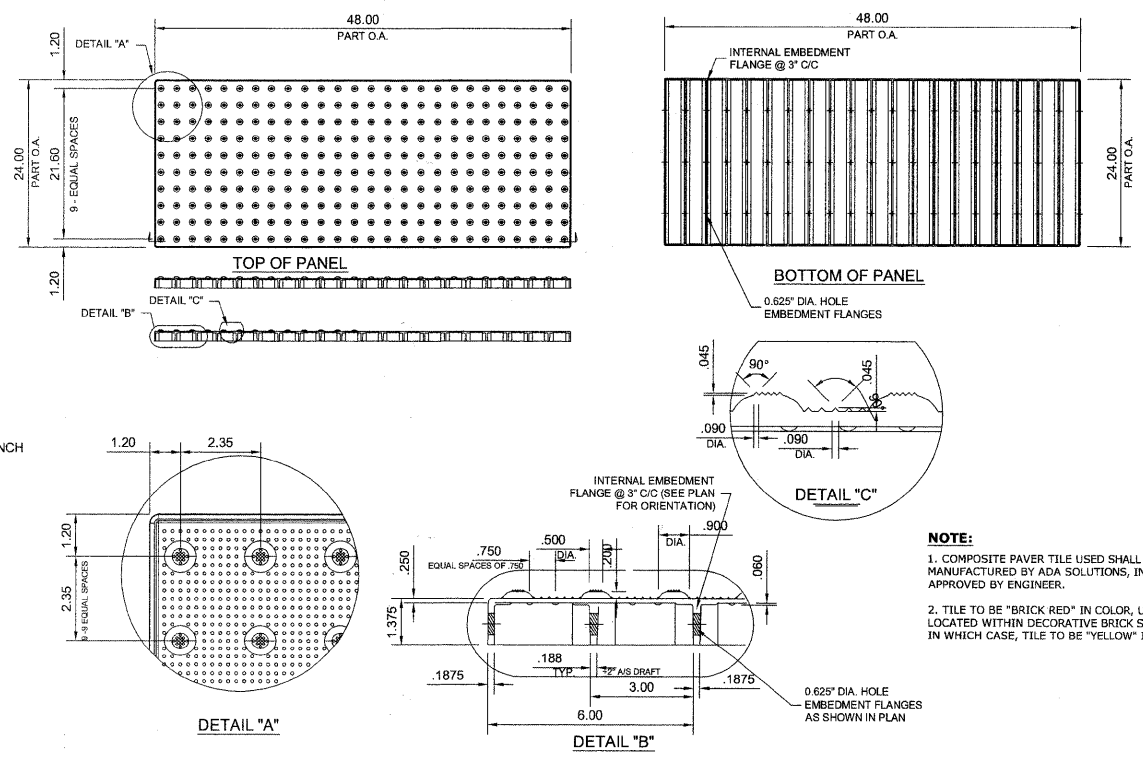
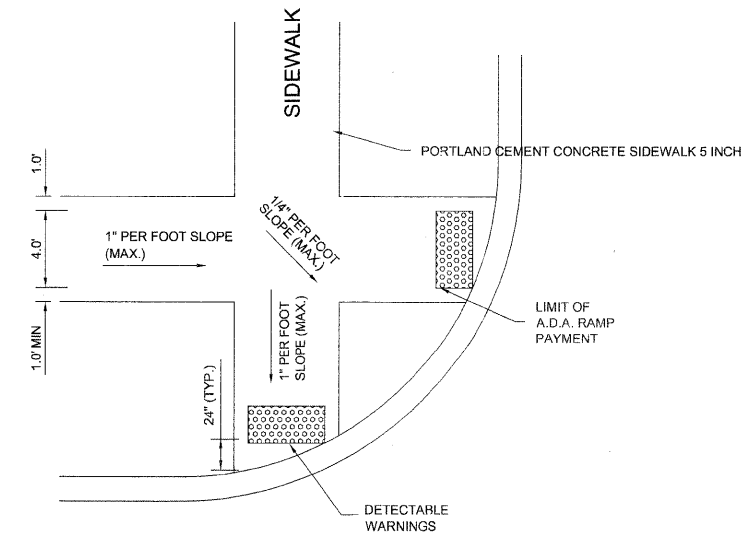
RESIDENTIAL DRIVEWAY DETAIL



HIGH-EARLY-STRENGTH PORTLAND CEMENT CONCRETE PAVEMENT 7" (TYP.)



**COMBINATION CONCRETE CURB & GUTTER
TYPE B-6.12 (MODIFIED)**



**CAST-IN-PLACE COMPOSITE PAVER TILE
FOR DETECTABLE WARNING**

Drawing file: W:\Projects\61210209 - Canfield Road Reson\B_RoadwayDetails-CanfieldRd.dwg Aug 11, 2011 - 2:11pm

HANCOCK ENGINEERING
 Civil Engineers
 Municipal Consultants
 Established 1911
 9933 Roosevelt Road
 Wheaton, Illinois 60154-2780
 Phone: 708-865-4300
 Fax: 708-865-1212

DESIGNED - CB	REVISED -
DRAWN - LEV, DMM	REVISED -
CHECKED - JGG	REVISED -
DATE - 7-1-2011	REVISED -

**STATE OF ILLINOIS
DEPARTMENT OF TRANSPORTATION**

ROADWAY DETAILS

SCALE: NONE SHEET NO. 1 OF 1 SHEETS STA. TO STA.

F.A.U. RTE.	SECTION	COUNTY	TOTAL SHEETS	SHEET NO.
2763	10-00061-00-RS	COOK	41	14
FIELD BOOK NO. 1652		CONTRACT NO. 63631		
FED. ROAD DIST. NO. 1		ILLINOIS	FED. AID PROJECT	

E.H.E. PROJECT NO. 612-10-20901