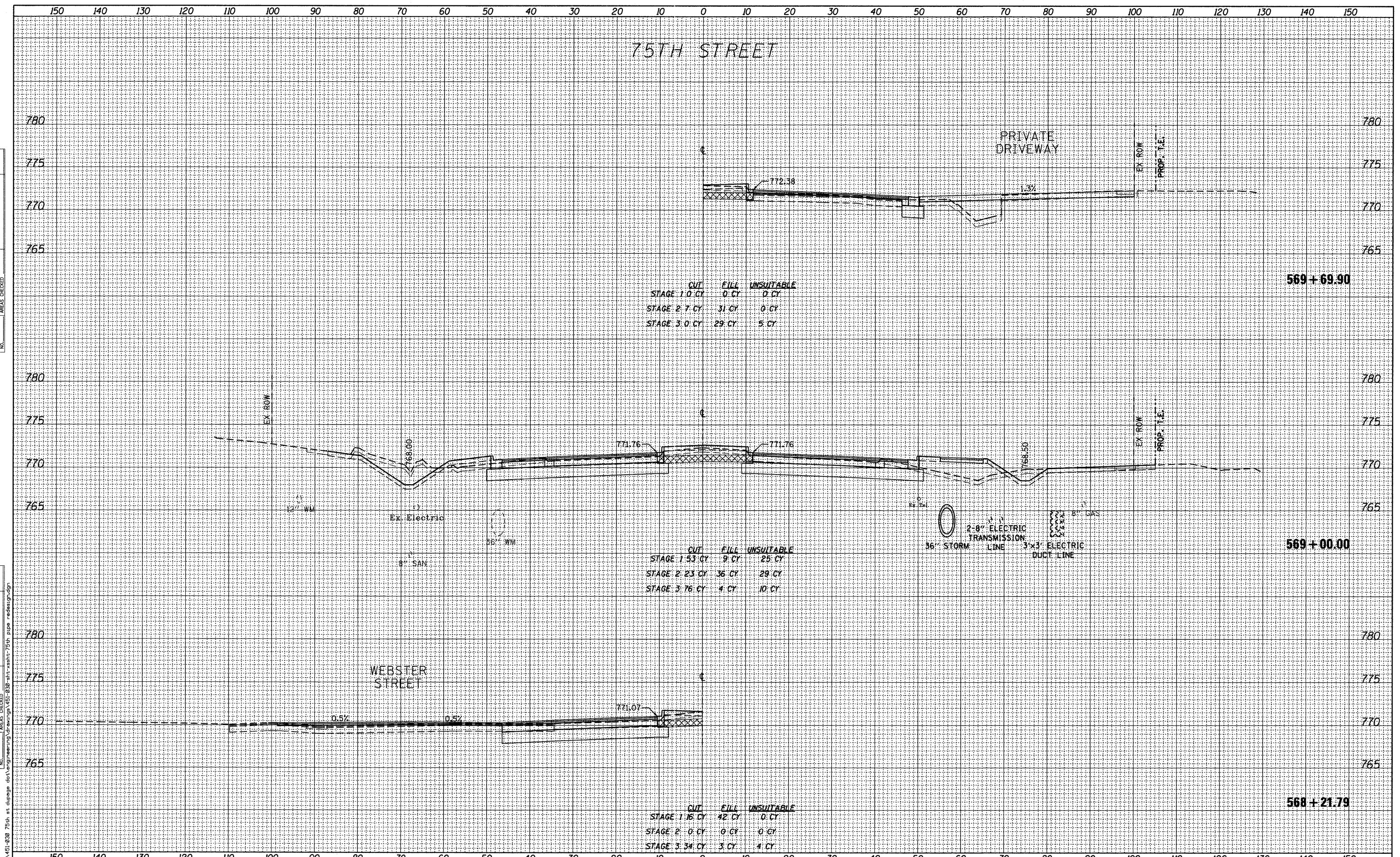


DATE	
BY	
FINAL SURVEY	
PLOTTED	
NOTE BOOK	
AREAS CHECKED	
NO.	

DATE	
BY	
ORIGINAL SURVEY	
PLOTTED	
NOTE BOOK	
AREAS CHECKED	
NO.	



	CUT	FILL	UNSUITABLE
STAGE 1	0 CY	0 CY	0 CY
STAGE 2	7 CY	31 CY	0 CY
STAGE 3	0 CY	29 CY	5 CY

	CUT	FILL	UNSUITABLE
STAGE 1	53 CY	9 CY	25 CY
STAGE 2	23 CY	36 CY	29 CY
STAGE 3	76 CY	4 CY	10 CY

	CUT	FILL	UNSUITABLE
STAGE 1	16 CY	42 CY	0 CY
STAGE 2	0 CY	0 CY	0 CY
STAGE 3	34 CY	3 CY	4 CY

B Bollinger, Lach & Associates, Inc.
ITASCA, ILLINOIS

USER NAME = gellwanger	DESIGNED - GJE	REVISED -
PLOT SCALE = 10,0000' / IN.	DRAWN - DC	REVISED -
PLOT DATE = 9/7/2011	CHECKED - JP	REVISED -
	DATE - 09/08/11	REVISED -

**STATE OF ILLINOIS
DEPARTMENT OF TRANSPORTATION**

V: 1"=5'		CROSS SECTIONS 75TH STREET	
SCALE: H: 1"=10'	SHEET NO. 185 OF 198 SHEETS	STA. 568+21.79	TO STA. 569+69.90

F.A.P. RTE. 0369	SECTION 07-00232-04-WR	COUNTY DUPAGE	TOTAL SHEETS 198	SHEET NO. 185
CONTRACT NO. 63632				ILLINOIS FED. AID PROJECT

FILE NAME = F:\451-938 75th at dupage.dwg
 USER: gellwanger
 DATE: 9/7/2011 10:00:00 AM
 PLOT SCALE: 10,0000' / IN.
 PLOT DATE: 9/7/2011