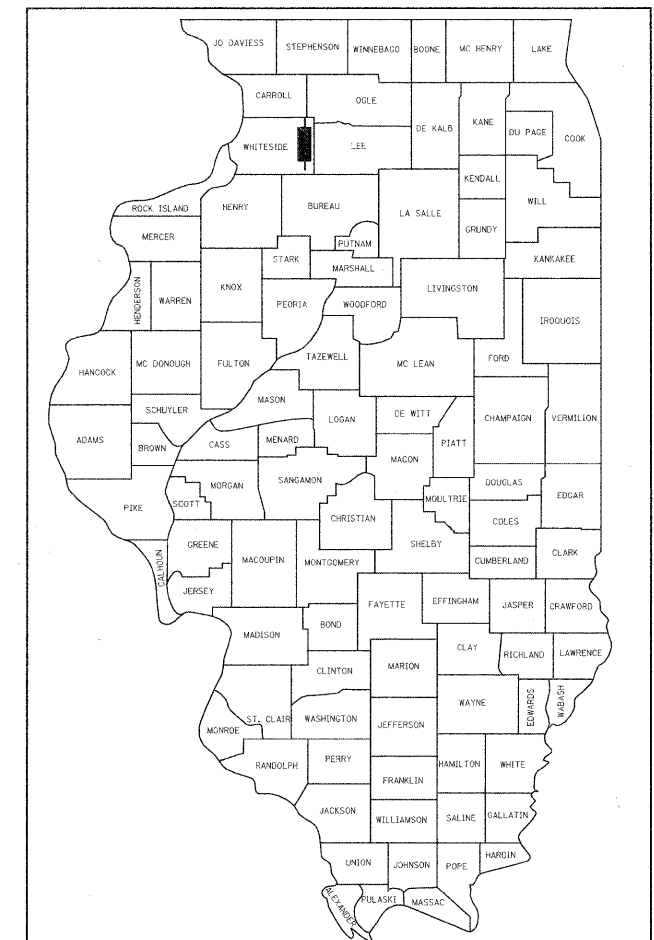


F.A.P. RTE.	SECTION	COUNTY	TOTAL SHEETS	SHEET NO.
646	1B-2	WHITESIDE	257	1
FED. ROAD DIST. NO.	ILLINOIS CONTRACT NO. 64B80		4257+5 = 262	

D-92-145-05



LOCATION OF SECTION INDICATED THUS: - [Symbol] -

STATE OF ILLINOIS  
DEPARTMENT OF TRANSPORTATION  
DIVISION OF HIGHWAYS

SUBMITTED Sept. 6, 2011  
*Eric S. Thibault*  
DEPUTY DIRECTOR OF HIGHWAYS, REGION TWO ENGINEER

October 14, 2011  
*Scott E. Stitt P.E.*  
acting ENGINEER OF DESIGN AND ENVIRONMENT

October 14, 2011  
*Christine M. Reed*  
DIRECTOR OF HIGHWAYS, CHIEF ENGINEER

ENGINEERS SIGNATURE BOX

APPLIES TO SHEETS  
1-103 AND 243-257

STATE OF ILLINOIS  
REGISTERED PROFESSIONAL ENGINEER  
GLENN E. SCHIRMER  
062-035841

SIGNED *[Signature]* 11/30/2011  
7/14/11 LIC. EXP. DATE

PRINTED BY THE AUTHORITY  
OF THE STATE OF ILLINOIS

STATE OF ILLINOIS  
DEPARTMENT OF TRANSPORTATION  
DIVISION OF HIGHWAYS  
**PROPOSED  
HIGHWAY PLANS**

FAP ROUTE 646 (IL 40)  
SECTION 1B-2  
PROJECT: ACBRF-0646(077)  
IL 40 OVER THE ROCK RIVER  
BRIDGE REPLACEMENT  
WHITESIDE COUNTY  
C-92-147-09

FOR INDEX OF SHEETS, SEE SHEET NO. 2  
FOR STATE STANDARDS AND DISTRICT STANDARDS, SEE SHEET NO. 2

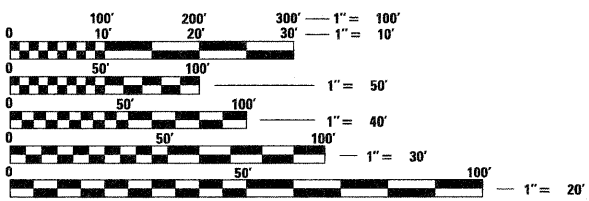
PREPARED BY:



LICENSE NO. 184.001397  
8609 W. BRYN MAWR AVE.  
SUITE 204  
CHICAGO, ILLINOIS 60631  
TEL 773-714-0050  
FAX 773-714-0055  
CONTACT: DUANE O'LAUGHLIN

DESIGN DESIGNATION  
3300 (30) OTHER PRINCIPAL ARTERIAL 3.87 (PCC-20)

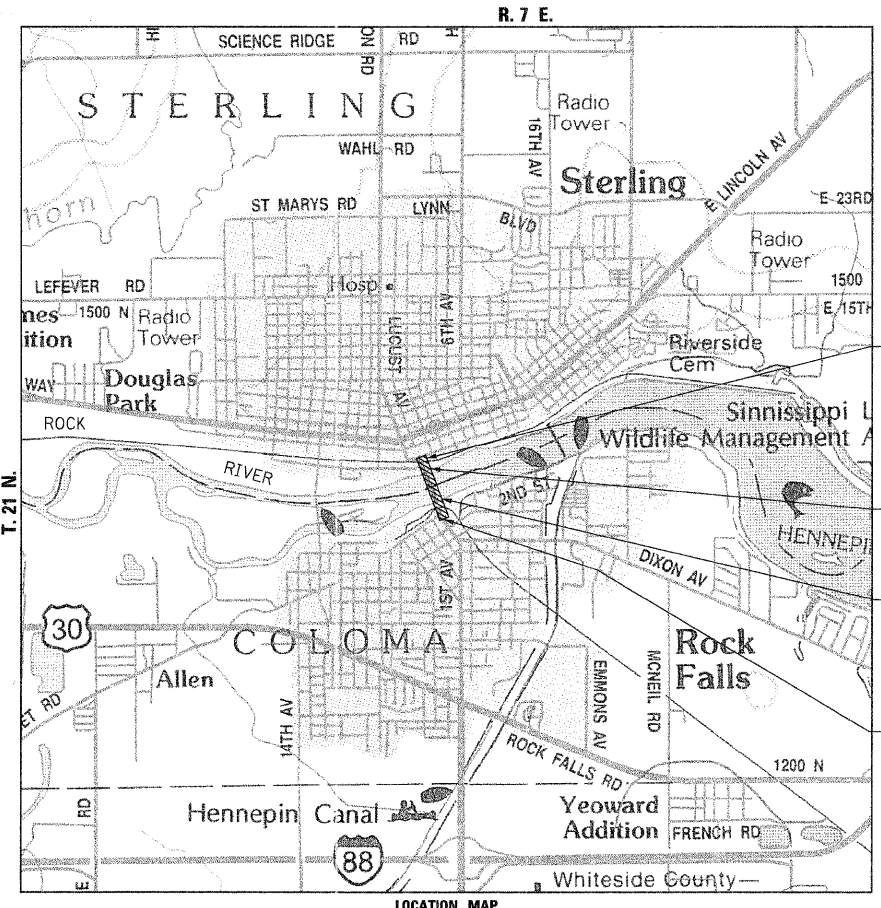
TRAFFIC DATA  
IL 40 ADT (2010) 26,000 (5% TRUCKS)  
ADT (2030) 33,000 (5% TRUCKS)  
DESIGN SPEED 35 MPH  
POSTED SPEED 30 MPH



FULL SIZE PLANS HAVE BEEN PREPARED USING STANDARD ENGINEERING SCALES. REDUCED SIZED PLANS WILL NOT CONFORM TO STANDARD SCALES. IN MAKING MEASUREMENTS ON REDUCED PLANS, THE ABOVE SCALES MAY BE USED.

J.U.L.I.E.  
JOINT UTILITY LOCATION INFORMATION FOR EXCAVATION  
1-800-892-0123  
OR 811

CONTRACT NO. 64B80



IMPROVEMENT ENDS  
STA. 739 + 61.46

SECTION ENDS  
STA. 736 + 55.00

REMOVAL OF EXISTING STRUCTURE  
NO. 098-0014 (12 SPAN PRECAST BOX BEAM  
BRIDGE) AND CONSTRUCTION OF STRUCTURE  
NO. 098-0115 (8 SPAN PLATE GIRDER WITH  
COMPOSITE CONCRETE DECK)

SECTION BEGINS  
STA. 720 + 49.00

STERLING TOWNSHIP  
SCALE: 1" = APPROX. 1 MILE  
GROSS LENGTH OF PROJECT = 1,606 LIN. FT. = 0.30 MILES  
NET LENGTH OF PROJECT = 1,606 LIN. FT. = 0.30 MILES

PROJECT ENGINEER: REBECCA MARRUFFO  
PROJECT MANAGER: FAITH DUNCAN (815-284-5364)