

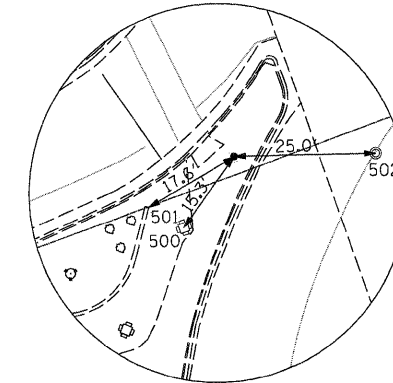
HORIZONTAL & VERTICAL CONTROL

HORIZONTAL CONTROL POINTS							
POINT	NORTH	EAST	ELEVATION	CHAIN	STATION	OFFSET	DESCRIPTION
1	1865406.9230	2424562.4610	648.4110	PR_IL40	743+42.12	825.6567' LT	PK NAIL GPS CONTROL POINT
2	1865379.0930	2425413.0080	650.0100	PR_IL40	740+29.80	34.8553' LT	PUNCH MARK
3	1865183.1520	2425449.7790	648.8310	PR_IL40	738+33.10	67.3158' LT	PIN W/IDOT CAP TOPO SURVEY POINT
4	1865060.6920	2425598.8410	634.8750	PR_IL40	736+67.05	30.8743' RT	PUNCH MARK TOPO SURVEY POINT
5	1863804.4520	2425965.8570	646.8590	PR_IL40	723+48.48	44.8082' LT	PIN W/IDOT CAP TOPO SURVEY POINT
6	1863693.4150	2426071.3490	648.4070	PR_IL40	722+21.92	51.8772' RT	PIN W/IDOT CAP TOPO SURVEY POINT

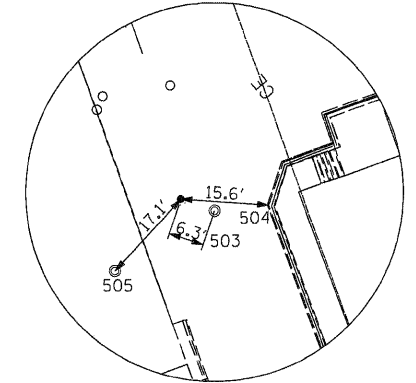
SURVEY WORK POINTS							
POINT	NORTH	EAST	ELEVATION	CHAIN	STATION	OFFSET	DESCRIPTION
100	1865292.6400	2425335.4420	649.5240	PR_IL40	739+75.09	137.3116' LT	60D NAIL TOPO SURVEY POINT
101	1865439.0340	2425653.1100	650.3940	PR_IL40	740+04.01	211.2681' RT	PK NAIL-SIDEWALK CRACK TOPO SURVEY POINT
102	1863917.4220	2425939.3070	636.9310	PR_IL40	724+76.28	40.2031' LT	PIN W/IDOT CAP TOPO SURVEY POINT
103	1863961.2210	2426042.3560	642.1820	PR_IL40	724+82.19	71.6113' RT	PIN W/IDOT CAP TOPO SURVEY POINT
104	1863846.9710	2426037.5350	647.2610	PR_IL40	723+81.30	32.1939' RT	FND PIN NO CAP TOPO SURVEY POINT
105	1863758.1500	2426067.5520	649.3080	PR_IL40	722+96.00	54.6279' RT	FND PIN W/WES CAP TOPO SURVEY POINT
106	1863611.2620	2425990.9900	649.3570	PR_IL40	721+67.25	49.7415' LT	PK NAIL TOPO SURVEY POINT
107	1864916.2770	2425583.2040	643.0870	PR_IL40	735+36.69	33.2114' LT	PUNCH MARK IN SIDEWALK TOPO SURVEY POINT
108	1863729.0660	2425841.3140	645.5620	PR_IL40	722+76.22	172.6122' LT	PK NAIL TOPO SURVEY POINT
109	1863934.7660	2425862.5750	634.1820	PR_IL40	725+18.82	106.376' LT	60D NAIL TOPO SURVEY POINT
110	1863472.4260	2426172.8110	648.0500	PR_IL40	719+59.71	29.1438' RT	PK NAIL TOPO SURVEY POINT
111	1863491.5030	2426049.2220	649.1460	PR_IL40	720+45.60	61.7423' LT	PK NAIL TOPO SURVEY POINT

REFERENCE TIES				
POINT	CHAIN	STATION	OFFSET	DESCRIPTION
500	PR_IL40	740+21.09	47.4472' LT	TRAFFIC SIGNAL
501	PR_IL40	740+26.59	52.1129' LT	RETAINING WALL / CORNER
502	PR_IL40	740+21.69	11.1949' LT	MANHOLE LID / CENTER
503	PR_IL40	736+63.12	35.7998' RT	MANHOLE LID / CENTER
504	PR_IL40	736+60.75	45.0976' RT	WALL / CORNER
505	PR_IL40	736+59.17	15.6681' RT	MANHOLE LID / CENTER
506	PR_IL40	723+68.39	36.1432' LT	MANHOLE LID / CENTER
507	PR_IL40	723+61.48	30.9928' LT	CATCH BASIN / CORNER
508	PR_IL40	723+33.67	56.1629' LT	SIDEWALK / CORNER/END
509	PR_IL40	722+30.51	52.586' RT	LIGHT POLE
510	PR_IL40	722+44.77	52.3043' RT	EDGE OF PARKING LOT / CORNER
511	PR_IL40	722+20.22	44.1621' RT	SIDEWALK / CORNER/END
512	PR_IL40	720+65.62	54.8679' RT	COMMERCIAL BUILDING / CORNER
513	PR_IL40	720+57.37	53.2012' RT	TRAFFIC SIGNAL CONTROLLER / CORNER
514	PR_IL40	720+57.03	43.9966' RT	TRAFFIC SIGNAL CANTILEVER

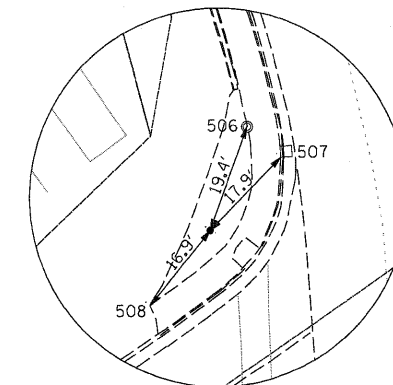
APPARENT PROPERTY CORNERS							
POINT	NORTH	EAST	ELEVATION	CHAIN	STATION	OFFSET	DESCRIPTION
700	1863567.9000	2426125.9550	649.2250	PR_IL40	720+64.90	44.8036' RT	FND CUT X BLOCK CORNER
701	1865079.3110	2425507.5270	632.2140	PR_IL40	737+15.77	48.5652' LT	FND CUT X PROPERTY CORNER
702	1863565.6490	2426280.3230	647.1690	PR_IL40	719+75.37	170.5791' RT	FND CUT X PROPERTY CORNER
703	1863710.9750	2426330.7800	645.8030	PR_IL40	720+66.33	294.647' RT	FND CUT X PROPERTY CORNER



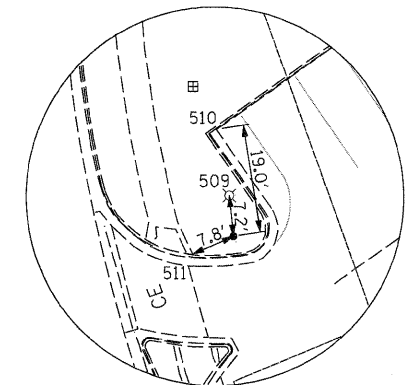
HORIZONTAL CONTROL POINT No. 2



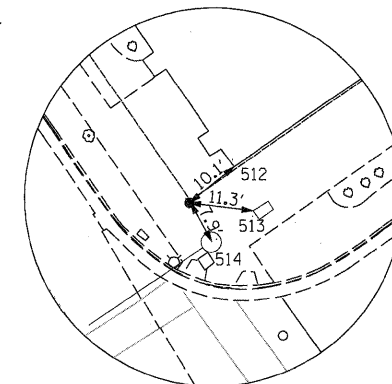
HORIZONTAL CONTROL POINT No. 4



HORIZONTAL CONTROL POINT No. 5



HORIZONTAL CONTROL POINT No. 6



HORIZONTAL CONTROL POINT No. 700



DATE TIME
 02/14/2011 10:00:00
 USER NAME
 dwozniarski
 PLOT SCALE
 N/A
 PLOT DATE
 7/14/2011

FILE NAME = D264888-sh-t-ATB1.dgn	USER NAME = dwozniarski	DESIGNED - DRAWN - DMW	REVISED - REVISED -
		CHECKED -	REVISED -
		DATE - 2-22-2010	REVISED -

**STATE OF ILLINOIS
DEPARTMENT OF TRANSPORTATION**

HORIZONTAL AND VERTICAL CONTROL			
SCALE: N/A	SHEET NO. 1 OF 3 SHEETS	STA.	TO STA.

F.A.P. RTE. 646	SECTION IB-2	COUNTY WHITESIDE	TOTAL SHEETS 257	SHEET NO. 25
FED. ROAD DIST. NO.		ILLINOIS FED. AID PROJECT		
CONTRACT NO. 64B80				