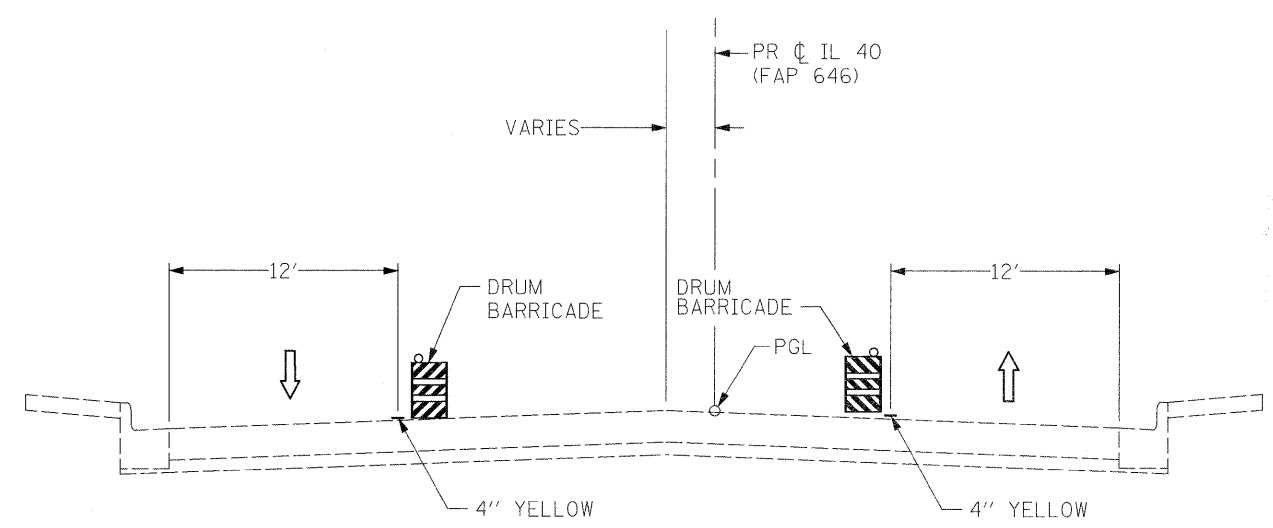
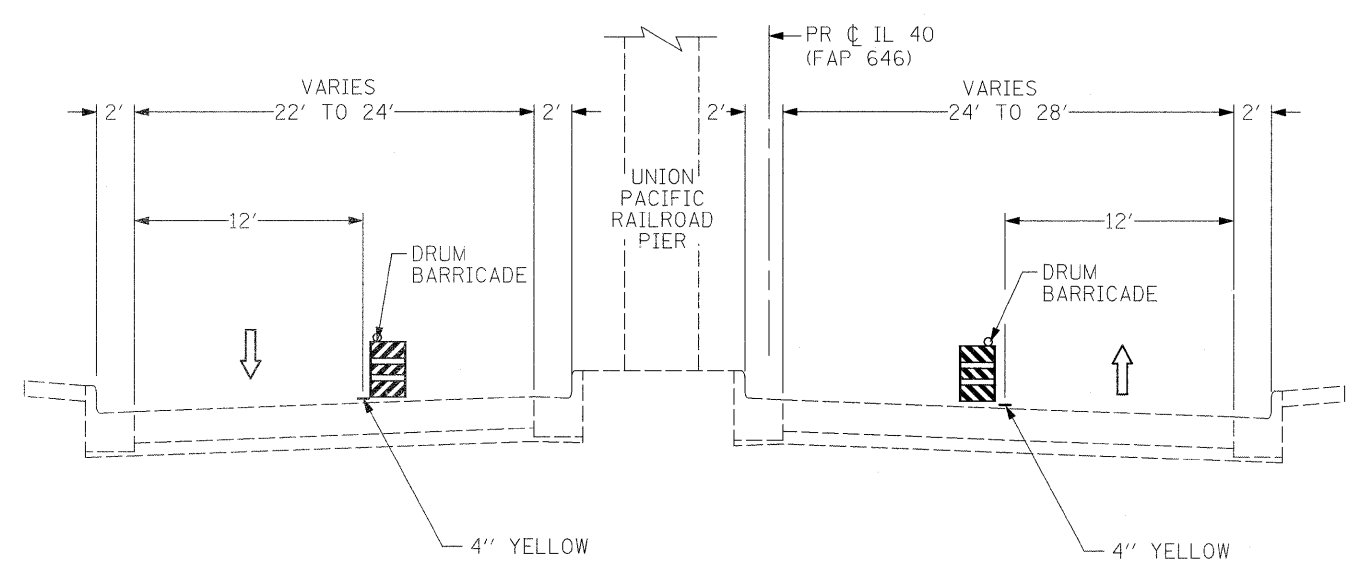


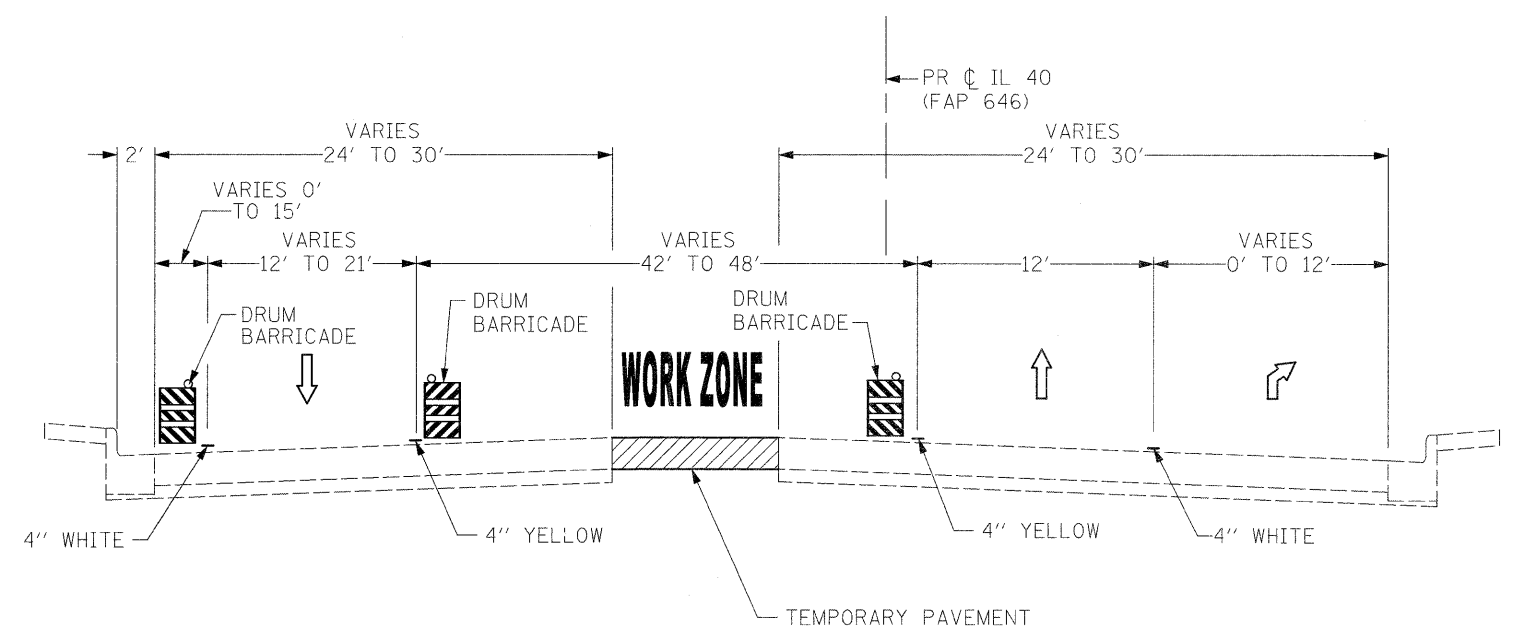
PRE-STAGE TYPICAL SECTION (BRIDGE)
 STA 729+50 TO STA 734+96 - LOOKING NORTH



PRE-STAGE TYPICAL SECTION (ROAD)
 STA 735+96 TO STA 737+00 - LOOKING NORTH



PRE-STAGE TYPICAL SECTION (ROAD)
 STA 737+00 TO STA 738+00 - LOOKING NORTH



PRE-STAGE TYPICAL SECTION (ROAD)
 STA 738+00 TO STA 740+00 - LOOKING NORTH