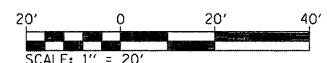
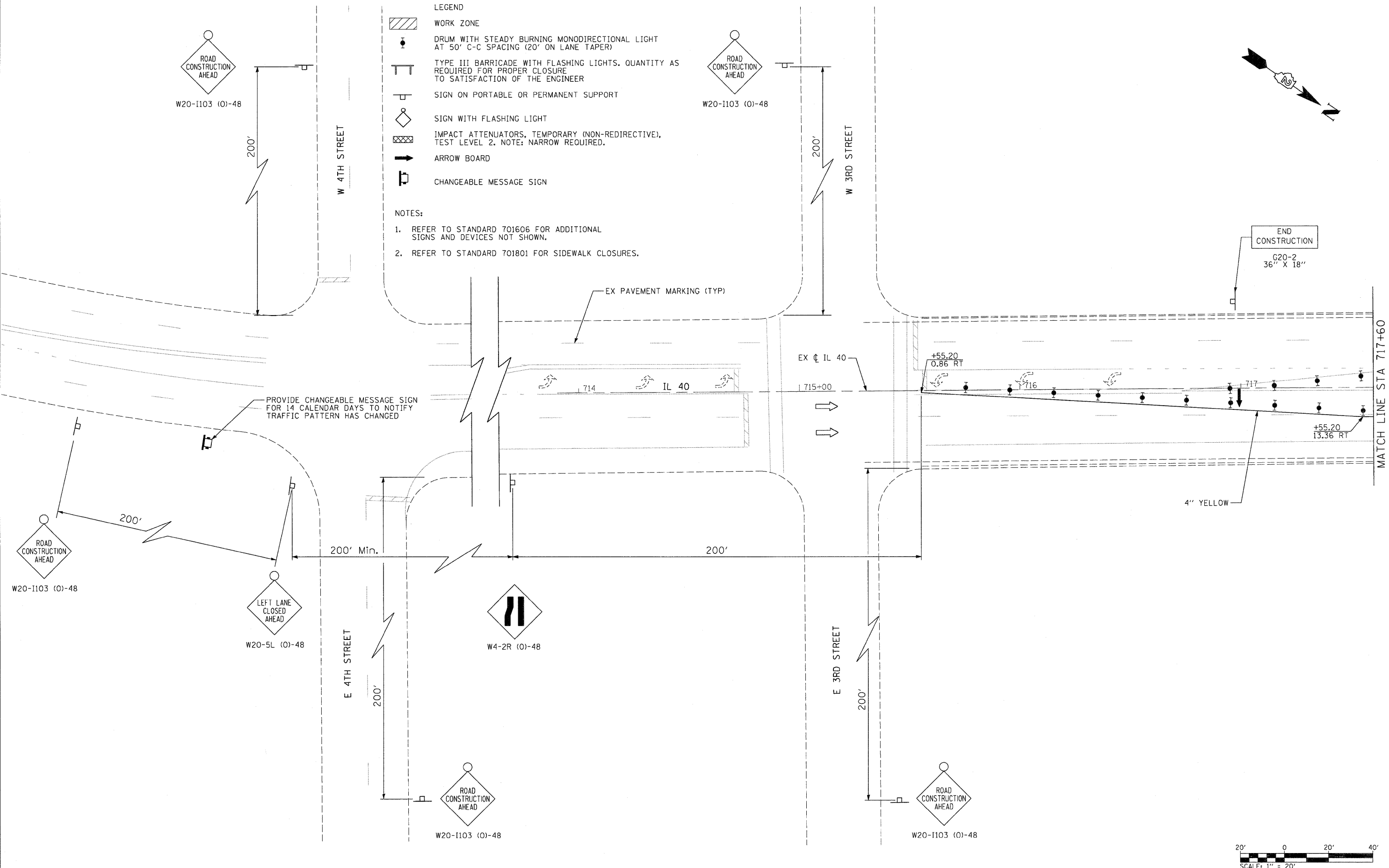
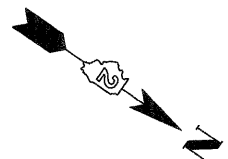




- LEGEND**
- WORK ZONE
 - DRUM WITH STEADY BURNING MONODIRECTIONAL LIGHT AT 50' C-C SPACING (20' ON LANE TAPER)
 - TYPE III BARRICADE WITH FLASHING LIGHTS. QUANTITY AS REQUIRED FOR PROPER CLOSURE TO SATISFACTION OF THE ENGINEER
 - SIGN ON PORTABLE OR PERMANENT SUPPORT
 - SIGN WITH FLASHING LIGHT
 - IMPACT ATTENUATORS, TEMPORARY (NON-REDIRECTIVE), TEST LEVEL 2. NOTE: NARROW REQUIRED.
 - ARROW BOARD
 - CHANGEABLE MESSAGE SIGN

- NOTES:**
1. REFER TO STANDARD 701606 FOR ADDITIONAL SIGNS AND DEVICES NOT SHOWN.
 2. REFER TO STANDARD 701801 FOR SIDEWALK CLOSURES.



FILE NAME =
0264888-sht-staging22.dgn

USER NAME = dwozniarski
 DESIGNED -
 DRAWN -
 PLOT SCALE = 20.00' / IN.
 PLOT DATE = 7/14/2011

REVISIED -
 REVISIED -
 REVISIED -
 REVISIED -
 DATE - 2-22-2010

**STATE OF ILLINOIS
DEPARTMENT OF TRANSPORTATION**

**IL 40
MAINTENANCE OF TRAFFIC - STAGE 2**
 SCALB: 20' SHEET NO. 22 OF 35 SHEETS STA. 714+00 TO STA. 716+00

F.A.P. RTE.	SECTION	COUNTY	TOTAL SHEETS	SHEET NO.
646	1B-2	WHITESIDE	257	49
FED. ROAD DIST. NO. ILLINOIS FED. AID PROJECT			CONTRACT NO. 64B80	