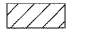


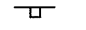




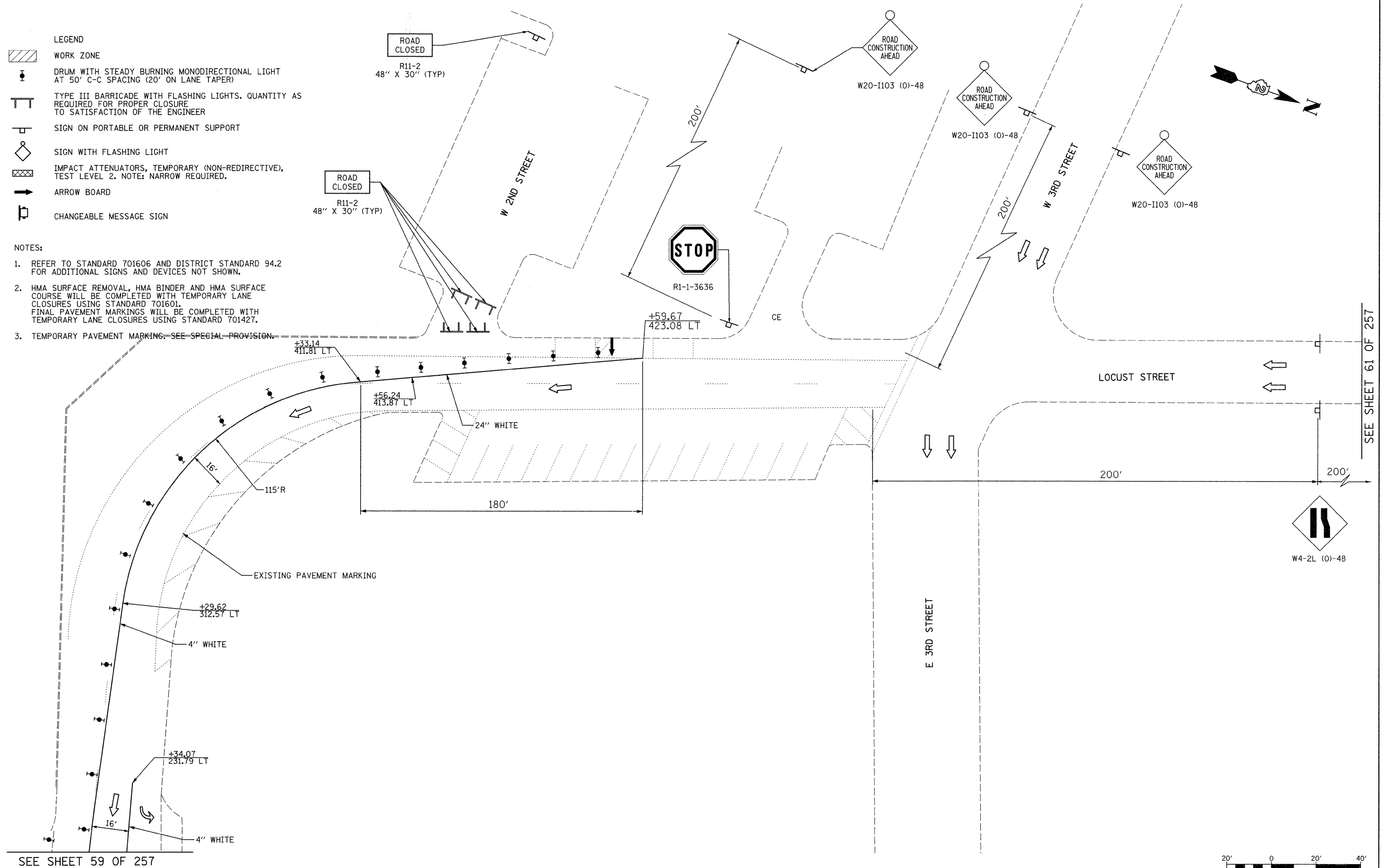


- LEGEND**
-  WORK ZONE
 -  DRUM WITH STEADY BURNING MONODIRECTIONAL LIGHT AT 50' C-C SPACING (20' ON LANE TAPER)
 -  TYPE III BARRICADE WITH FLASHING LIGHTS. QUANTITY AS REQUIRED FOR PROPER CLOSURE TO SATISFACTION OF THE ENGINEER
 -  SIGN ON PORTABLE OR PERMANENT SUPPORT
 -  SIGN WITH FLASHING LIGHT
 -  IMPACT ATTENUATORS, TEMPORARY (NON-REDIRECTIVE), TEST LEVEL 2. NOTE: NARROW REQUIRED.
 -  ARROW BOARD
 -  CHANGEABLE MESSAGE SIGN

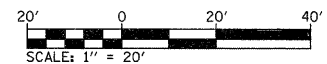
NOTES:

1. REFER TO STANDARD 701606 AND DISTRICT STANDARD 94.2 FOR ADDITIONAL SIGNS AND DEVICES NOT SHOWN.
2. HMA SURFACE REMOVAL, HMA BINDER AND HMA SURFACE COURSE WILL BE COMPLETED WITH TEMPORARY LANE CLOSURES USING STANDARD 701601. FINAL PAVEMENT MARKINGS WILL BE COMPLETED WITH TEMPORARY LANE CLOSURES USING STANDARD 701427.
3. TEMPORARY PAVEMENT MARKING - SEE SPECIAL PROVISION.



SEE SHEET 59 OF 257

SEE SHEET 61 OF 257



FILE NAME =	USER NAME = grantpm	DESIGNED -	REVISED -	STATE OF ILLINOIS DEPARTMENT OF TRANSPORTATION	IL 40 MAINTENANCE OF TRAFFIC - STAGE 3	F.A.P. RTE.	SECTION	COUNTY	TOTAL SHEETS	SHEET NO.	
ct:\pw\work\p\dot\grantpm\dms82258\026	880-ah-t-staging33.dgn	DRAWN -	REVISED -			646	1B-2	WHITESIDE	257	60	
	PLOT SCALE = 20.00' / in.	CHECKED -	REVISED -			CONTRACT NO. 64B80					
	PLOT DATE = Fri Aug 12 14:48:52 2011	DATE - 2-22-2010	REVISED -			ILLINOIS FED. AID PROJECT					