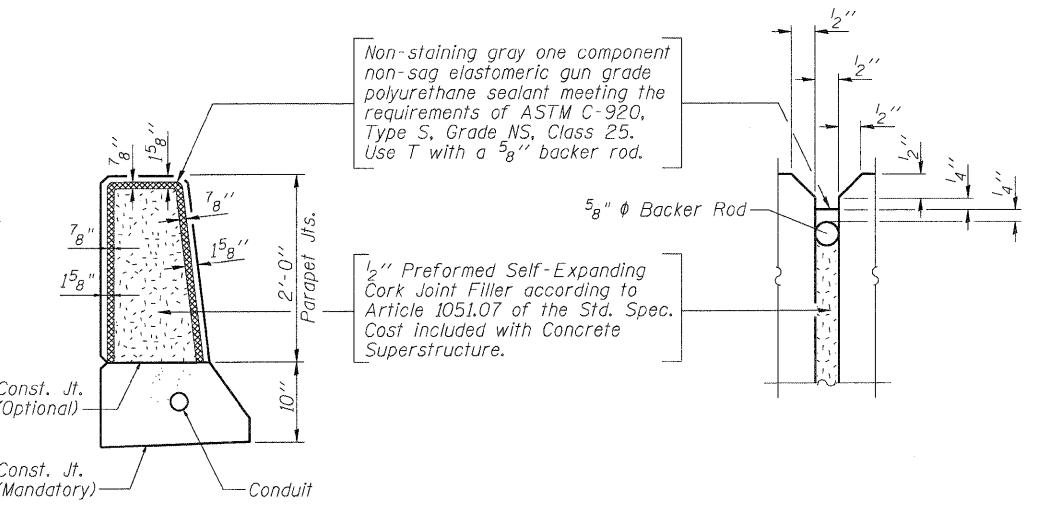


SECTION F-F

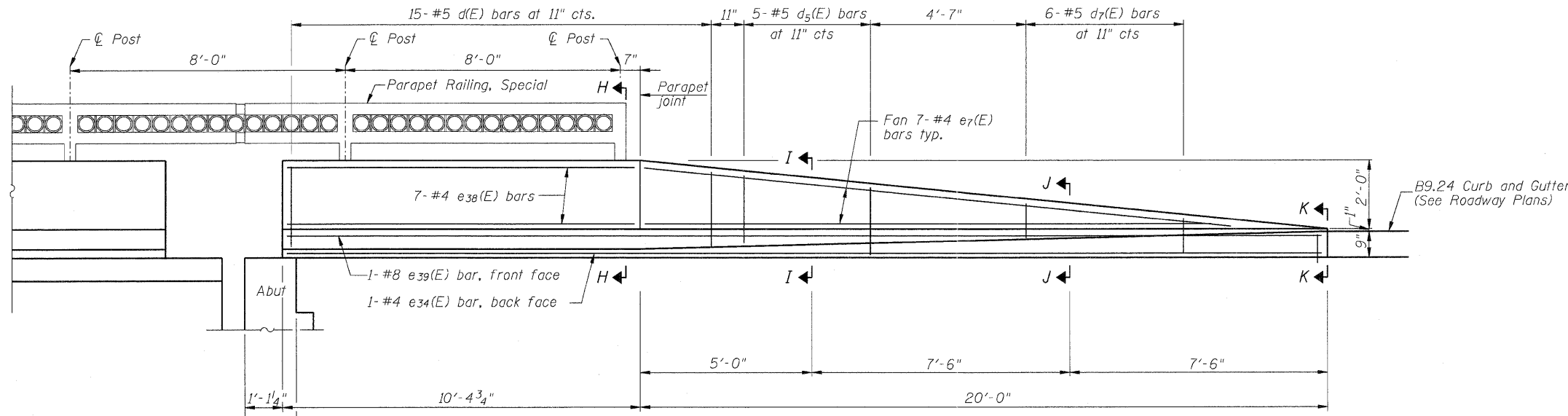


PARAPET JOINT DETAILS

Non-staining gray one component non-sag elastomeric gun grade polyurethane sealant meeting the requirements of ASTM C-920, Type S, Grade NS, Class 25. Use T with a 5/8" backer rod.

1/2" Preformed Self-Expanding Cork Joint Filler according to Article 1051.07 of the Std. Spec. Cost included with Concrete Superstructure.

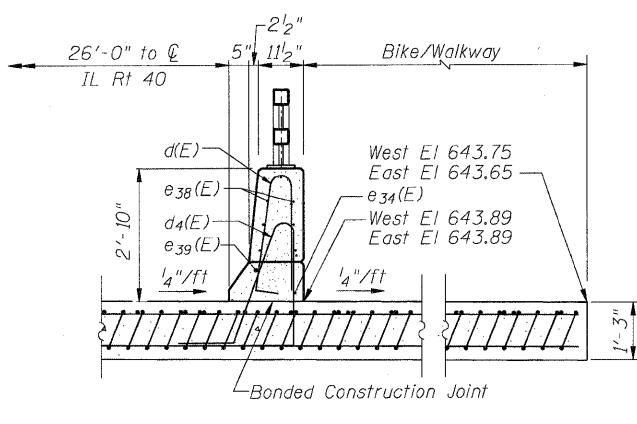
- * Tilt #9 b₁₀(E) bars as required to maintain clearance.
- ** Longitudinal grade for both bike paths shall transition from top of curb elevation at north end of approach slab to standard approach slab section as shown in Section D-D on Sheet of . Cross slope shall transition from level to 1/4"/ft as shown below.
- *** Cost included with Concrete Superstructure.



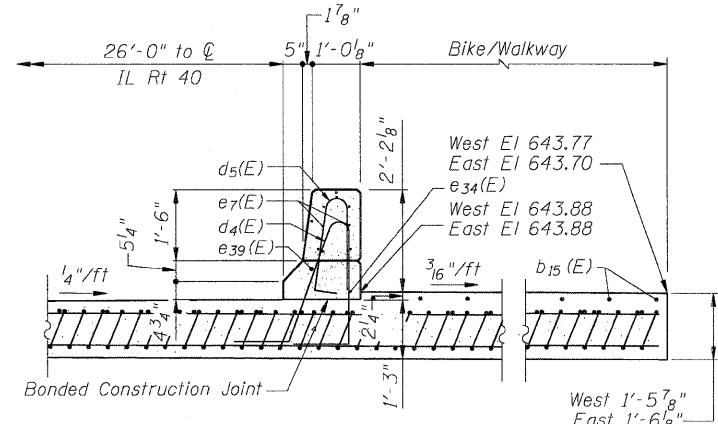
VIEW G-G
(Typical both parapets)

NOTES

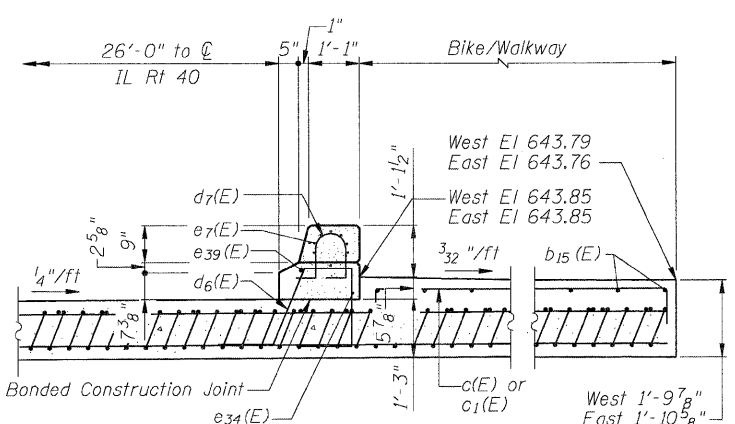
- See Sheets 44 & 45 of 103 for railing details.
- See Sheet 35 of 103 for steel parapet details.
- See electrical plans for expansion fitting and conduit in parapet details.
- Cut e₇(E) bars as needed to alleviate congestion near end of parapet transition.
- See Sheet 36 of 103 for d₄(E) and d₆(E) bar spacing.



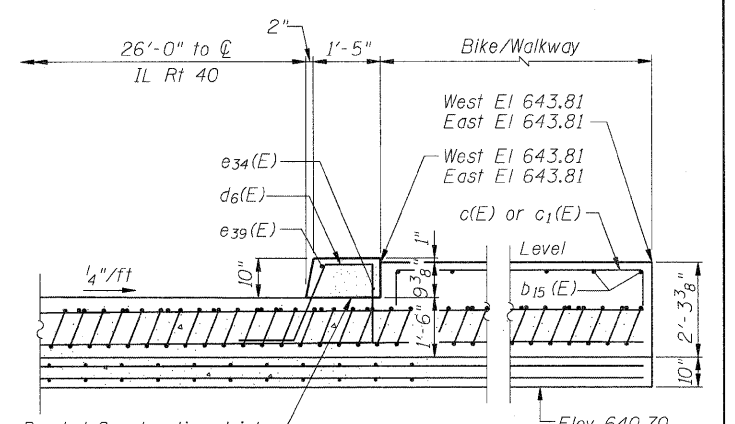
SECTION H-H



SECTION I-I



SECTION J-J



SECTION K-K

FILE NAME = 0264988-shs-napproach3.dgn	USER NAME = dwoznaraki	DESIGNED - ACB	REvised -	STATE OF ILLINOIS DEPARTMENT OF TRANSPORTATION	NORTH APPROACH SLAB DETAILS (SHEET 3 OF 3) STRUCTURE NO. 098-0115	F.A.P. RTE. 646	SECTION 1B-2	COUNTY WHITESIDE	TOTAL SHEETS 257	SHEET NO. 141
PLOT SCALE = 2,0000' / IN.	CHECKED - JMB	REvised -	CONTRACT NO. 64B80							
PLOT DATE = 7/18/2011	DRAWN - RLK	REvised -	ILLINOIS FED. AID PROJECT							
	CHECKED - ACB	REvised -								