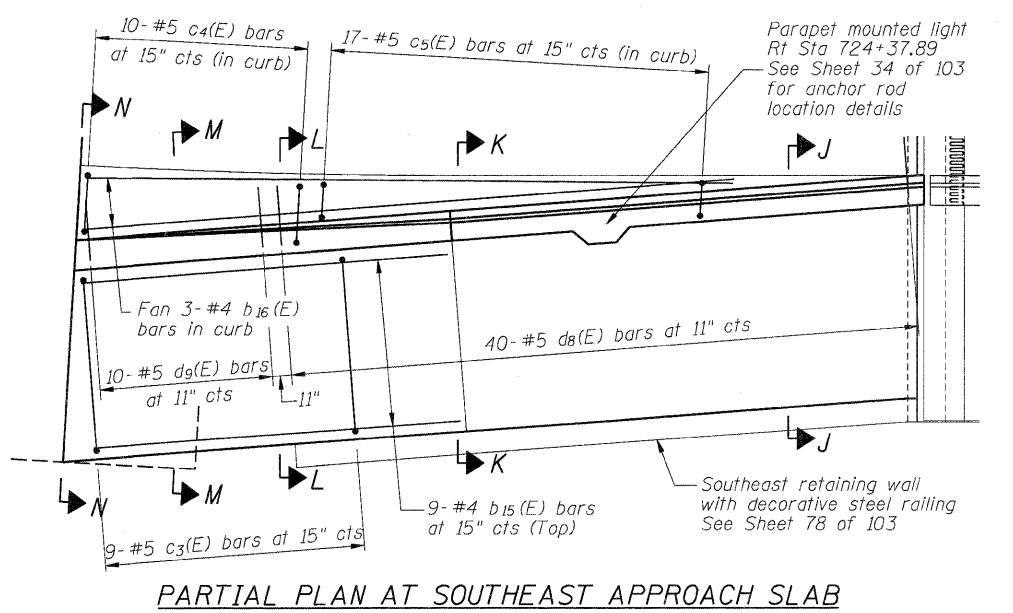


Notes:  
 See sheet 40 of 103 for Sections C-C, D-D and E-E.  
 See sheet 41 of 103 for Section F-F, View G-G and Section J-J thru N-N.  
 \*\* Closed cell joint filler according to Article 1051.08 of the Std Specifications: Full depth of slab, full length of slab. Cost included with Concrete Superstructure.  
 \*\*\*\* Cost included with Concrete Superstructure.



**MIN BAR LAP**  
 #4 bar = 2'-7"  
 #5 bar = 3'-3"

FILE NAME = D264B88-sh1-sapproach.dgn	USER NAME = dwozniarski	DESIGNED - ACB	REVISED -	STATE OF ILLINOIS DEPARTMENT OF TRANSPORTATION	SOUTH APPROACH SLAB DETAILS (SHEET 1 OF 4) STRUCTURE NO. 098-0115	F.A.P. RTE. = 646	SECTION = 1B-2	COUNTY = WHITESIDE	TOTAL SHEETS = 257	SHEET NO. = 142
	PLOT SCALE = 5.0000' / IN.	DRAWN - RLK	REVISED -			SHEET NO. 39 OF 103 SHEETS	CONTRACT NO. 64B80			
PLOT DATE = 7/18/2011	CHECKED - ACB	REVISED -				ILLINOIS FED. AID PROJECT				