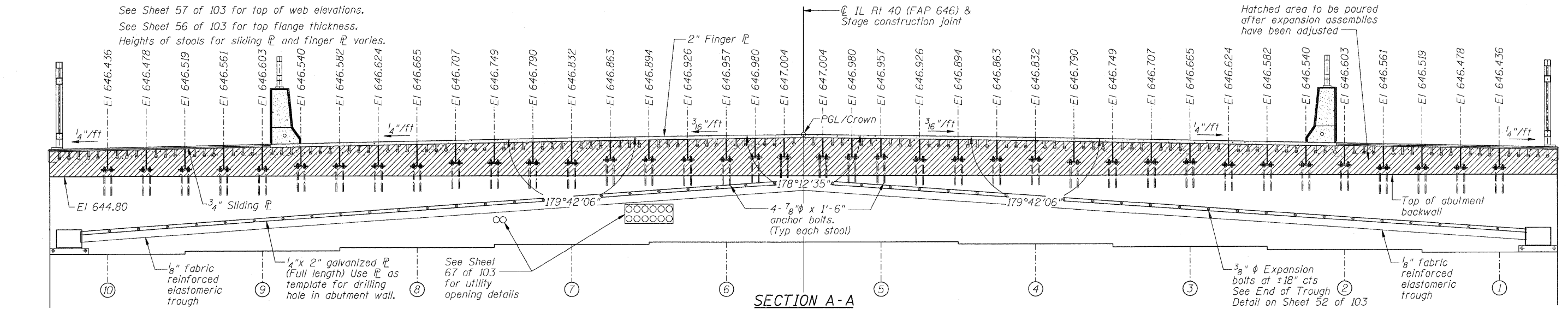


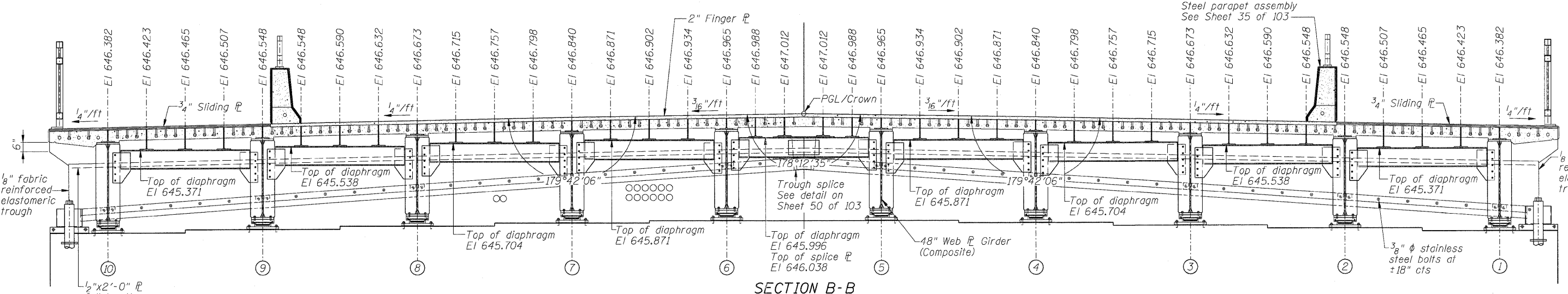
NOTES:

Work this sheet with sheets 50-52 of 103.
 Elevations shown in Section A-A are taken along front face of backwall at bottom of 2" finger PL or 3/4" sliding PL.
 Elevations shown in Section B-B are taken at CL bearing at bottom of 2" finger PL or 3/4" sliding PL.
 All sliding PL's shall have a raised pattern.
 See Sheet 57 of 103 for top of web elevations.
 See Sheet 56 of 103 for top flange thickness.
 Heights of stools for sliding PL and finger PL varies.

PLAN OF FINGER PLATE EXPANSION DEVICE AT SOUTH ABUTMENT



SECTION A-A



SECTION B-B

FILE NAME = D264888-sh-fingerplateabut.dgn

USER NAME = dwoznarski
 PLOT SCALE = 2.6667' / IN.
 PLOT DATE = 7/18/2011

DESIGNED - ACB
 CHECKED - JMB
 DRAWN - RLK
 CHECKED - ACB

REVISED -
 REVISED -
 REVISED -
 REVISED -

**STATE OF ILLINOIS
 DEPARTMENT OF TRANSPORTATION**

**FINGER PLATE EXPANSION JOINT - SOUTH ABUTMENT
 STRUCTURE NO. 098-0115**

SHEET NO. 48 OF 103 SHEETS

F.A.P. RTE.	SECTION	COUNTY	TOTAL SHEETS	SHEET NO.
646	1B-2	WHITESIDE	257	151
				CONTRACT NO. 64B80
ILLINOIS FED. AID PROJECT				