

**ABUTMENT BILL OF MATERIAL**

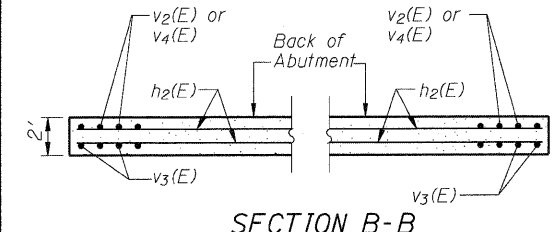
Bar	No.	Size	Length	Shape
h(E)	88	#7	38'-9"	—
h <sub>1</sub> (E)	12	#7	23'-9"	—
h <sub>2</sub> (E)	32	#5	38'-9"	—
h <sub>3</sub> (E)	4	#5	2'-10"	—
n(E)	94	#10	17'-1"	U
n <sub>1</sub> (E)	80	#5	8'-8"	U
t <sub>1</sub> (E)	80	#5	14'-11"	—
t <sub>2</sub> (E)	80	#11	14'-11"	—
v(E)	94	#10	19'-0"	—
v <sub>1</sub> (E)	80	#5	19'-1"	—
v <sub>2</sub> (E)	80	#5	10'-0"	—
v <sub>3</sub> (E)	80	#5	8'-1"	—
v <sub>4</sub> (E)	80	#5	3'-11"	—
v <sub>5</sub> (E)	130	#5	9'-10"	—
w(E)	64	#6	38'-9"	—
Concrete Structures			Cu. Yd.	495.3
Reinforcement Bars, Epoxy Coated			Pound	40,240
Concrete Sealer			Sq. Ft.	890
Rock Excavation For Structures			Cu. Yd.	202

Notes:  
 See sheet 82 of 103 for details of Bar Splicers.  
 See sheets 48, and 50-52 of 103 for details of Finger Plate assembly and Drainage System.  
 Space reinforcement to miss anchor bolts.  
 BF= Back Face, FF= Front Face, EF= Each Face  
 Allowable Bearing resistance,  $Q_a = 10$  ksf.  
 Maximum Applied Service Bearing Pressure,  $Q_{max} = 5.13$  ksf.

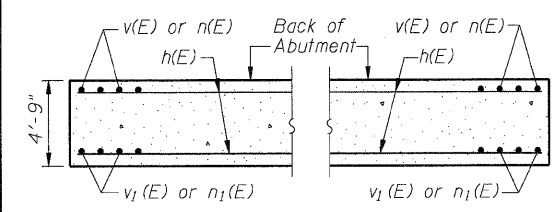
Provide 30"x12" blackout for proposed ducts, bottom of blackout Elev 642.26. The Contractor shall furnish 4" dia rigid galvanized steel pipe for the proposed conduits, see Electrical Plans. Once the duct package has been installed between the girders, the blackout shall be filled with non-shrink grout in accordance with Section 1024 of the Standard Specifications. The cost shall be included in Concrete Structures.

Pour Steps monolithically with wall.

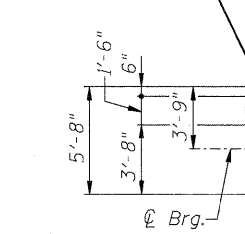
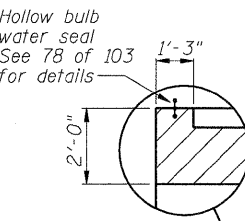
**SECTION A-A**



**SECTION B-B**

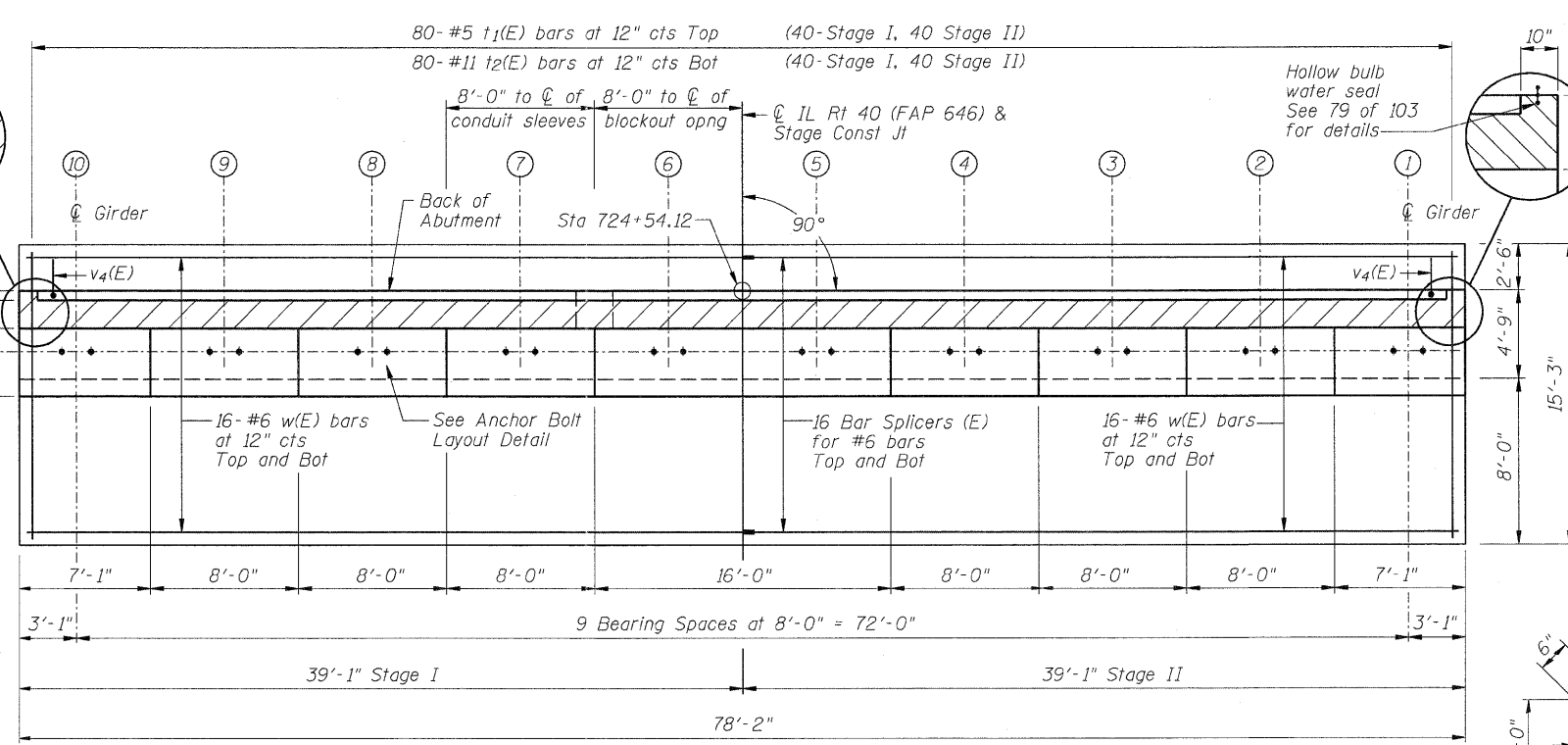


**SECTION C-C**

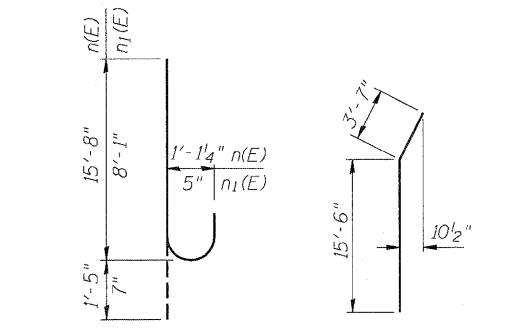


**MIN BAR LAP**  
 #5 bar = 3'-3"  
 #10 bar = 10'-10"

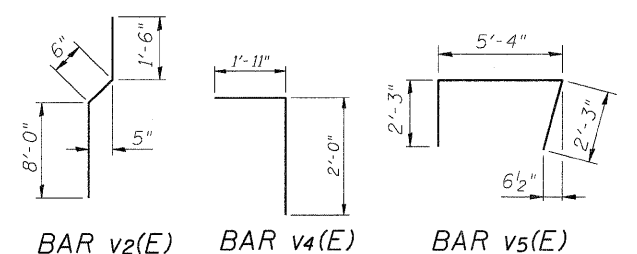
**ELEVATION**



**TOP VIEW**



**BARS n(E) & n<sub>1</sub>(E) BAR v<sub>1</sub>(E)**



**BAR v<sub>2</sub>(E) BAR v<sub>4</sub>(E) BAR v<sub>5</sub>(E)**

FILE NAME = D264880-shr-sabutl.dgn

USER NAME = dwoznarski  
 PLOT SCALE = 5.0000' / IN.  
 PLOT DATE = 7/18/2011

DESIGNED - ACB  
 CHECKED - JMB  
 DRAWN - RLK  
 CHECKED - ACB

REVISED -  
 REVISED -  
 REVISED -  
 REVISED -

**STATE OF ILLINOIS  
 DEPARTMENT OF TRANSPORTATION**

**SOUTH ABUTMENT  
 STRUCTURE NO. 098-0115**  
 SHEET NO. 67 OF 103 SHEETS

F.A.P. RTE. 646	SECTION IB-2	COUNTY WHITESIDE	TOTAL SHEETS 257	SHEET NO. 170
ILLINOIS FED. AID PROJECT			CONTRACT NO. 64B80	