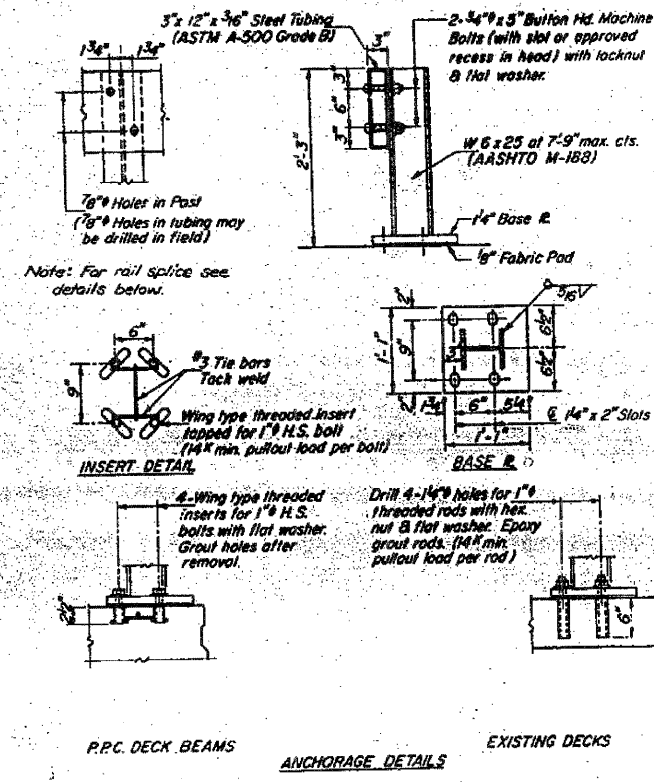
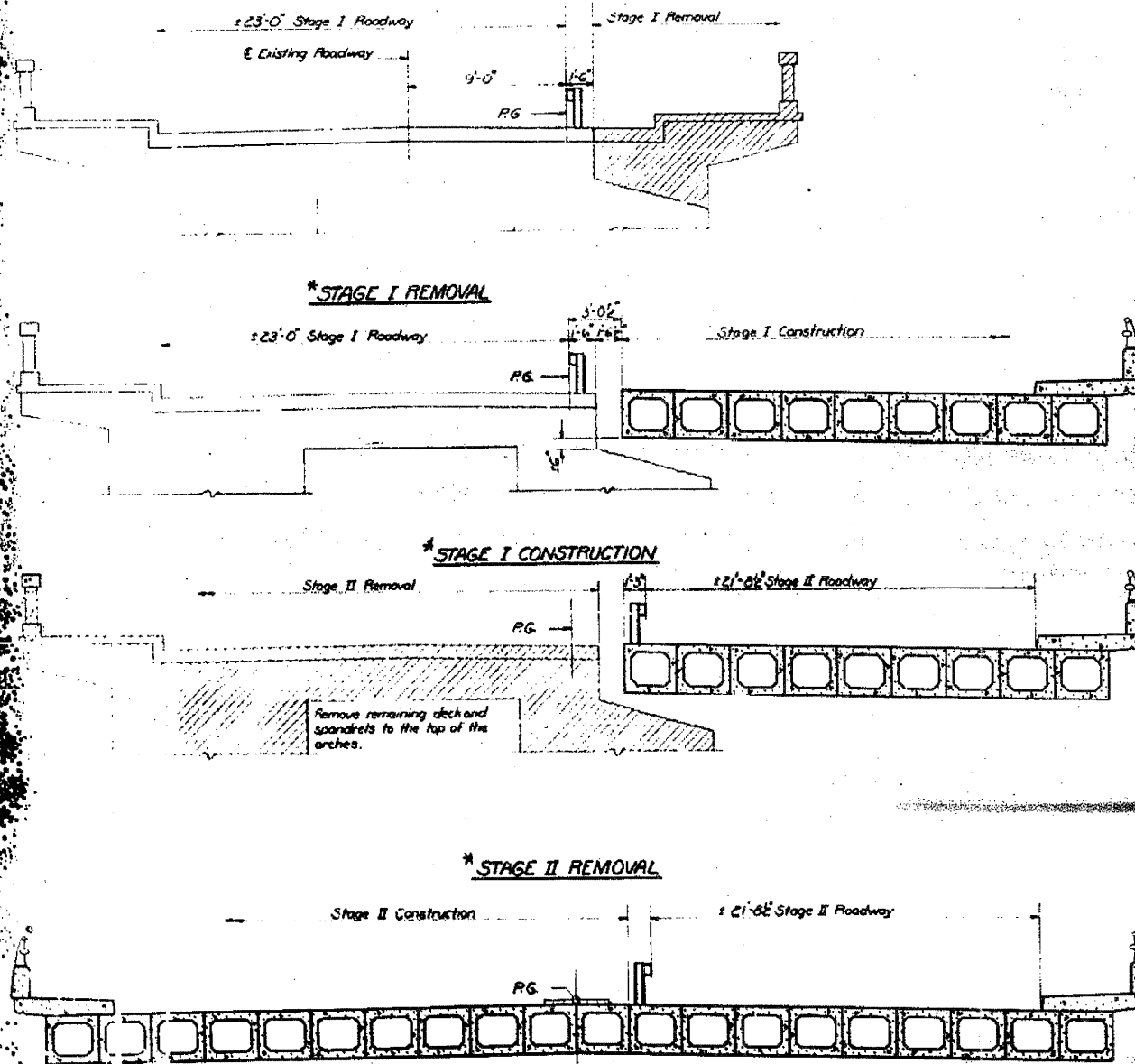


FOR INFORMATION ONLY

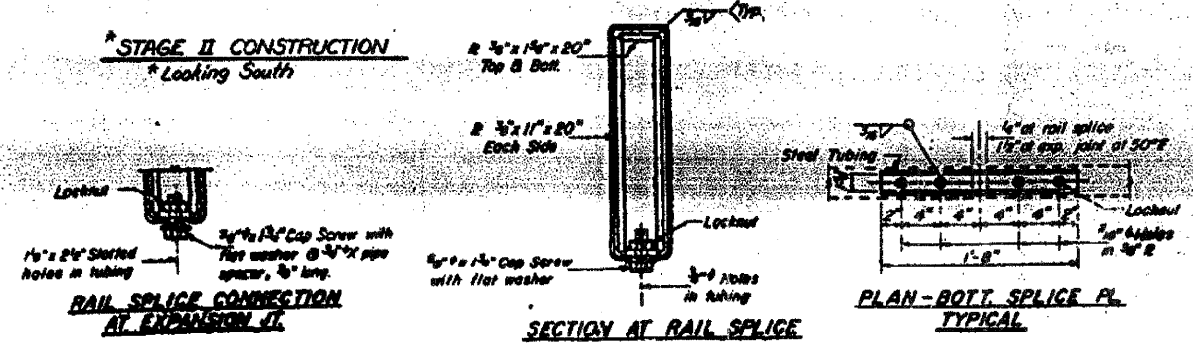
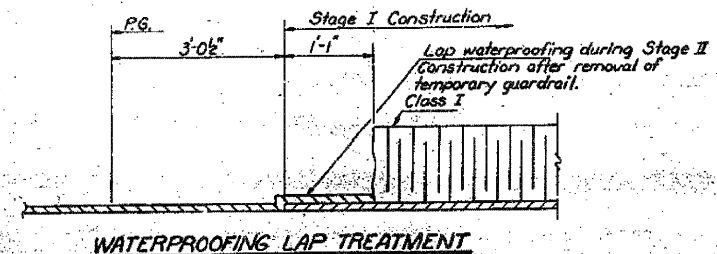
STATE OF ILLINOIS
DEPARTMENT OF TRANSPORTATION

DATE	REVISION	QUANTITY	TOTAL SHEETS	SHEET NO.
11-14-16	1BR-1	Whiteside	64	23

SHEET NO. 2
26 SHEETS



TEMPORARY BRIDGE RAIL
(See Special Provisions)



STAGE CONSTRUCTION
F.A. RT. 646 SEC. 1BR-1
WHITESIDE COUNTY
STATION 14+12.40

DESIGNED BY: KRULL
EXAMINED BY: [Signature]
DATE: 11/14/16
APPROVED: [Signature]