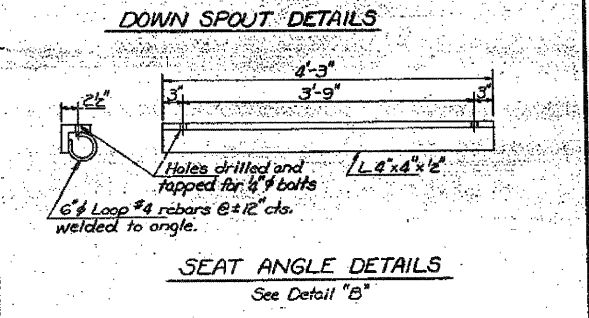
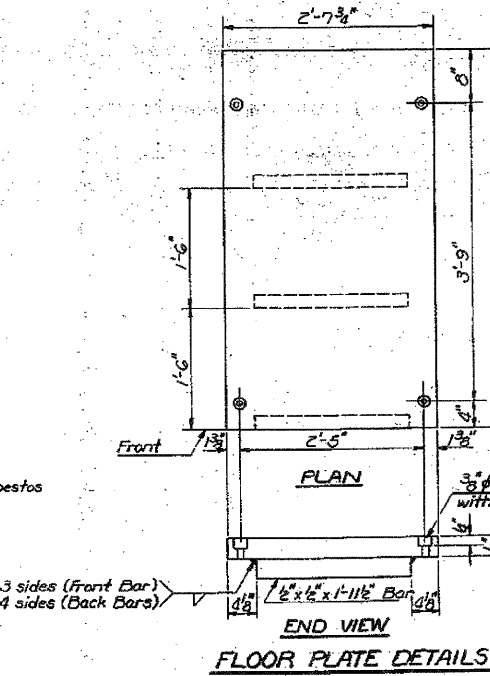
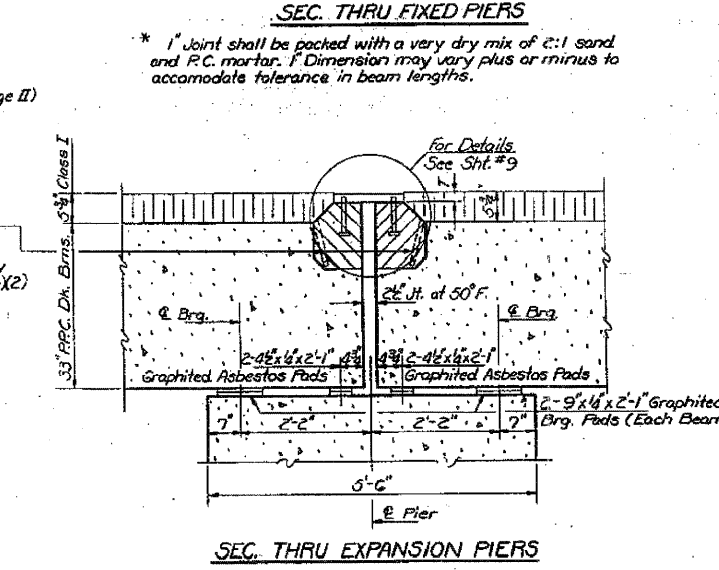
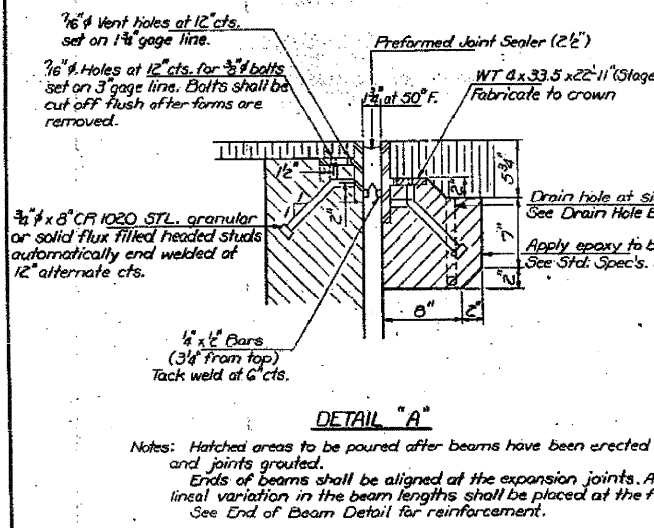
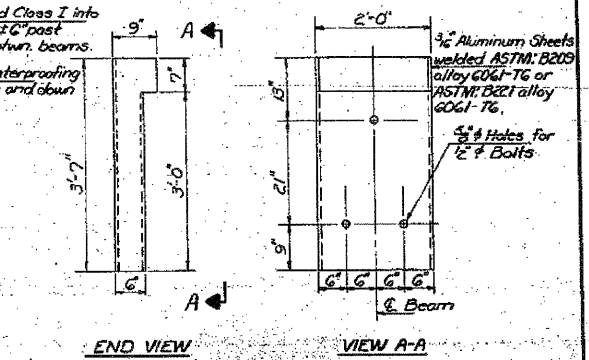
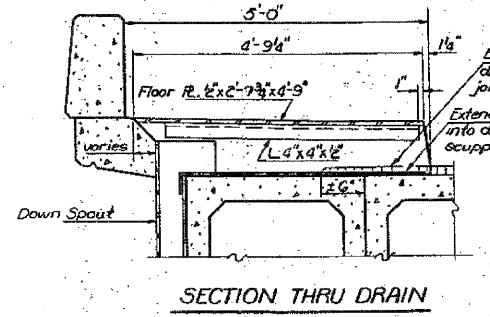
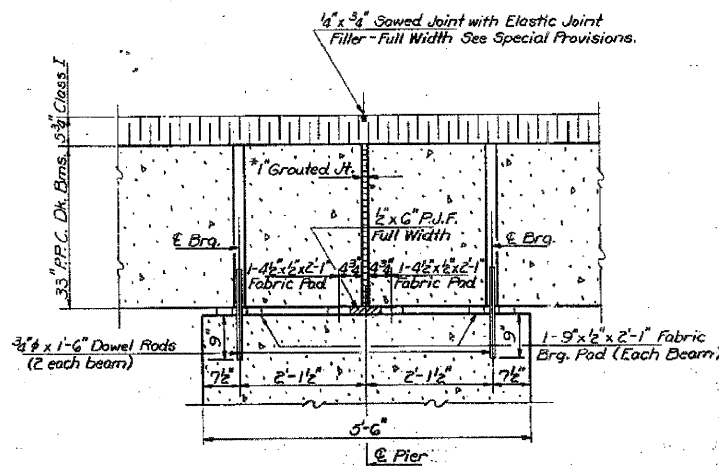
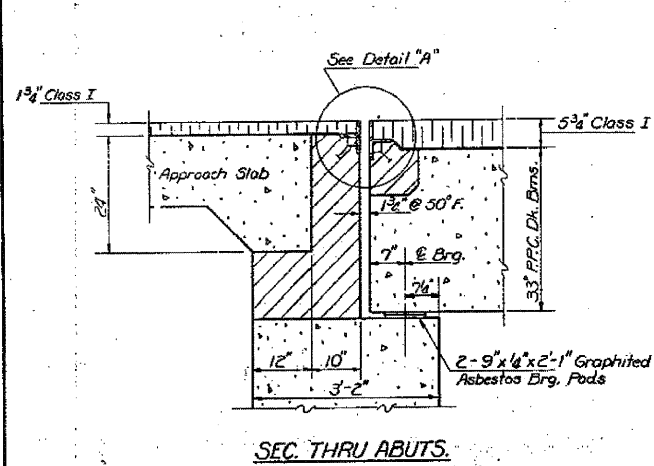


STATE OF ILLINOIS  
DEPARTMENT OF TRANSPORTATION

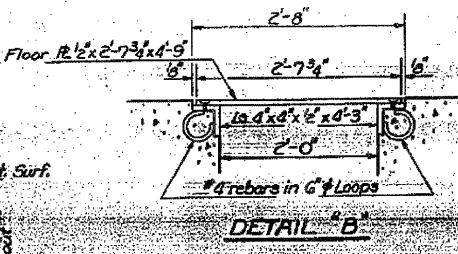
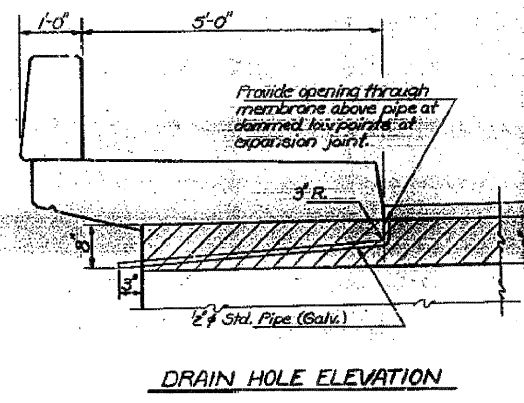
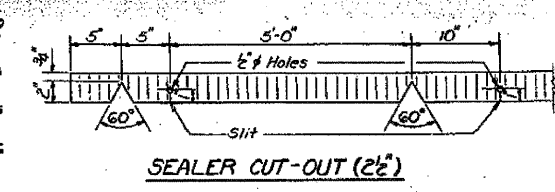
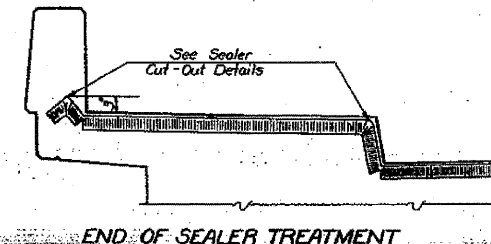
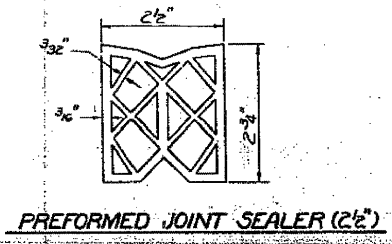
DATE	REVISION	BY	TOTAL SHEETS	SHEET NO.	SHEET NO.
1-2-64	1BR-1	Whiteside	64	26	26 SHEETS



**BILL OF MATERIAL**

Bar	No	Size	Length	Shape
a	36	#5	26'-10"	
a1	36	#5	32'-10"	
b	720	#5	30'-2"	
c	2068	#5	6'-2"	
d	2122	#8	3'-10"	L
d1	2122	#6	3'-0"	L
d2	488	#4	2'-7"	□
e	6	#4	1'-8"	
e1	30	#4	16'-4"	
e2	300	#4	16'-8"	
e3	390	#4	17'-0"	
e4	12	#4	23'-0"	

Class I Concrete (C16) (C21)  
Reinforcement Bars (R21) (R27)



DESIGNED DAN KRULL  
CHECKED M. J. RYAN  
DRAWN Joe Sutherland  
CHECKED M. J. R.

EXAMINED *Feb 27 1960*  
PASSED  
APPROVED

**SUPERSTRUCTURE DETAILS**  
FR. RT. C&G SEC. 1BR-1  
WHITESIDE COUNTY  
STATION 148+00