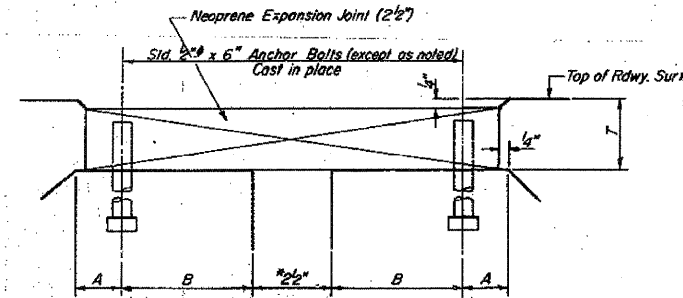


STATE OF ILLINOIS  
DEPARTMENT OF TRANSPORTATION

PROJECT NO.	SECTION	DATE	SCALE	SHEET NO.	TOTAL SHEETS
646	IBR-1	Whiteside	64	30	26 SHEETS

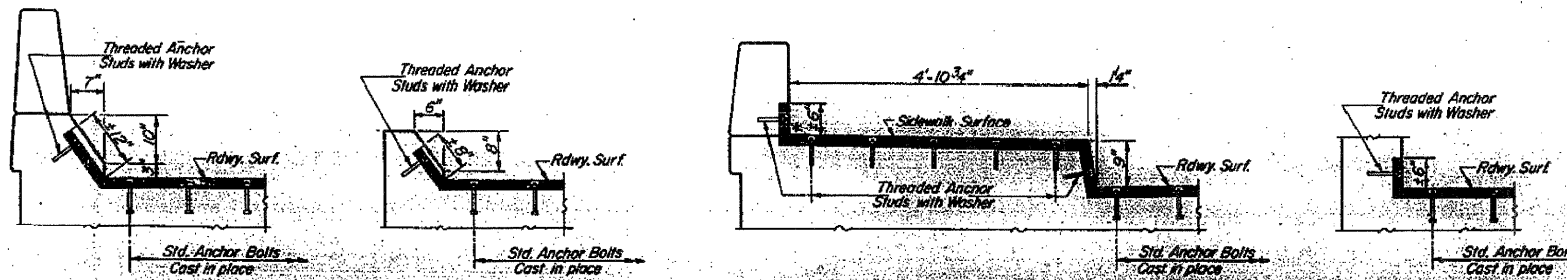
**ALTERNATE NEOPRENE EXPANSION JOINTS (2 1/2")**  
(See Special Provisions)

Model	Supplier	Blockout Dimensions
TRANSFLEX, MODEL 250 Use 5/8" x 6" Anchor Bolts.	General T. e. Company	T = 2 1/8", A = 1 1/2", B = 4 1/4"
WABOFLEX, MODEL SR 2.5 Use 5/8" x 6" Anchor Bolts.	Watson Bowman Associates, Inc.	T = 2 1/8", A = 1 1/2", B = 4 1/4"
FEL-SPAN, MODEL T-30 Set joint seal 1 5/8" at 50°F.	Fel-Pro Building Products Inc.	T = 1 3/4", A = 2 1/4", B = 2 9/16"
WABO ELASTODAM, TYPE 300 Set joint seal 1 5/8" at 50°F.	Watson Bowman Associates, Inc.	T = 1 3/4", A = 2 1/4", B = 2 9/16"
WABO ALU-STRIP, TYPE III S300 Set joint seal 1 1/2" at 50°F. Permitted for 0° skew only.	Watson Bowman Associates, Inc.	T = 1 3/4", A = 1 5/8", B = 2 1/2"
LOW PROFILE ONFLEX-25 Set joint seal 1 1/2" at 50°F. Roadway ball channel shall be filled with approved grout. Permitted for up to 30° skew.	Structural Accessories, Inc.	T = 1 3/4", A = 1 5/8", B = 2 1/2"



**CROSS SECTION**  
At 50°F  
Dimensions are at right angles.

**NOTE:**  
Joint openings shall be adjusted in accordance with Article 503.07(c) of the Std. Specs. when the deck is poured at an ambient temperature other than 50°F.



**TYPICAL END TREATMENTS**  
\*6" up to curb face, west face of curb and 10" to neoprene seal at face of right structural. See Sht # 6.

DESIGNED DAU KRULL	EXAMINED <i>[Signature]</i> 1980
CHECKED <i>[Signature]</i>	PASSED
DRAWN <i>[Signature]</i>	APPROVED
CHECKED <i>[Signature]</i>	DIRECTOR OF HIGHWAYS

EJ-2 2-10-77

**NEOPRENE EXPANSION JOINTS (2 1/2")**  
FOR EXPANSION LENGTH OF DECK = 80 IN. ± 1/8 IN.  
FA-RT-646-SEC-IBR-1  
WHITESIDE COUNTY  
STATION 14+12.40