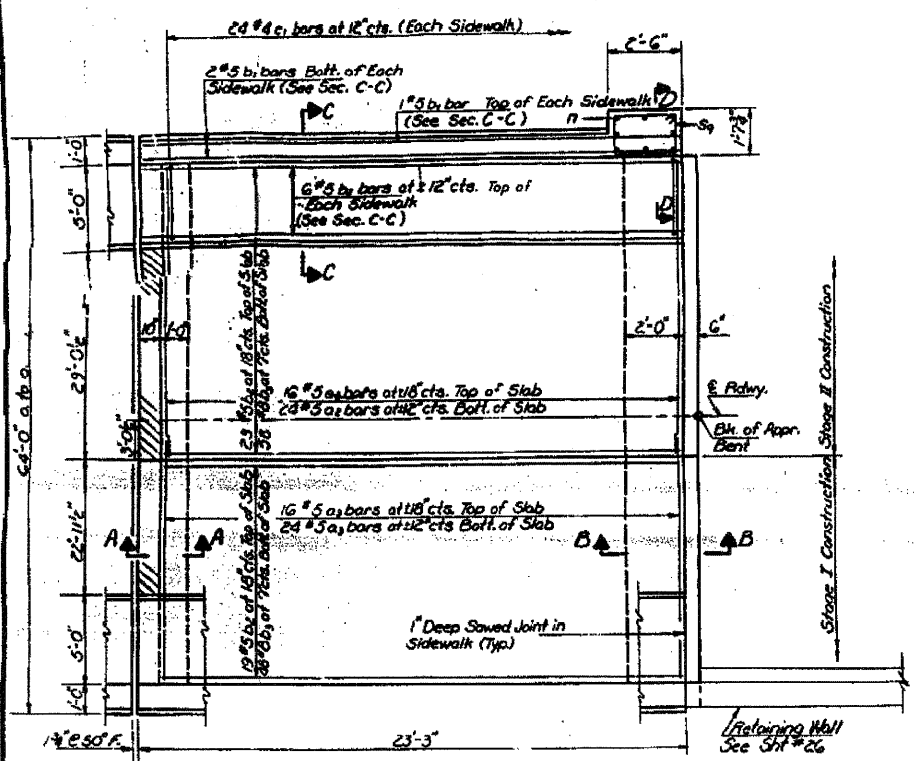


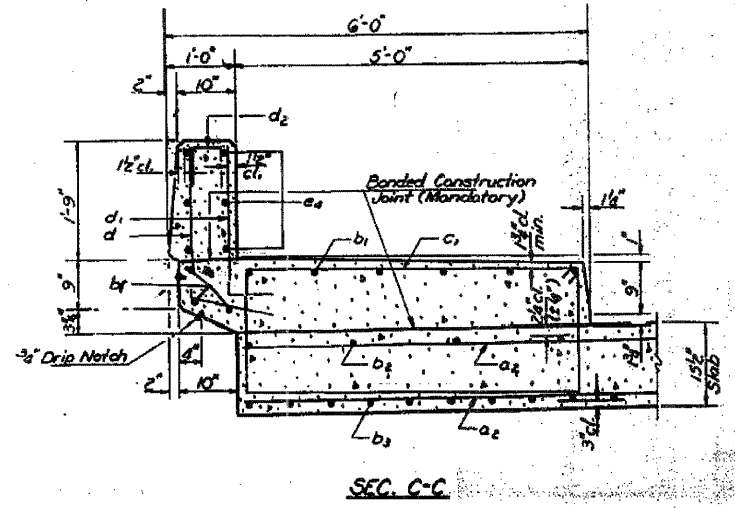
FOR INFORMATION ONLY

STATE OF ILLINOIS DEPARTMENT OF TRANSPORTATION

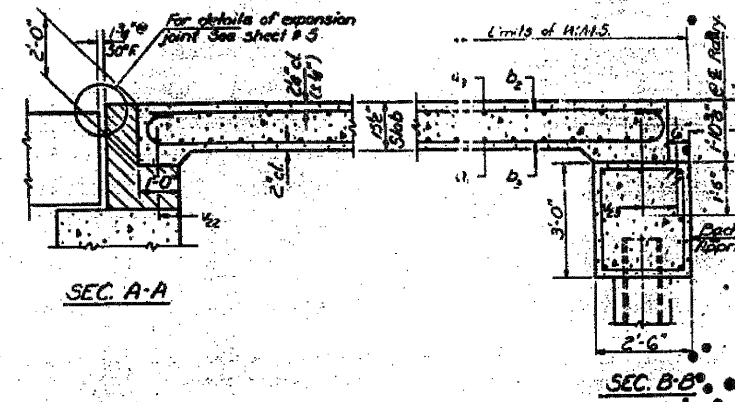
| | | | | |
|-------------|---------|--------------|-----------|--------------|
| PROJECT NO. | DATE | SCALE | SHEET NO. | TOTAL SHEETS |
| 18A-1 | 1/15/50 | 1/4" = 1'-0" | 64 | 32 |



PLAN

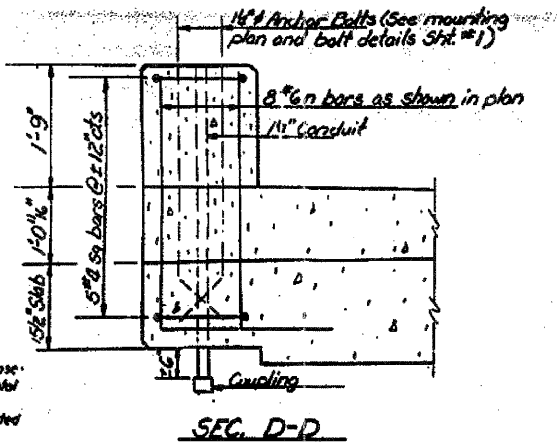


SEC. C-C

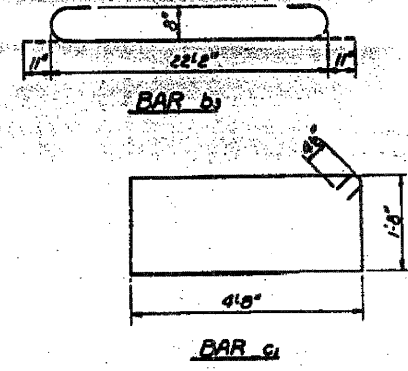


SEC. A-A

SEC. B-B

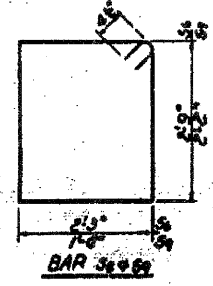


SEC. D-D



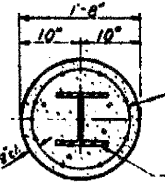
BAR b

BAR c



BAR 3a

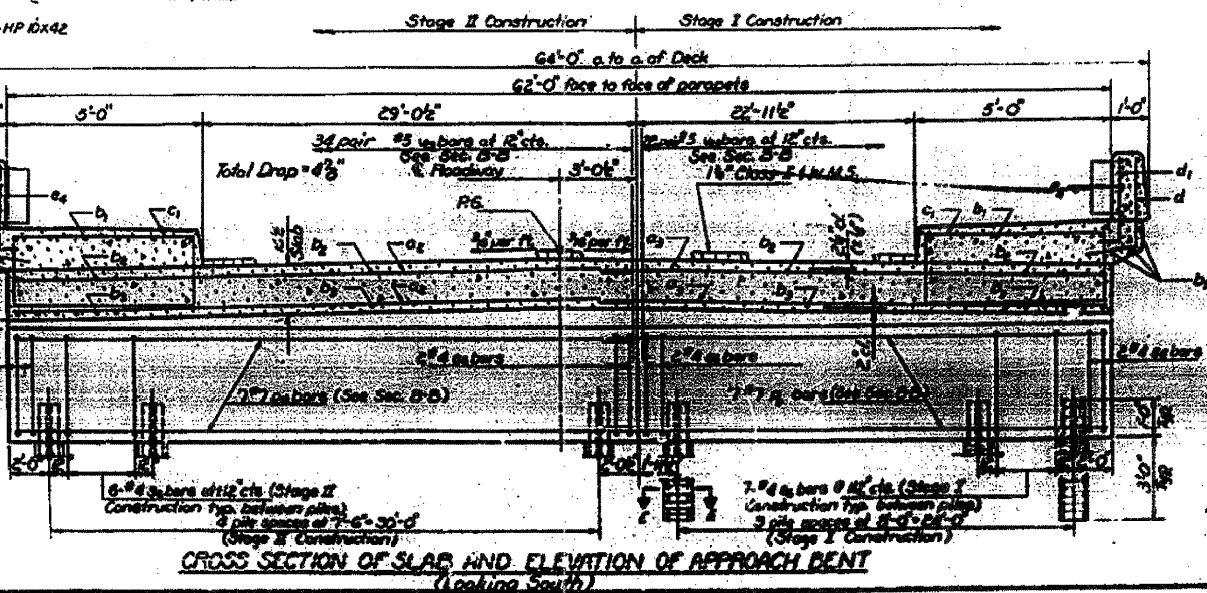
BAR n



SEC. E-E

PILE DATA

Type: Steel HP10x42
Capacity: Drive to Refusal
Est. Length: 26'
No. Required: 8 plus one test pile in a permanent location.



**CROSS SECTION OF SLAB AND ELEVATION OF APPROACH BENT
(Looking South)**

BILL OF MATERIAL

| Bar | No. | Size | Length |
|-----|-----|------|--------|
| a1 | 40 | #5 | 33'9" |
| a2 | 40 | #5 | 29'4" |
| b1 | 18 | #5 | 23'0" |
| b2 | 42 | #5 | 22'2" |
| b3 | 106 | #8 | 20'0" |
| c1 | 48 | #4 | 15'5" |
| n | 8 | #6 | 6'6" |
| pu | 7 | #7 | 29'4" |
| pn | 7 | #7 | 35'9" |
| 3a | 53 | #4 | 10'9" |
| 3b | 5 | #4 | 7'9" |
| vg | 124 | #5 | 2'6" |

Class I Concrete
Reinforcement Fabric
Steel Piles (HP10x42)
Pile Caps (HP10x42)
Parapet reinforcement and
Concrete is filled on sheet # 5
in detail with superstructure detail

DESIGNED: DAN KULL
CHECKED: M. J. R.
DRAWN: Joe Sutherland
CHECKED: M. J. R.

DATE: Feb 29 1950
BY: Joe Sutherland

**SOUTH APPROACH
LA. 18-116 SEC. 18A-1
WHITESIDE COUNTY
STATION 14+2.00**