

F.A.P. RTE.	SECTION	COUNTY	TOTAL SHEETS	SHEET NO.
742	38VBR-1	OGLE	87	1
		ILLINOIS	CONTRACT NO. 64D16	

**INDEX OF SHEETS**

- 1 COVER SHEET
- 2 - 3 GENERAL NOTES
- 4 - 7 SUMMARY OF QUANTITIES
- 8 - 11 TYPICAL SECTIONS
- 12 - 14 SCHEDULES OF QUANTITIES
- 16 - 17 HORIZONTAL AND VERTICAL CONTROL
- 18 - 19 PLAN AND PROFILE SHEETS
- 20 - 28 MAINTENANCE OF TRAFFIC
- 29 - 30 TEMPORARY PAVEMENT PLAN AND PROFILE
- 31 EROSION CONTROL PLANS
- 32 PAVEMENT MARKING PLANS
- 33 DRAINAGE PLAN AND PROFILE
- 34 - 35 RIGHT OF WAY DISTRICT DETAILS
- 36 - 38 41.1 TYPICAL PAVEMENT MARKINGS
- 39 92.1 DETAILS OF PLANTING AND BRACING TREES
- 40 39.2 INFORMATIONAL WARNING SIGNS (FOR NARROW TRAVEL LANES)
- 41 66.2 WITNESS MARKER FOR PERMANENT SURVEY MARKERS, TYPE II
- 41 75.2 ENTRANCE SIGN FOR USE WITH TEMPORARY SIGNALS
- 41 24.4 PAVEMENT BREAKING DETAIL
- 41 37.4 DELINEATOR AND POST ORIENTATION
- 42 50.4 TYPICAL BENCHING ON EXISTING EMBANKMENT
- 42 63.4 LAND SECTION & REFERENCE MARKERS
- 42 99.4 STOP LINE SIGN FOR TEMPORARY SIGNALS
- 43 - 61 CROSS SECTIONS
- 62 - 87 STRUCTURE PLANS

**STATE OF ILLINOIS**  
**DEPARTMENT OF TRANSPORTATION**  
**DIVISION OF HIGHWAYS**  
**PROPOSED**  
**HIGHWAY PLANS**

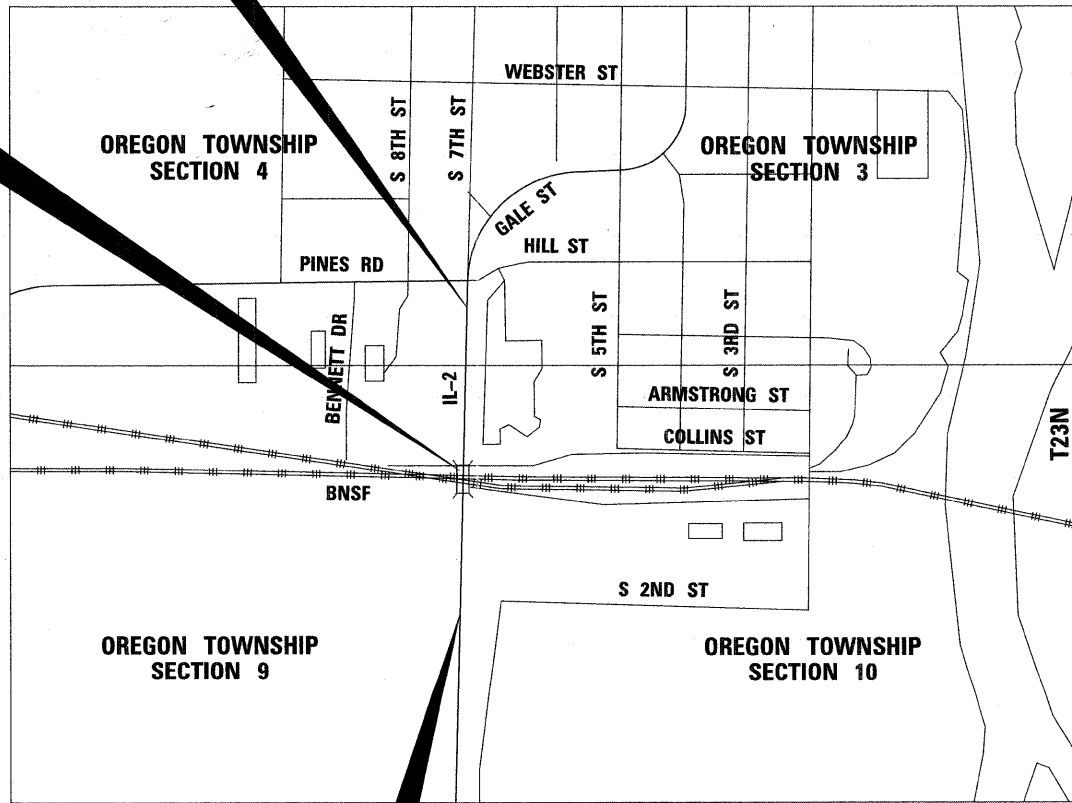
**FAP ROUTE 742 IL-2**  
**SECTION 38VBR-1**  
**PROJECT: ACF-0742(134)**  
**BRIDGE REPLACEMENT**  
**OGLE COUNTY**

FOR LIST OF HIGHWAY STANDARDS, SEE SHEET NO. 2

**SECTION ENDS STA. 522 + 89.66**  
**IMPROVEMENT ENDS STA. 528 + 00.00**  
**(IL-2)**

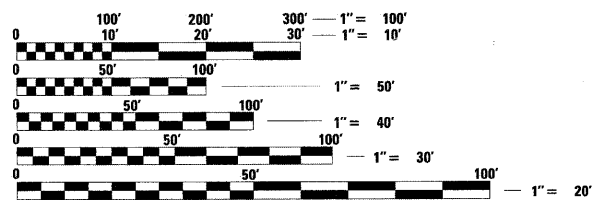
C-92-078-07

**BRIDGE REPLACEMENT**  
**STA. 514 + 74.37**  
**EXISTING STRUCTURE #071-0026**  
**PROPOSED STRUCTURE #071-0097**



**SECTION BEGINS STA. 504 + 51.23**  
**IMPROVEMENT BEGINS 504 + 00.00**  
**(IL-2)**

GROSS LENGTH = 1838.43 FT. = 0.348 MILE  
NET LENGTH = 1833.43 FT. = 0.348 MILE



FULL SIZE PLANS HAVE BEEN PREPARED USING STANDARD ENGINEERING SCALES. REDUCED SIZED PLANS WILL NOT CONFORM TO STANDARD SCALES. IN MAKING MEASUREMENTS ON REDUCED PLANS, THE ABOVE SCALES MAY BE USED.

J.U.L.I.E.  
JOINT UTILITY LOCATION INFORMATION FOR EXCAVATION  
1-800-892-0123  
OR 811

**PROJECT ENGINEER: MASOOD AHMAD**  
**PROJECT MANAGER: GIANCARLO GIERBOLINI (815) 284-5933**  
**HW LOCHNER: COLLEEN MALONE (312) 372-3011**  
**CONTRACT NO. 64D16 F.A.P. 742 (IL 2) SECTION 38VBR-1 OGLE COUNTY**

LOCATION MAP NOT TO SCALE



LOCATION OF SECTION INDICATED THUS: [black rectangle]



Andrew K. Kassey 8/18/11  
SHEETS 1-81



Colleen Malone  
SHEETS 62-80, 83-87



Shulamit Kamaal 8/18/11  
SHEETS 81-82

**FUNCTIONAL CLASSIFICATION**  
**MINOR ARTERIAL**  
**2031 ADT - 8650**  
**P.V. = 91.0% S.U. = 3.2% M.U. = 5.8%**

STATE OF ILLINOIS  
DEPARTMENT OF TRANSPORTATION  
DIVISION OF HIGHWAYS

SUBMITTED August 19, 2011

Eric S. J. Hill  
DEPUTY DIRECTOR OF HIGHWAYS, REGION ENGINEER

October 14, 2011  
Scott E. Stett, P.E.  
Acting ENGINEER OF DESIGN AND ENVIRONMENT

October 14, 2011  
Christine M. Reed  
DIRECTOR OF HIGHWAYS, CHIEF ENGINEER

**LOCHNER**  
H.W. LOCHNER, INC.  
CONSULTING ENGINEERS & PLANNERS  
20 NORTH WACKER DRIVE SUITE 1200  
CHICAGO, IL 60606

**PRINTED BY THE AUTHORITY OF THE STATE OF ILLINOIS**