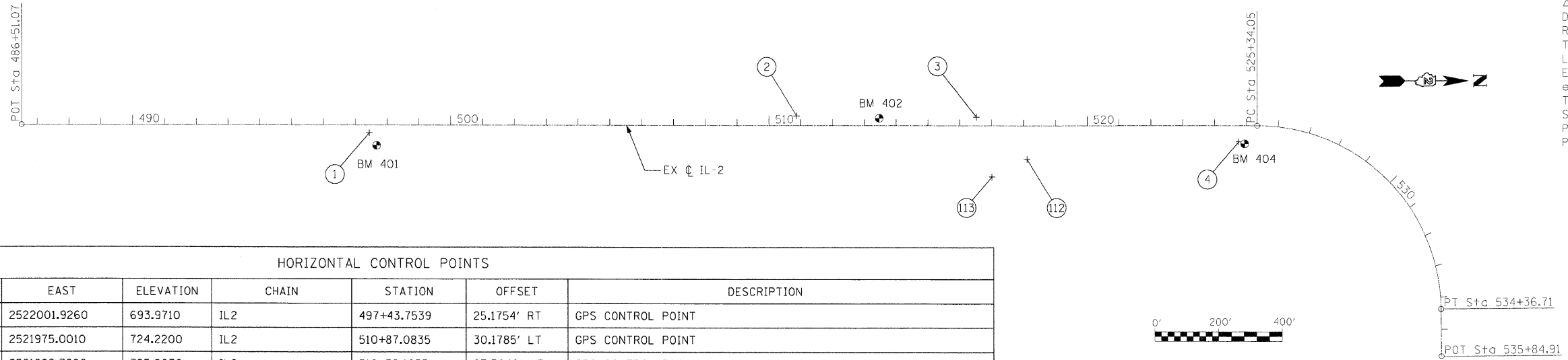


HORIZONTAL & VERTICAL CONTROL



EXIST. CURVE 67
 PI STA. = 531+06.75
 $\Delta = 89^\circ 27' 47''$ (RT)
 $D = 9^\circ 54' 40''$
 $R = 578.10'$
 $T = 572.71'$
 $L = 902.66'$
 $E = 235.65'$
 $e =$
 $T.R. =$
 $S.E. RUN =$
 $P.C. STA. = 525+34.05$
 $P.T. STA. = 534+36.71$

HORIZONTAL CONTROL POINTS							
POINT	NORTH	EAST	ELEVATION	CHAIN	STATION	OFFSET	DESCRIPTION
1	1942417.9610	2522001.9260	693.9710	IL2	497+43.7539	25.1754' RT	GPS CONTROL POINT
2	1943762.1610	2521975.0010	724.2200	IL2	510+87.0835	30.1785' LT	GPS CONTROL POINT
3	1944327.0570	2521989.7680	725.8030	IL2	516+52.1655	27.3646' LT	GPS CONTROL POINT
4	1945149.9190	2522085.2450	700.9540	IL2	524+76.8631	50.6844' RT	GPS CONTROL POINT

APPARENT PROPERTY CORNERS							
POINT	NORTH	EAST	ELEVATION	CHAIN	STATION	OFFSET	DESCRIPTION
700	1942281.3780	2522031.8340	694.5590	IL2	496+07.8341	57.9660' RT	CONCRETE TIE WITNESS CORNER
701	1942341.7810	2522032.8290	693.7360	IL2	496+68.2446	57.6830' RT	CONCRETE TIE WITNESS CORNER
702	1942336.0530	2521996.7260	694.9230	IL2	496+61.7542	21.7093' RT	SECTION CORNER
703	1942283.6090	2521908.8690	694.8200	IL2	496+07.4634	65.0187' LT	CONCRETE TIE WITNESS CORNER
704	1944560.1780	2521952.3110	712.7560	IL2	518+84.4420	69.7446' LT	RIGHT OF WAY MARKER
705	1944331.3350	2522097.1110	706.5960	IL2	516+58.7132	79.8639' RT	RIGHT OF WAY MARKER

