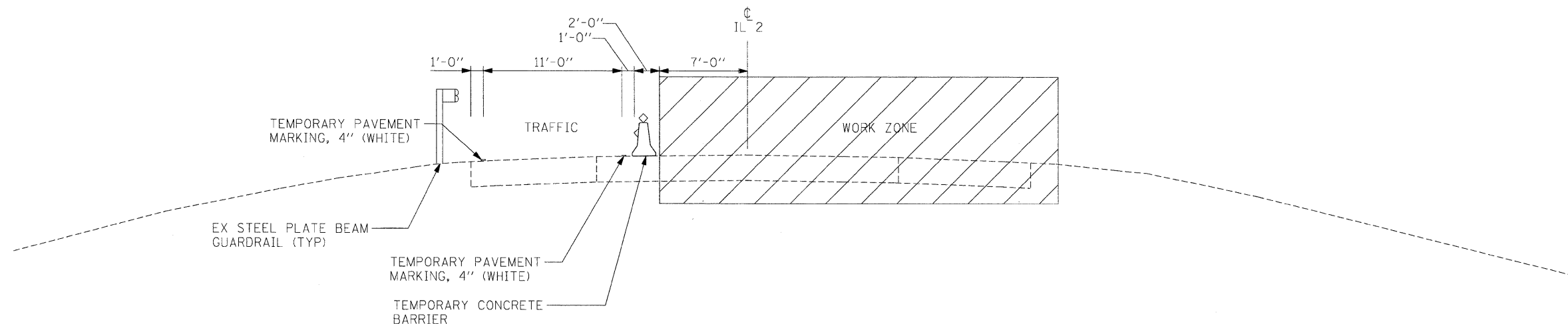
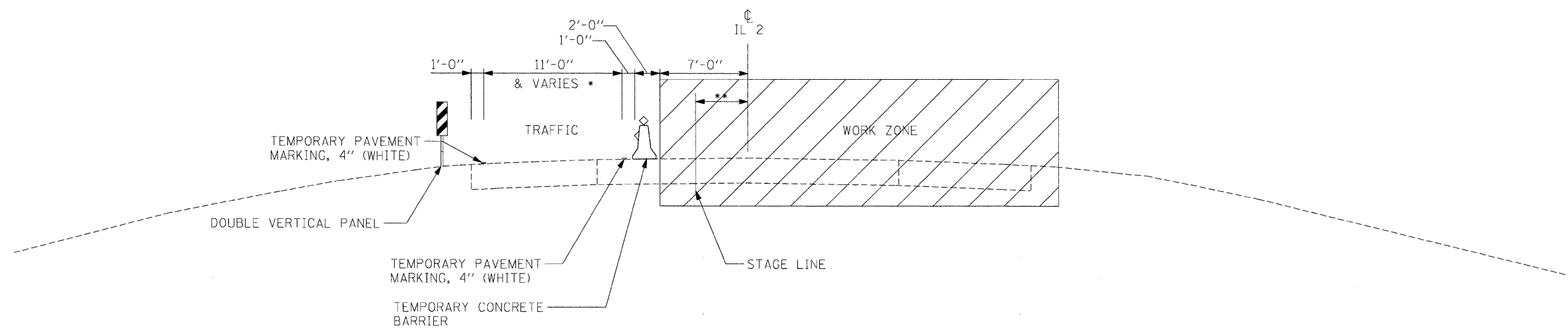


# TYPICAL MOT SECTIONS



MOT TYPICAL SECTION  
 STAGE 1A - STA 515+75 TO STA 518+75  
 STAGE 2A - STA 511+00 TO STA 513+47



MOT TYPICAL SECTION  
 STAGE 1A - STA 518+75 TO STA 523+83.80  
 STAGE 2A - STA 507+50 TO STA 511+00

\* STAGE 1A ONLY - VARIES 11' - 22'  
 STA 520+86.33 TO STA 522+18.33

\*\* VARIES SEE STAGE 1A MOT PLANS

**NOTE:**

CURB AND GUTTER FROM 520+00 TO 522+50 IS NOT TO BE INSTALLED UNTIL AFTER THE COMPLETION OF STAGE 3B

FILE NAME =	USER NAME = _USER_	DESIGNED - MTM	REVISED -	<b>STATE OF ILLINOIS DEPARTMENT OF TRANSPORTATION</b>	<b>IL 2 OVER THE BNSF RAILROAD TYPICAL MOT SECTIONS</b>		F.A.P. RTE.	SECTION	COUNTY	TOTAL SHEETS	SHEET NO.
ts\5015-phases\1-2&l-26\civil\IL-2\CADD	Sheets\0264016-sh1-MOT_typical.dgn	DRAWN - MTM	REVISED -		742	38VBR-1	OGLE	87	20		
	PLOT SCALE = #SCALE#	CHECKED - KK	REVISED -		CONTRACT NO. 64D16						
	PLOT DATE = 8/18/2011	DATE - 8/2/2011	REVISED -		SCALE:	SHEET NO. 20 OF 87 SHEETS	STA. TO STA.	FED. ROAD DIST. NO.	ILLINOIS FED. AID PROJECT		