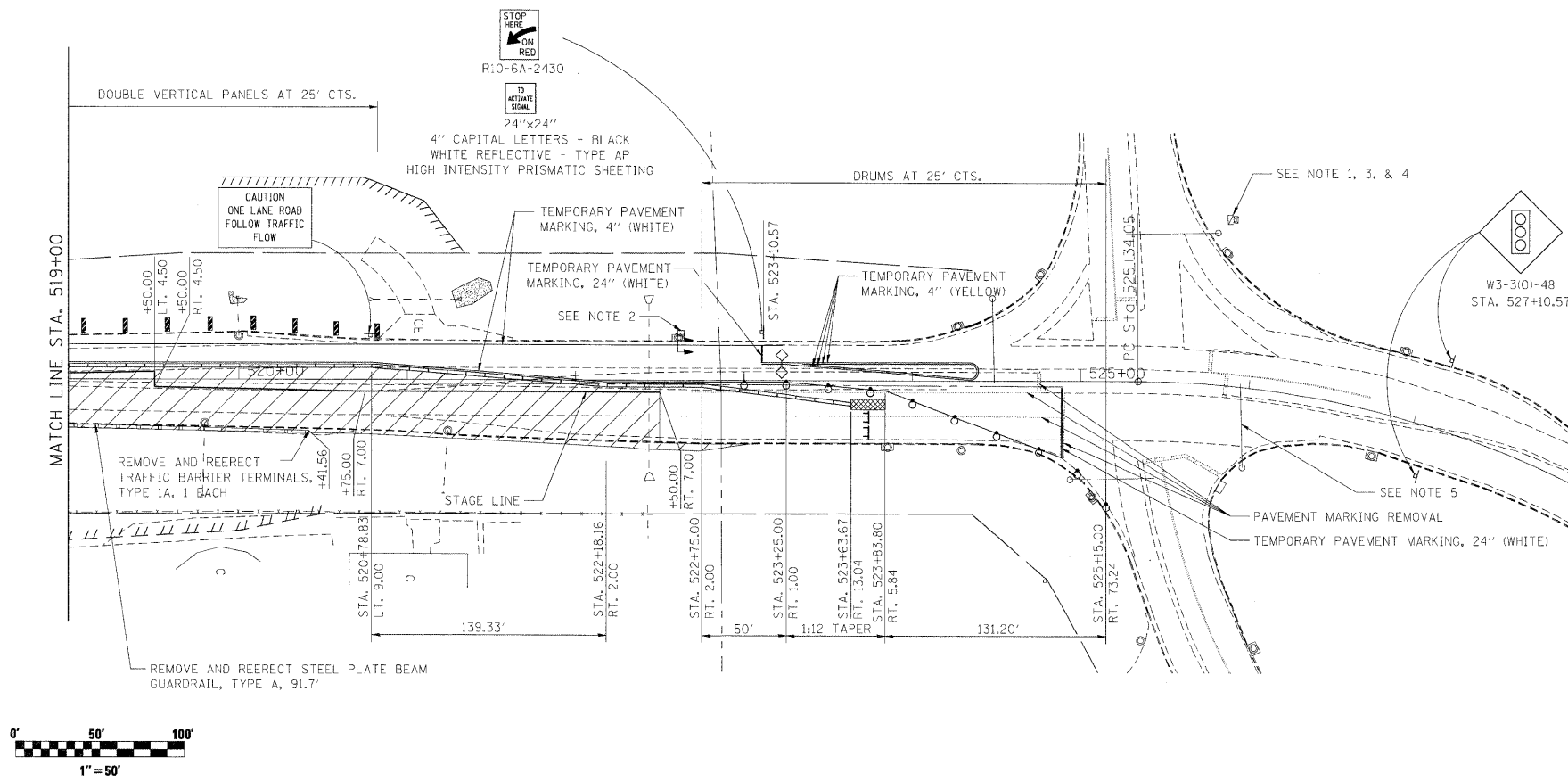
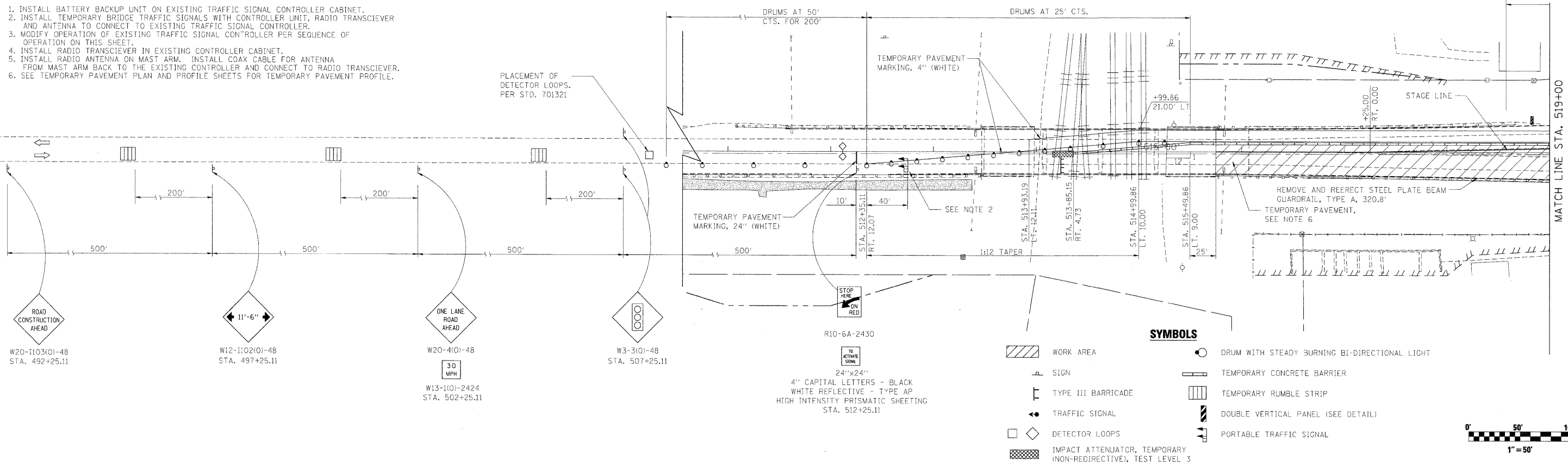


**NOTE:**

1. INSTALL BATTERY BACKUP UNIT ON EXISTING TRAFFIC SIGNAL CONTROLLER CABINET.
2. INSTALL TEMPORARY BRIDGE TRAFFIC SIGNALS WITH CONTROLLER UNIT, RADIO TRANSCIEVER AND ANTENNA TO CONNECT TO EXISTING TRAFFIC SIGNAL CONTROLLER.
3. MODIFY OPERATION OF EXISTING TRAFFIC SIGNAL CONTROLLER PER SEQUENCE OF OPERATION ON THIS SHEET.
4. INSTALL RADIO TRANSCIEVER IN EXISTING CONTROLLER CABINET.
5. INSTALL RADIO ANTENNA ON MAST ARM. INSTALL COAX CABLE FOR ANTENNA FROM MAST ARM BACK TO THE EXISTING CONTROLLER AND CONNECT TO RADIO TRANSCIEVER.
6. SEE TEMPORARY PAVEMENT PLAN AND PROFILE SHEETS FOR TEMPORARY PAVEMENT PROFILE.



**TEMPORARY SIGNAL PHASING**

Movement - IL-2 at Hill	↑ N	↓ 6	7 →	8 ←	↑ 5									
Movement - Portable Signals	↑ N	↓ 6	7 →	8 ←	↑ 5									
Phase	6		7		8									
Interval	1	2A	2B	3	3A	4A	4B	5	5A	5B	6	6A	7	7A
Change to	7		8		5		6		7		8		5	
Northbound IL-2 at Hill/Pines - Phase 5	NB	R	R	R	R	R	R	R	R	R	G	G	Y	R
Southbound IL-2 at Hill/Pines - Phase 6	SB	G	Y	R	R	R	R	R	R	R	R	R	R	R
Eastbound Pines at IL-2 at Hill/Pines - Phase	EB	R	R	R	G	G	Y	R	R	R	R	R	R	R
Westbound Hill at IL-2 at Hill/Pines - Phase	WB	R	R	R	R	R	R	G	Y	R	R	R	R	R
Portable Signal on North end of MOT Section	SB	G	G	Y	Y	R	R	R	R	R	R	R	R	R
Portable Signal on South end of MOT Section	NB	R	R	R	R	R	R	G	G	G	Y	R	R	R
Timings (seconds)		30	3.5	2	3.5	30	3.5	2	30	3.5	2	3.5	30	3.5