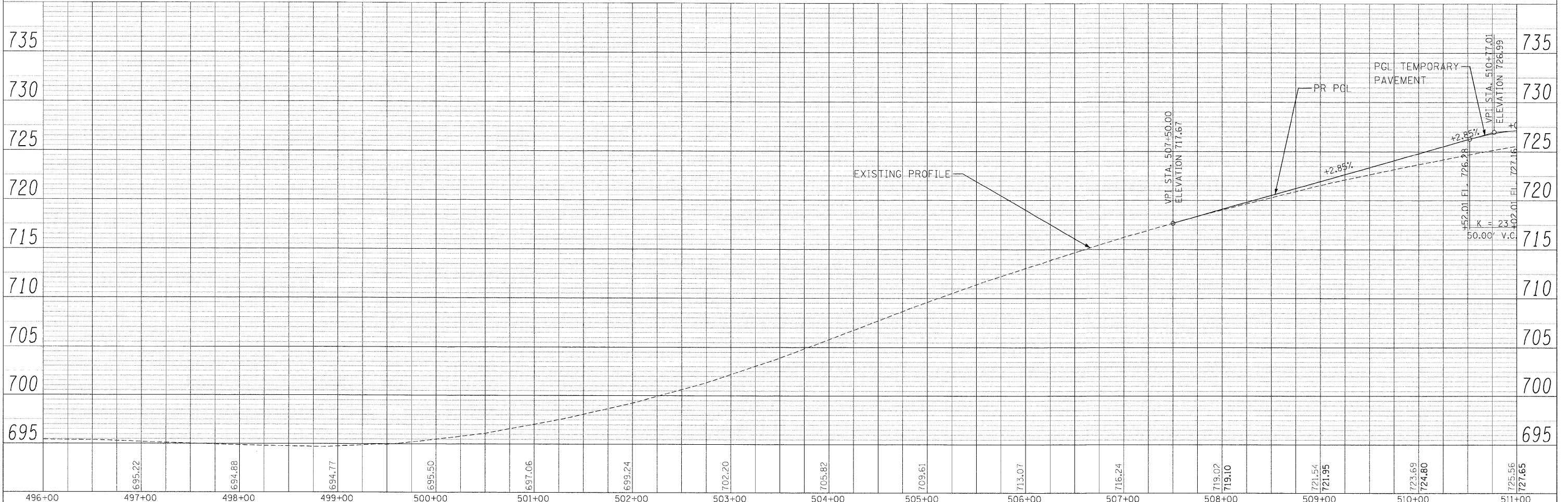
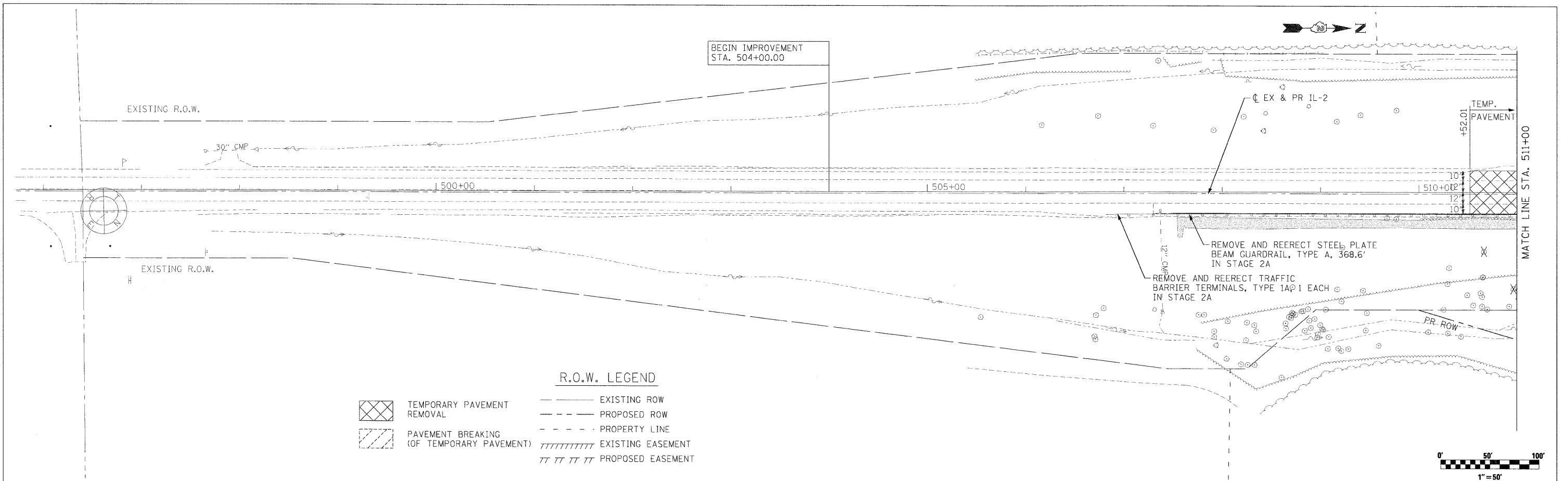


DATE	
BY	
NO. 1	
NO. 2	
NO. 3	
NO. 4	
NO. 5	
NO. 6	
NO. 7	
NO. 8	
NO. 9	
NO. 10	
NO. 11	
NO. 12	
NO. 13	
NO. 14	
NO. 15	
NO. 16	
NO. 17	
NO. 18	
NO. 19	
NO. 20	
NO. 21	
NO. 22	
NO. 23	
NO. 24	
NO. 25	
NO. 26	
NO. 27	
NO. 28	
NO. 29	
NO. 30	
NO. 31	
NO. 32	
NO. 33	
NO. 34	
NO. 35	
NO. 36	
NO. 37	
NO. 38	
NO. 39	
NO. 40	
NO. 41	
NO. 42	
NO. 43	
NO. 44	
NO. 45	
NO. 46	
NO. 47	
NO. 48	
NO. 49	
NO. 50	

DATE	
BY	
NO. 1	
NO. 2	
NO. 3	
NO. 4	
NO. 5	
NO. 6	
NO. 7	
NO. 8	
NO. 9	
NO. 10	
NO. 11	
NO. 12	
NO. 13	
NO. 14	
NO. 15	
NO. 16	
NO. 17	
NO. 18	
NO. 19	
NO. 20	
NO. 21	
NO. 22	
NO. 23	
NO. 24	
NO. 25	
NO. 26	
NO. 27	
NO. 28	
NO. 29	
NO. 30	
NO. 31	
NO. 32	
NO. 33	
NO. 34	
NO. 35	
NO. 36	
NO. 37	
NO. 38	
NO. 39	
NO. 40	
NO. 41	
NO. 42	
NO. 43	
NO. 44	
NO. 45	
NO. 46	
NO. 47	
NO. 48	
NO. 49	
NO. 50	



FILE NAME =	USER NAME = .USER.	DESIGNED - KB	REVISED -
\\5015-phase11-26\1-26\civil\11-2\400 sheets\0264016-sh1-TempPvmPP.dgn		DRAWN - KB	REVISED -
PLOT SCALE = #SCALE#		CHECKED - KK	REVISED -
PLOT DATE = 8/18/2011		DATE - 8/2/2011	REVISED -

**STATE OF ILLINOIS
DEPARTMENT OF TRANSPORTATION**

**IL-2 OVER THE BNSF RAILROAD
TEMPORARY PAVEMENT PLAN AND PROFILE**

SCALE: 1" = 50' SHEET NO. 29 OF 87 SHEETS STA. 507+50 TO STA. 511+00

F.A.P. RTE.	SECTION	COUNTY	TOTAL SHEETS	SHEET NO.
742	38VBR-1	OGLE	87	29
SCALE: HORIZ. 1"=50' VERT. 1"=5'		CONTRACT NO. 64D16		
FED. ROAD DIST. NO.		ILLINOIS FED. AID PROJECT		