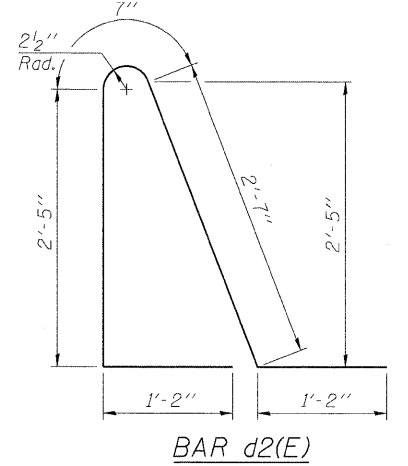
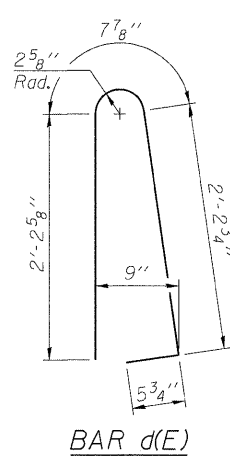
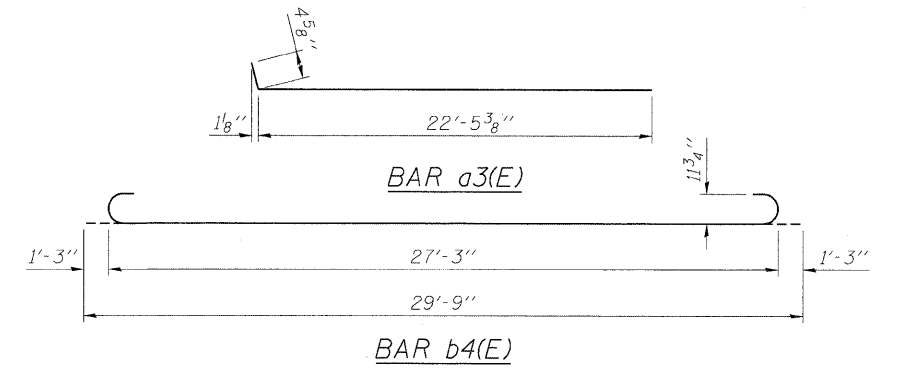


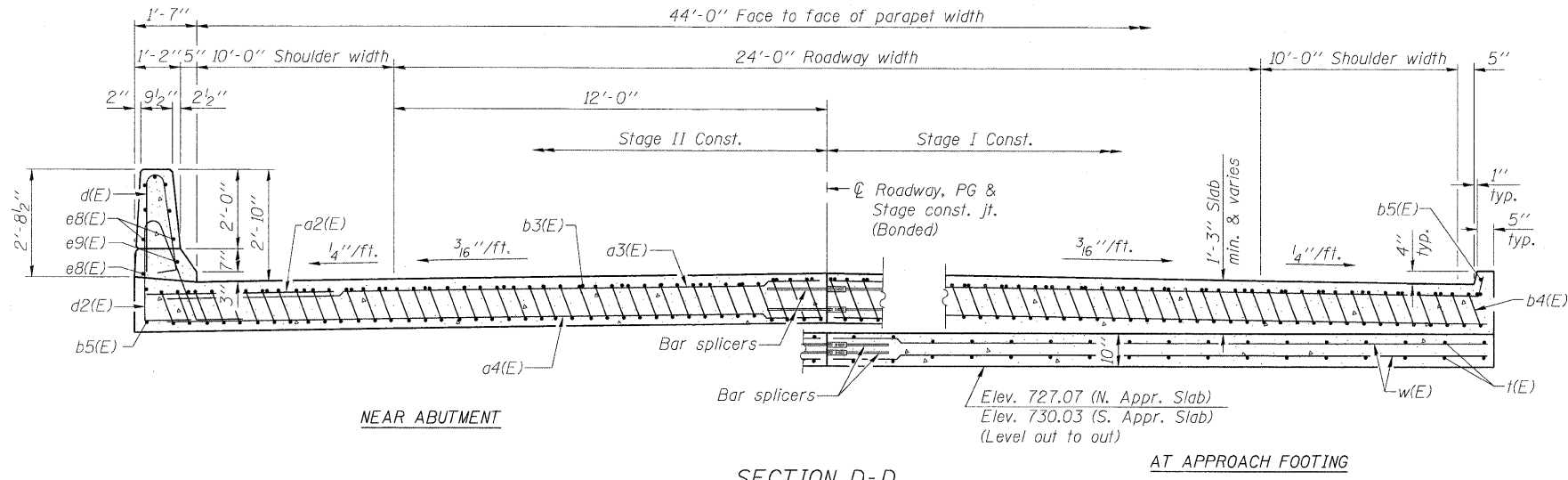
SECTION C-C

\* Tilt #9 b4(E) bars as required to maintain clearance.  
 \*\*\* Cost included with Concrete Superstructure.



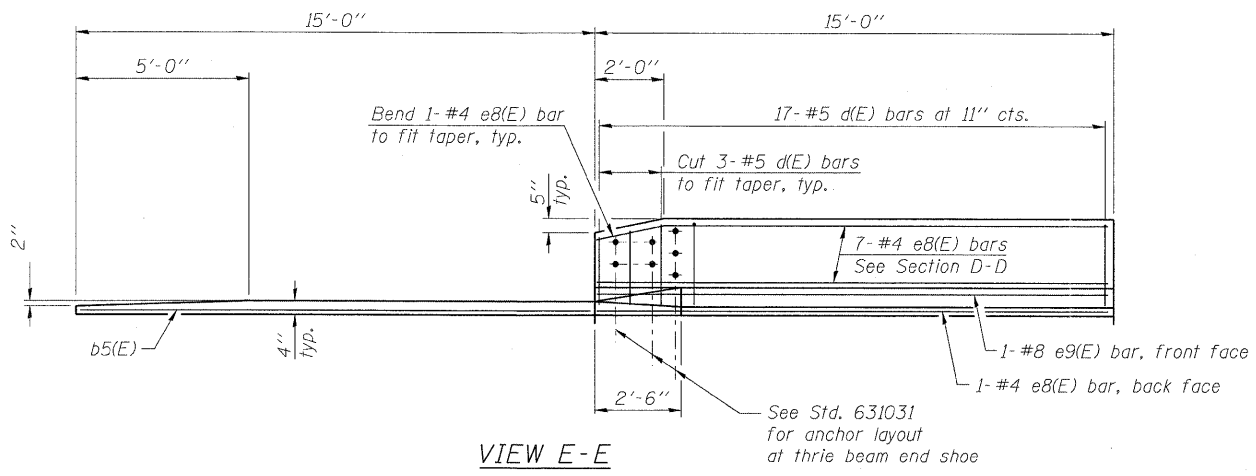
TWO APPROACHES  
BILL OF MATERIAL

Bar	No.	Size	Length	Shape
a2(E)	48	#6	6'-6"	—
a3(E)	100	#4	22'-10"	—
a4(E)	184	#5	22'-7"	—
b3(E)	76	#4	29'-8"	—
b4(E)	216	#9	29'-9"	—
b5(E)	8	#4	14'-8"	—
d(E)	68	#5	5'-7"	—
d2(E)	68	#5	7'-11"	—
e8(E)	32	#4	14'-8"	—
e9(E)	4	#8	14'-8"	—
f(E)	192	#4	9'-8"	—
w(E)	160	#5	22'-7"	—
Concrete Superstructure		Cu. Yd.	141.1	
Concrete Structures		Cu. Yd.	28.3	
Reinforcement Bars, Epoxy Coated		Pound	36,200	



SECTION D-D

(See Plan for dimensions not shown)



VIEW E-E

NOTES

- See sheet 13 of 26 for Detail A and View B-B.
- Approach slab and parapet concrete shall be paid for as Concrete Superstructure.
- Approach footing concrete shall be paid for as Concrete Structures.
- Reinforcement shall be paid for as Reinforcement Bars, Epoxy Coated.
- For integral abutment bar splicers (E) and v(E) bar details, see sheet 11 of 26.
- The approach footing maximum applied service bearing pressure (Qmax) = 2.0 ksf.
- For bar splicer details, see sheet 23 of 26.
- Cost of excavation for approach footing included with Concrete Structures.
- For Porous Granular Embankment (Special) and drainage treatment details, see sheet 2 of 26.
- For additional parapet details, see sheet 12 of 26.

T:\5015\Phase1\11-2811-26\Struct\Drawn\12.dgn, 07/28/97, 6:01:44 AM, 4/4/98, 2.dgn

**LOCHNER**  
 H.W. LOCHNER, INC.  
 CONSULTING ENGINEERS AND PLANNERS  
 20 N. WACKER DRIVE, SUITE 1200  
 CHICAGO, ILLINOIS 60606

USER NAME =	DESIGNED - GWS	REVISED -
FILE NAME = 0710297-64D16-014-AS2.dgn	CHECKED - LJB	REVISED -
PLOT SCALE =	DRAWN - EF	REVISED -
PLOT DATE =	CHECKED - LJB	REVISED -

STATE OF ILLINOIS  
DEPARTMENT OF TRANSPORTATION

BRIDGE APPROACH SLAB DETAILS II  
STRUCTURE NO. 071-0097

SHEET NO. 14 OF 26 SHEETS

F.A.P. RTE. 742	SECTION 38VBR-1	COUNTY OGLE	TOTAL SHEETS 87	SHEET NO. 75
CONTRACT NO. 64D16				
ILLINOIS FED. AID PROJECT				