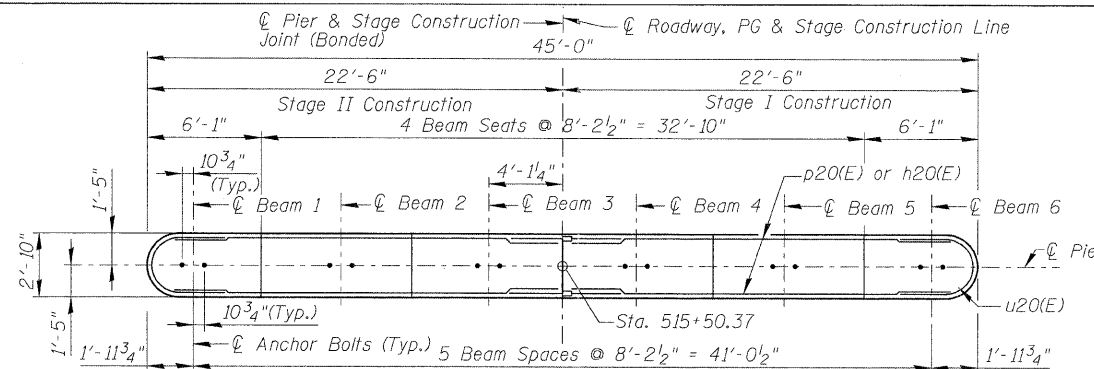
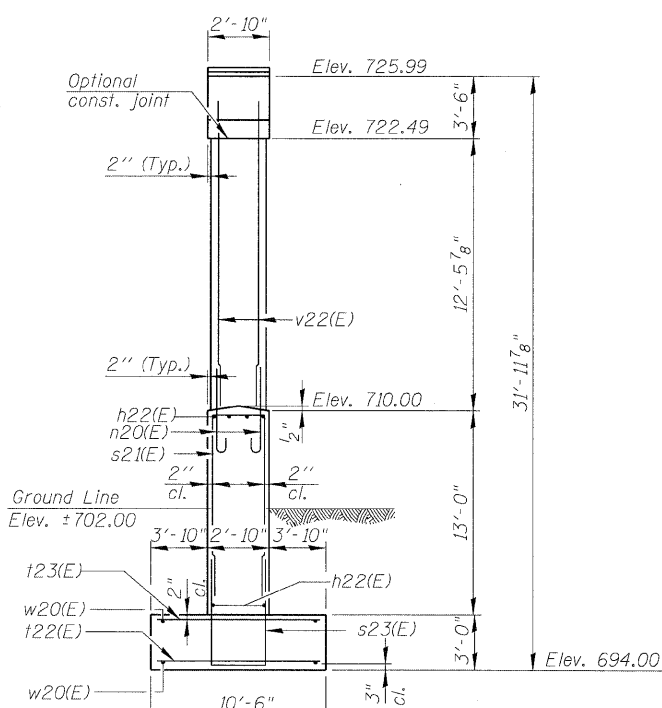


NOTES:

1. Space reinforcement in cap to miss anchor bolts.
2. Pour steps monolithically with cap.
3. For details of bar splicers see Sheet 23 of 26.

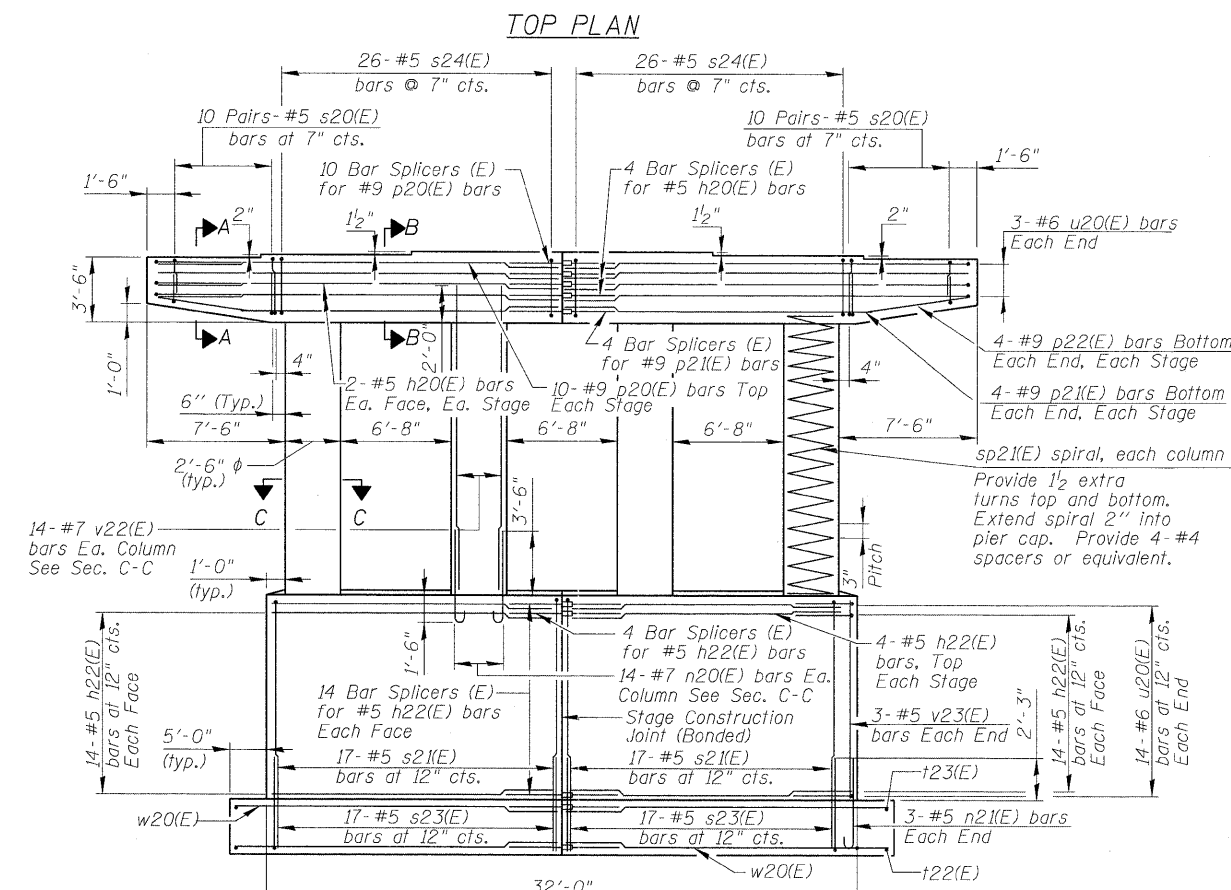


TOP PLAN



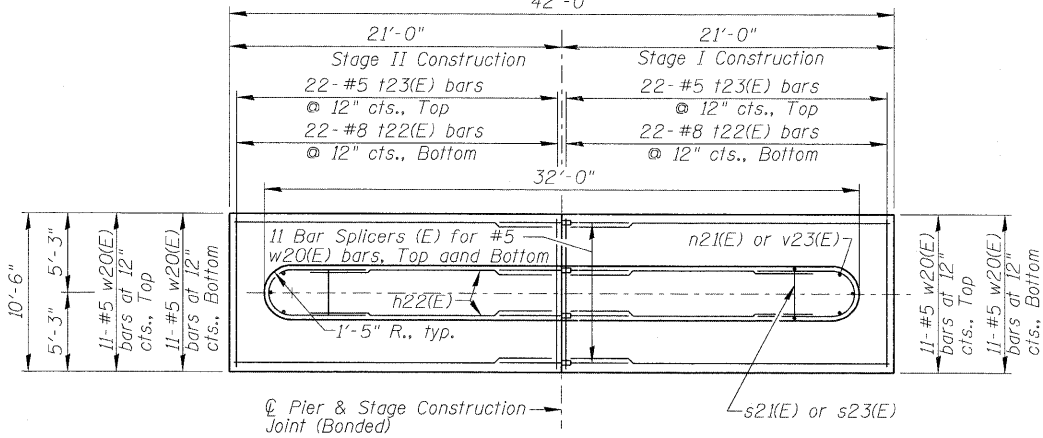
END VIEW

The maximum applied bearing pressure = $Q_{max} = 7.6$ ksf

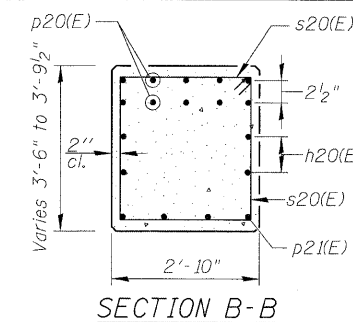


ELEVATION

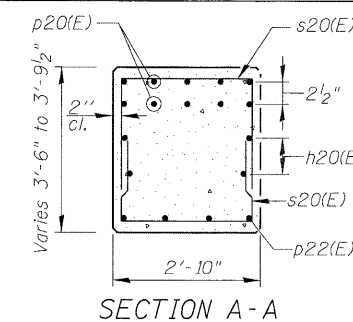
(Looking North)
42'-0"



FOOTING PLAN



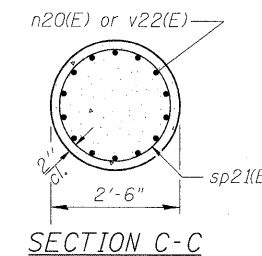
SECTION B-B



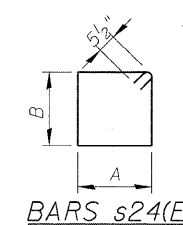
SECTION A-A

BEARING SEAT ELEV

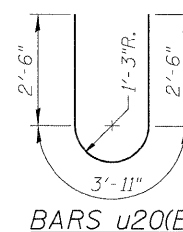
BEAM	ELEV.
1	725.99
2	726.16
3	726.29
4	726.29
5	726.16
6	725.99



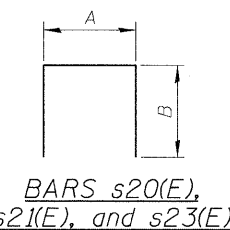
SECTION C-C



BARS s24(E)



BARS u20(E)



BARS s20(E), s21(E), and s23(E)

BILL OF MATERIAL

Bar No.	Size	Length	Shape
h20(E)	#8	20'-9"	—
h22(E)	#8	14'-3"	—
n20(E)	#7	5'-10"	U
n21(E)	#5	5'-7"	U
p20(E)	#9	22'-3"	—
p21(E)	#9	15'-6"	—
p22(E)	#9	10'-10"	—
s20(E)	#5	7'-2"	L
s21(E)	#5	28'-2"	L
s23(E)	#5	12'-6"	L
s24(E)	#5	12'-3"	□
** sp21(E)	#5	12'-3"	W
t22(E)	#8	10'-2"	—
t23(E)	#5	10'-2"	—
u20(E)	#6	8'-11"	U
v22(E)	#7	14'-6"	—
v23(E)	#5	12'-10"	—
w20(E)	#5	20'-9"	—
Structure Excavation	Cu. Yd.	463	
Concrete Structures	Cu. Yd.	118.3	
Reinforcement Bars, Epoxy Coated	Pound	12,690	

** Length is height of spiral.

A & B Dimensions

Bar	A	B
s20(E)	2'-6"	2'-4"
s21(E)	2'-6"	12'-10"
s23(E)	2'-6"	5'-0"
s24(E)	2'-6"	3'-2"

C, D & E Dimensions

Bar	C	D	E
n20(E)	5'-0"	10"	7"
n21(E)	5'-0"	7"	5"

BAR p22(E)

BARS n20(E), n21(E)

USER NAME =	DESIGNED - GWK	REVISED -
PLOT SCALE =	DRAWN - GFF	REVISED -
PLOT DATE =	CHECKED - WPK/GMK	REVISED -
FILE NAME =	DATE - 08/01/2011	REVISED -



**STATE OF ILLINOIS
DEPARTMENT OF TRANSPORTATION**

**PIER 2
STRUCTURE NUMBER 071-0097**

SHEET NO. 21 OF 26 SHEETS

F.A.P. RTE. =	SECTION =	COUNTY =	TOTAL SHEETS =	SHEET NO. =
742	38VBR-1	OGLE	87	82
CONTRACT NO. 64D16				
FED. ROAD DIST. NO. 2 ILLINOIS FED. AID PROJECT				