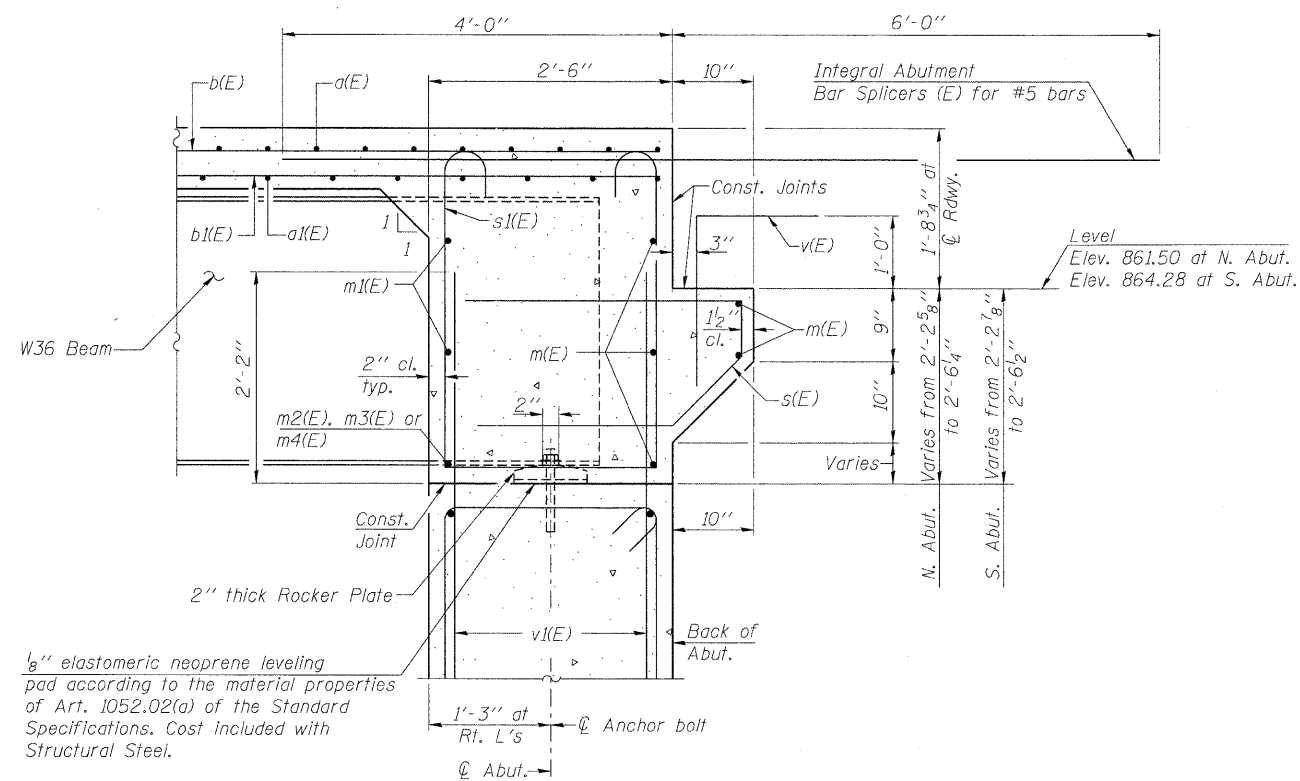


DIAPHRAGM ELEVATION AT ABUTMENT



SECTION A-A

Dimensions at right angles to abutment, except as shown.

MIN. BAR LAP

#6 bar = 3'-4"

NOTES

1. Reinforcement bars in diaphragm are billed with superstructure on sheet 13 of 29.
2. Concrete in diaphragm is included with Concrete Superstructure on sheet 13 of 29.
3. For details of bars s(E) & s(E) see sheet 13 of 29.
4. The s(E) and s(E) bars shall be placed parallel to the beams. Spacing for these bars shall be at right angles to the beams.

T:\5215-Phase1\11-2&11-265-Struct\A.dgn\11.26.dgn\0710096-64017-012-AD1.dgn

<b>LOCHNER</b> H.W. LOCHNER, INC. CONSULTING ENGINEERS AND PLANNERS 20 N. WACKER DRIVE, SUITE 1200 CHICAGO, ILLINOIS 60606	USER NAME =	DESIGNED - MWM/GWS	REVISED -	<b>STATE OF ILLINOIS</b> <b>DEPARTMENT OF TRANSPORTATION</b>	<b>INTEGRAL ABUTMENT DIAPHRAGM DETAILS</b> <b>STRUCTURE NO. 071-0096</b>	F.A.P. RTE.	SECTION	COUNTY	TOTAL SHEETS	SHEET NO.
	FILE NAME = 0710096-64017-012-AD1.dgn	CHECKED - LJB	REVISED -			316	4VBR-1	OGLE	73	56
	PLOT SCALE =	DRAWN - EF	REVISED -			CONTRACT NO. 64D17				
	PLOT DATE =	CHECKED - LJB	REVISED -			ILLINOIS FED. AID PROJECT				
	SHEET NO. 12 OF 29 SHEETS									