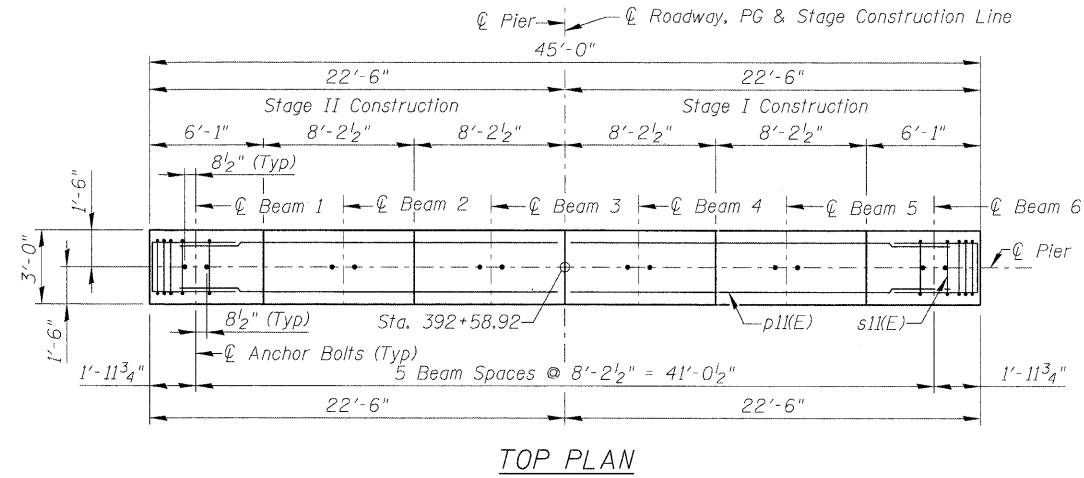


NOTES:

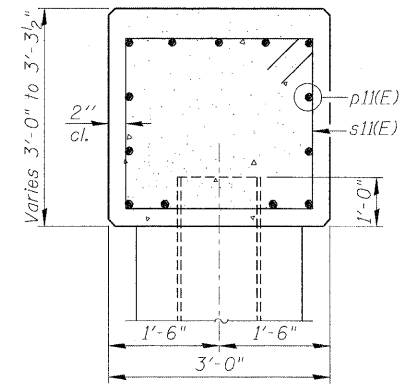
1. Space reinforcement in cap to miss anchor bolts.
2. Pour steps monolithically with cap.
3. For details of piles, see sheet 24 of 29.
4. For details of bar splicers, see sheet 25 of 29.

PILE DATA:

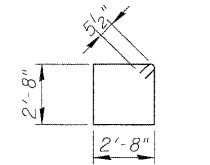
Type: HP14x73
 Nominal Required Bearing: 578K
 Factored Resistance Available: 321K
 Est. Length: 66 ft.
 No. Production Piles: 9
 No. Test Piles: 1



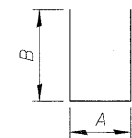
TOP PLAN



SECTION A-A



BAR s11(E)



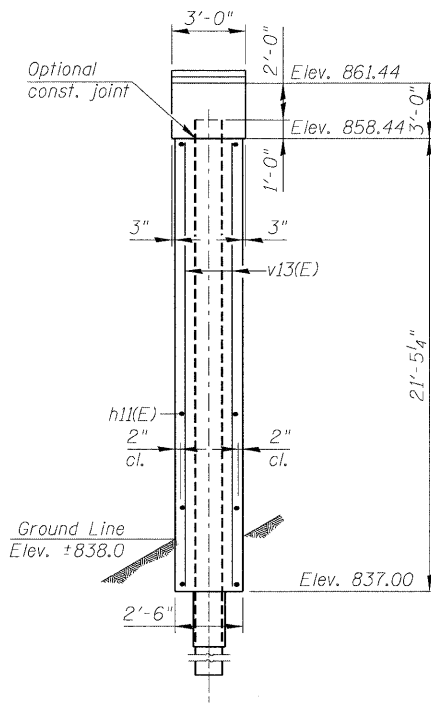
BARS u11(E), u12(E)

A & B DIMENSIONS

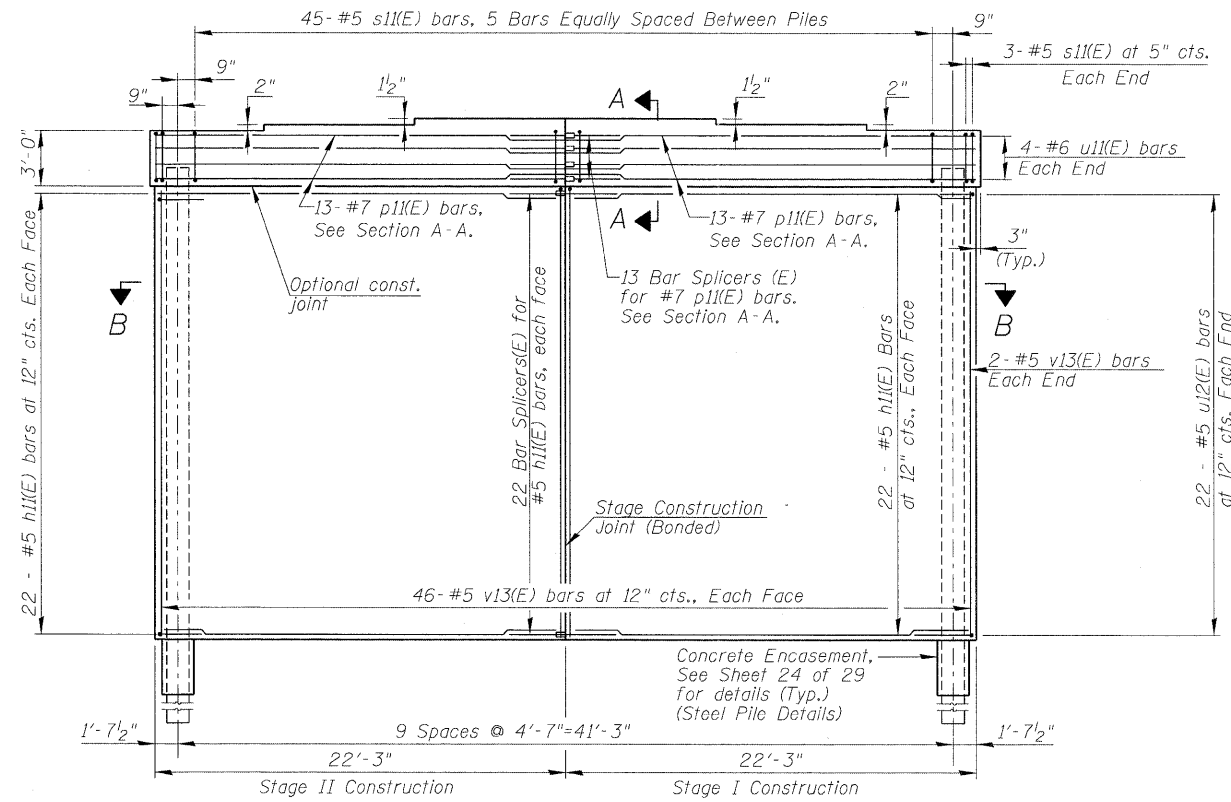
Bar	A	B
u11(E)	2'-8"	2'-4"
u12(E)	2'-2"	2'-4"

BEARING SEAT ELEV

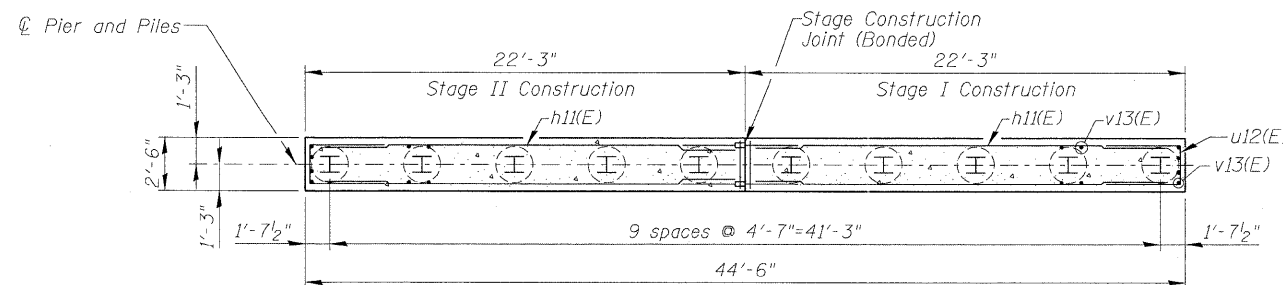
BEAM	ELEV.
1	861.44
2	861.61
3	861.74
4	861.74
5	861.61
6	861.44



END VIEW



ELEVATION
(Looking South)



SECTION B-B

BILL OF MATERIAL

Bar	No.	Size	Length	Shape
h11(E)	88	#5	22'-0"	—
p11(E)	26	#7	22'-3"	—
s11(E)	51	#5	11'-7"	□
u11(E)	8	#6	7'-4"	—
u12(E)	44	#5	6'-10"	—
v13(E)	96	#5	21'-2"	—
Structure Excavation			Cu. Yd.	11.7
Concrete Structures			Cu. Yd.	104.2
Reinforcement Bars, Epoxy Coated			Pound	6,340
Furnishing Steel Piles, Hp14x73			Foot	594
Driving Piles			Foot	594
Test Pile Steel, HP14x73			Each	1
Concrete Encasement			Cu. Yd.	5.5

USER NAME =	DESIGNED - GMK/SWM	REVISED -
PLDT SCALE =	DRAWN - GFP	REVISED -
PLDT DATE =	CHECKED - WPK/GMK	REVISED -
FILE NAME =	DATE - 03/21/2011	REVISED -



STATE OF ILLINOIS
DEPARTMENT OF TRANSPORTATION

PIER 3
STRUCTURE NUMBER 071-0096

F.A.P. RTE. 316	SECTION 4VBR-1	COUNTY OGLE	TOTAL SHEETS 73	SHEET NO. 67
				CONTRACT NO. 64D17
ILLINOIS FED. AID PROJECT				