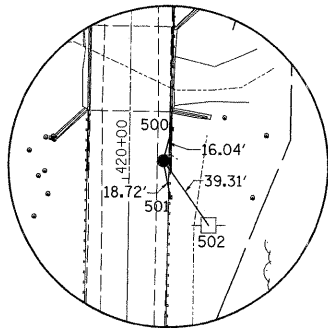
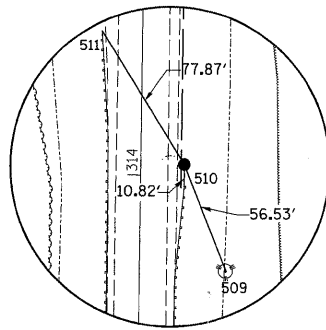


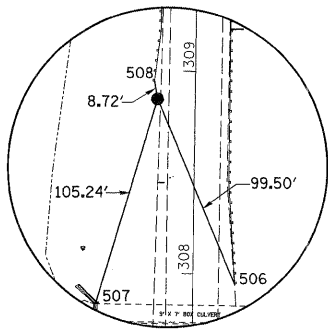
HORIZONTAL CONTROL POINT NO. 1



HORIZONTAL CONTROL POINT NO. 2



HORIZONTAL CONTROL POINT NO. 3



HORIZONTAL CONTROL POINT NO. 4

Chain IL26SEG contains:  
1283 1290 1302

Beginning chain IL26SEG description

Point 1283 N 1,822,480.4088 E 2,489,809.3437 Sta 304+12.2156

Course from 1283 to 1290 0° 46' 01.3553" Dist 6,523.2207'

Point 1290 N 1,829,003.0450 E 2,489,896.6702 Sta 369+35.4363

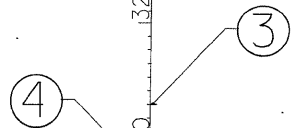
Course from 1290 to 1302 0° 46' 53.8366" Dist 11,583.9134'

Point 1302 N 1,840,585.8805 E 2,490,054.6915 Sta 485+19.3497

Ending chain IL26SEG description

65722898

NGS MONUMENT  
P.I.D. AH 2898



HORIZONTAL CONTROL POINTS							
POINT	NORTH	EAST	ELEVATION	CHAIN	STATION	OFFSET	DESCRIPTION
1	1834239.7680	2489943.3480	699.0020	IL26	421+72.3088	24.763' LT	GPS CONTROL POINT, PIN
2	1834076.1110	2489982.8490	700.0380	IL26	420+09.2059	16.9668' RT	GPS CONTROL POINT, PK NAIL
3	1823473.3411	2489844.2047	695.3726	IL26	314+05.5256	21.5655' RT	GPS CONTROL POINT, PIN
4	1822954.6871	2489797.0171	700.6626	IL26	308+86.2864	18.6746' LT	GPS CONTROL POINT, PIN
65722898	1825403.8280	2489809.6880	692.4300	IL26	333+35.3774	38.7916' LT	GPS CONTROL POINT, PERM. SURVEY MARKER

SURVEY WORK POINTS							
POINT	NORTH	EAST	ELEVATION	CHAIN	STATION	OFFSET	DESCRIPTION
100	1822775.1316	2489747.2439	697.3003	IL26	307+06.0807	66.0397' LT	TOPO SURVEY POINT, PK NAIL
101	1824501.1834	2489859.4597	693.2889	IL26	324+33.4800	23.0594' RT	TOPO SURVEY POINT, NAIL
102	1834182.5681	2489423.6519	695.0256	IL26	421+08.0248	543.6304' LT	TOPO SURVEY POINT, NAIL
103	1824534.5869	2488798.9981	687.4166	IL26	324+52.6841	1037.7544' LT	TOPO SURVEY POINT, NAIL
104	1823831.8284	2488329.4111	688.5196	IL26	317+43.7022	1497.8914' LT	TOPO SURVEY POINT, NAIL
105	1826218.2371	2488416.3445	691.4109	IL26	341+31.0608	1442.9127' LT	TOPO SURVEY POINT, NAIL
108	1823407.2318	2490803.1096	691.2248	IL26	313+52.2591	981.2695' RT	TOPO SURVEY POINT, NAIL
109	1823955.0585	2488836.5311	689.1936	IL26	318+73.7101	992.4666' LT	TOPO SURVEY POINT, NAIL
110	1823167.8305	2489098.3703	688.9330	IL26	310+90.0579	720.1122' LT	TOPO SURVEY POINT, NAIL
111	1822643.7842	2488117.5890	688.5064	IL26	305+52.9288	1693.7902' LT	TOPO SURVEY POINT, NAIL
112	1822767.0726	2489789.7928	702.4308	IL26	306+98.5920	23.3867' LT	TOPO SURVEY POINT, PK NAIL
113	1824512.3253	2488669.7523	688.8310	IL26	324+28.6943	1166.6906' LT	TOPO SURVEY POINT, NAIL
114	1824139.0468	2488754.1638	688.4858	IL26	320+56.5792	1077.2895' LT	TOPO SURVEY POINT, NAIL
120	1834176.4794	2489763.0542	695.5261	IL26	421+06.5666	204.1767' LT	TOPO SURVEY POINT, NAIL
121	1834224.6006	2489180.9900	694.0694	IL26	421+46.7432	786.8432' LT	TOPO SURVEY POINT, NAIL
122	1834279.7686	2490167.9322	696.6895	IL26	422+15.3694	199.2546' RT	TOPO SURVEY POINT, NAIL
123	1824564.2498	2489820.4124	693.2726	IL26	324+96.0180	16.8287' LT	NAIL, NAIL
124	1824321.0526	2489315.6039	689.9004	IL26	322+46.0847	518.3363' LT	NAIL, NAIL
125	1824113.9769	2489021.1076	685.8196	IL26	320+35.0852	810.034' LT	NAIL, NAIL
126	1824144.1511	2488877.6304	683.9357	IL26	320+63.3359	953.9023' LT	NAIL, NAIL
129	1823234.1005	2489834.3788	698.2876	IL26	311+66.1749	14.9432' RT	NAIL
130	1834316.8664	2490082.6343	692.9151	IL26	422+51.3001	113.4586' RT	NAIL, NAIL
131	1834316.7752	2490082.8364	692.8649	IL26	422+51.2117	113.6619' RT	NAIL, NAIL
133	1834617.2901	2490295.2254	696.9990	IL26	425+54.5959	321.9317' RT	NAIL, NAIL
134	1834746.2604	2490473.8482	694.5060	IL26	426+85.9909	498.7786' RT	NAIL, NAIL
135	1823296.3877	2489966.3756	690.7431	IL26	312+30.2236	146.0943' RT	TOPO SURVEY POINT, NAIL

BENCH MARKS							
POINT	NORTH	EAST	ELEVATION	CHAIN	STATION	OFFSET	DESCRIPTION
401	1834143.5560	2489944.4420	699.4200	IL26	420+76.1207	22.3566' LT	HEADWALL, CHISELED SQUARE
403	1823277.1750	2489803.0020	700.3497	IL26	312+08.8255	17.0074' LT	HANDRAIL, PLUG

REFERENCE TIES							
POINT	NORTH	EAST	CHAIN	STATION	OFFSET	DESCRIPTION	
500	1834091.6170	2489986.9410	IL26	420+24.7663	20.8469' RT	GUARDPOST, SHINER	
501	1834057.7060	2489986.3080	IL26	419+90.8498	20.6766' RT	GUARDPOST, SHINER	
502	1834043.8580	2490005.3310	IL26	419+77.2626	39.8867' RT	POWER POLE, SHINER	
503	1834176.9550	2489929.8650	IL26	421+09.3177	37.3879' LT	POWER POLE, SHINER	
504	1834230.3290	2489946.2730	IL26	421+62.9106	21.7095' LT	GUARDPOST, SHINER	
505	1834248.3410	2489946.6690	IL26	421+80.9263	21.5593' LT	GUARDPOST, SHINER	
506	1822143.2116	2470247.3355	IL26	307+94.9836	20.8801' RT	END OF GUARDRAIL	
507	1822134.3676	2470178.3395	IL26	307+85.2168	47.9913' LT	HEADWALL, TOP	
508	1822243.6136	2470207.4465	IL26	308+94.8426	20.3494' LT	END OF GUARDRAIL	
509	1822701.0840	2470276.8993	IL26	313+53.2017	42.9729' LT	TREE	
510	1822742.8746	2470256.1375	IL26	313+94.7107	21.6536' LT	END OF GUARDRAIL	
511	1822819.9556	2470215.3025	IL26	314+71.2381	20.2096' LT	END OF GUARDRAIL	

FILE NAME = c:\pwork\pwork\grantpm\dms41810\210807-sht-ATB.dgn	USER NAME = grantpm	DESIGNED -	REVISED -	<b>STATE OF ILLINOIS DEPARTMENT OF TRANSPORTATION</b>	<b>HORIZONTAL &amp; VERTICAL CONTROL</b>			F.A.P. RTE. 316	SECTION *	COUNTY LEE	TOTAL SHEETS 216	SHEET NO. 25
PLOT SCALE = 700.0000' / in.	CHECKED -	REVISED -	SCALE:					SHEET NO.	OF SHEETS	STA.	TO STA.	CONTRACT NO. 64D57
PLOT DATE = Tue Aug 23 06:24:53 2011	DATE -	REVISED -	ILLINOIS FED. AID PROJECT									
• 102BR-5, 102BR-6 & 102BR-7												