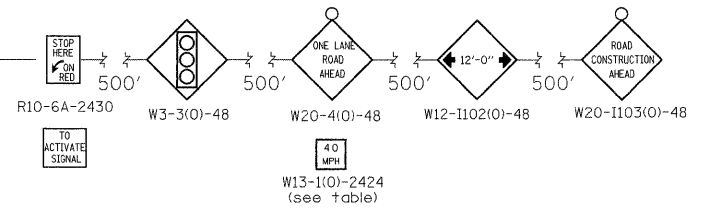
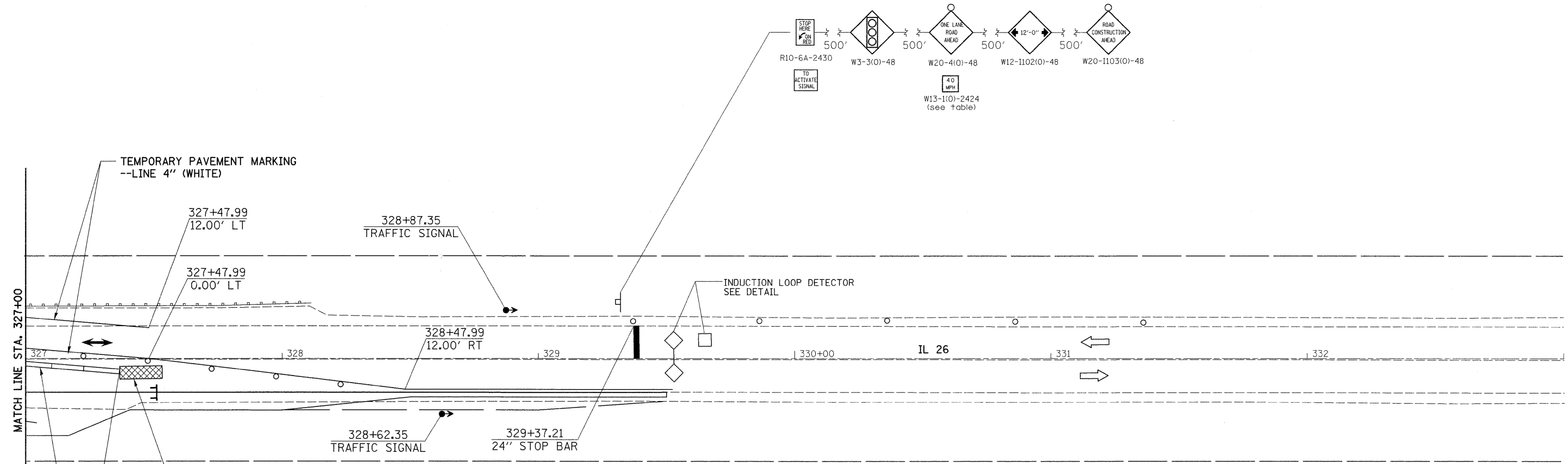


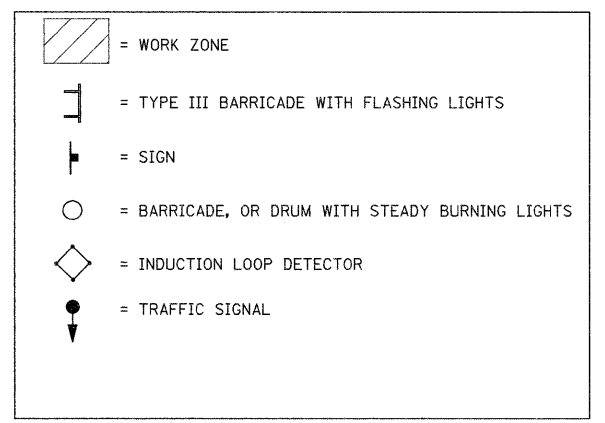
STAGE 1



STAGE 1 NOTES

1. USE STANDARD 701321.
2. CONSTRUCT CULVERT RT TO STAGE CONSTRUCTION LINE.
3. INSTALL GUARDRAIL RT. EXISTING GUARDRAIL LT TO REMAIN IN PLACE.

LEGEND



• 102BR-5, 102BR-6 & 102BR-7

FILE NAME =	USER NAME = grantpm	DESIGNED -	REVISED -	STATE OF ILLINOIS DEPARTMENT OF TRANSPORTATION	IL 26 STAGING DETAILS S.N. 052-2031 STAGE 1			F.A.P. RTE.	SECTION	COUNTY	TOTAL SHEETS	SHEET NO.
ca:\pwwork\pwwork\grantpm\dms41810\021007-sht-staging.dgn		DRAWN -	REVISED -					316	*	LEE	216	47
	PLOT SCALE = 28.0000' / in.	CHECKED -	REVISED -					CONTRACT NO. 64D57				
	PLOT DATE = Tue Aug 23 06:22:25 2011	DATE -	REVISED -					ILLINOIS FED. AID PROJECT				
				SCALE:	SHEET NO.	OF	SHEETS	STA.	TO STA.			