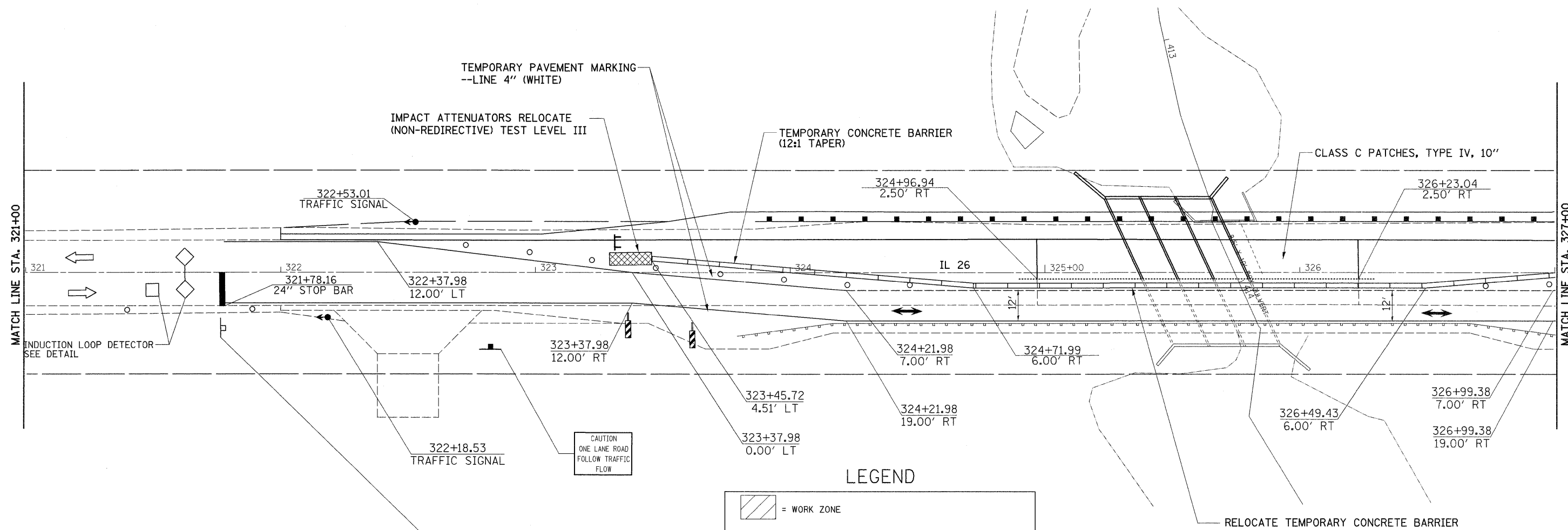
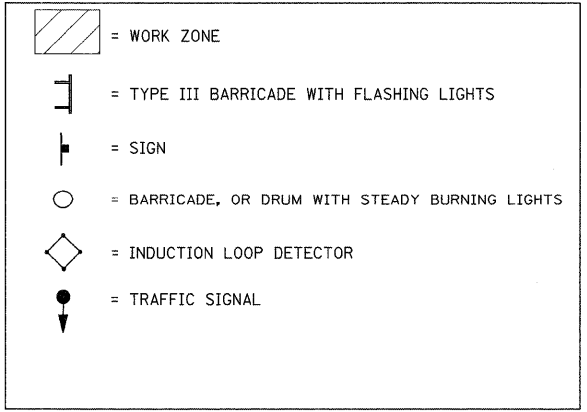


# STAGE 2

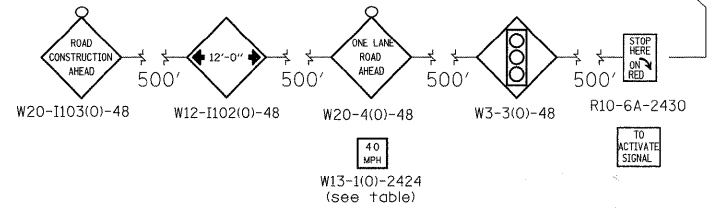


## LEGEND



## STAGE 2 NOTES

1. USE STANDARD 701321.
2. CONSTRUCT CULVERT LT TO STAGE CONSTRUCTION LINE.
3. INSTALL GUARDRAIL LT.



• 102BR-5, 102BR-6 & 102BR-7

FILE NAME =	USER NAME = grantpm	DESIGNED -	REVISED -	<b>STATE OF ILLINOIS DEPARTMENT OF TRANSPORTATION</b>	<b>IL 26 STAGING DETAILS S.N. 052-2031 STAGE 2</b>			F.A.P. RTE. 316	SECTION *	COUNTY LEE	TOTAL SHEETS 216	SHEET NO. 49
cs:\pwork\pwork\grantpm\dms41810\0210807-sht-staging.dgn		DRAWN -	REVISED -		SCALE:	SHEET NO.	OF	SHEETS	STA.	TO STA.	CONTRACT NO. 64D57	
		CHECKED -	REVISED -								ILLINOIS FED. AID PROJECT	
		DATE = Tue Aug 23 06:22:26 2011	REVISED -									