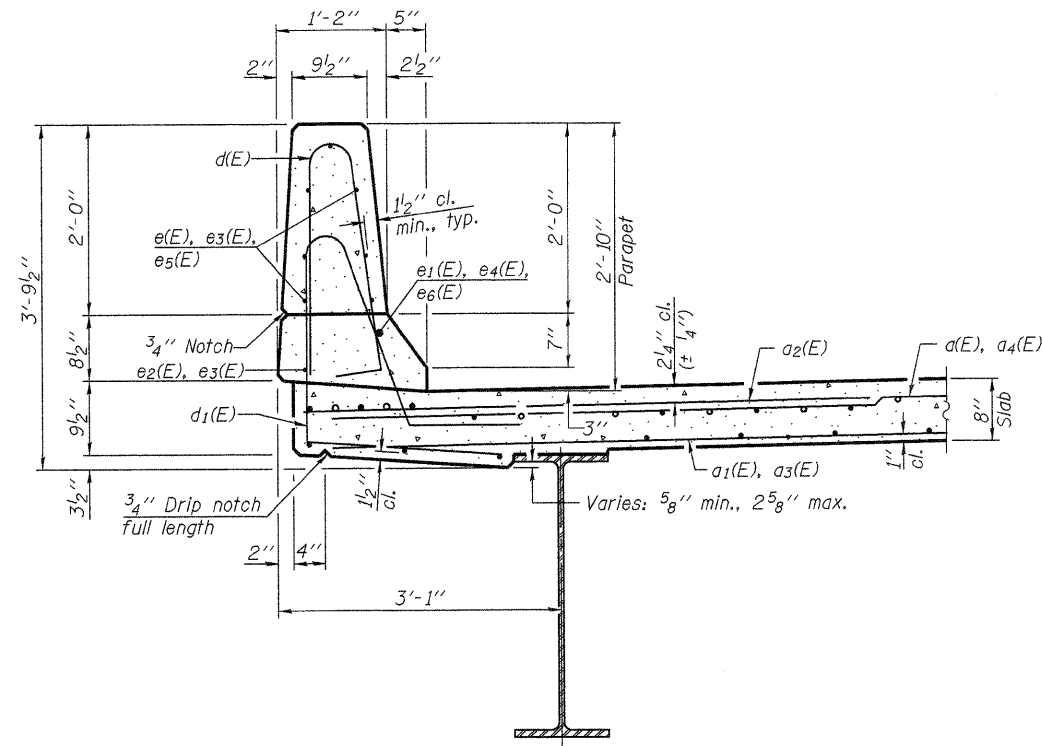
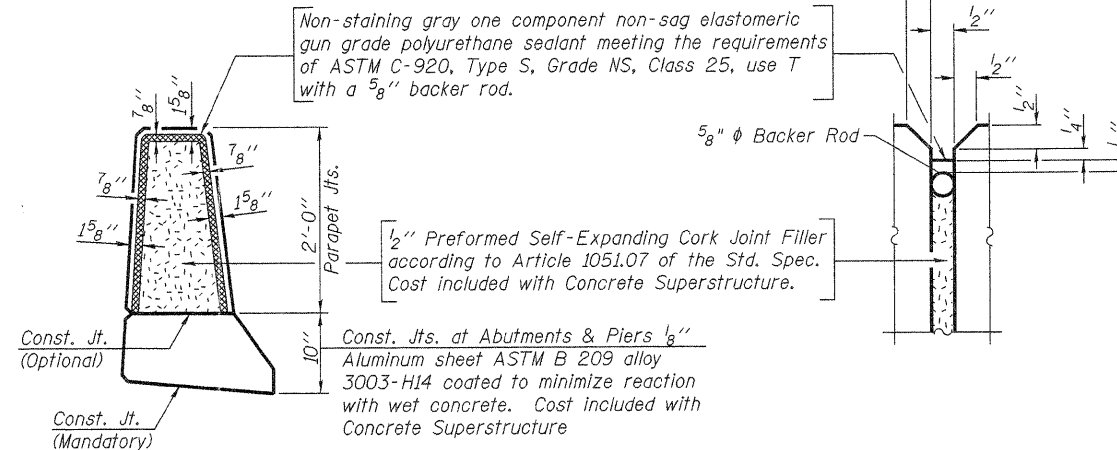


INSIDE ELEVATION OF PARAPET



SECTION THRU PARAPET



PARAPET JOINT DETAILS

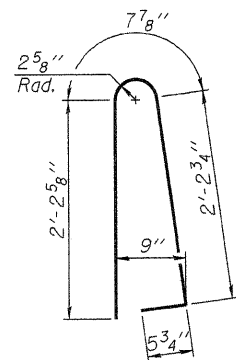
MINIMUM BAR LAP

(Parapet)
 #4 bar = 2'-0"
 #8 bar = 5'-2"

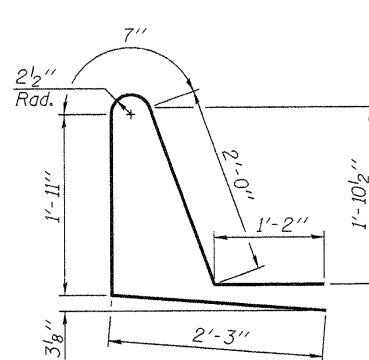
**SUPERSTRUCTURE
 BILL OF MATERIAL**

Bar	No.	Size	Length	Shape
d(E)	296	#5	17'-2"	—
a1(E)	193	#5	16'-8"	—
a2(E)	590	#6	6'-6"	—
a3(E)	193	#5	24'-4"	—
a4(E)	296	#5	24'-10"	—
b(E)	282	#5	29'-6"	—
b1(E)	86	#6	37'-6"	—
b2(E)	210	#5	34'-8"	—
d(E)	352	#5	5'-7"	└
d1(E)	352	#5	7'-11"	└
e(E)	56	#4	18'-1"	—
e1(E)	8	#8	20'-11"	—
e2(E)	14	#4	19'-4"	—
e3(E)	64	#4	8'-0"	—
e4(E)	8	#8	8'-0"	—
e5(E)	42	#4	17'-6"	—
e6(E)	6	#8	21'-4"	—
m(E)	10	#6	17'-6"	—
m1(E)	12	#6	9'-6"	—
m2(E)	10	#6	5'-10"	—
m3(E)	4	#6	2'-9"	—
m4(E)	8	#6	7'-8"	—
m5(E)	2	#6	2'-0"	—
m6(E)	4	#6	7'-1"	—
m7(E)	10	#6	25'-2"	—
m8(E)	4	#6	8'-7"	—
m9(E)	2	#6	3'-6"	—
s(E)	98	#5	6'-10"	└
s1(E)	86	#4	8'-10"	└
v(E)	86	#5	4'-0"	└
Reinforcement Bars, Epoxy Coated			Pound	58,380
Concrete Superstructure			Cu. Yds.	238.3

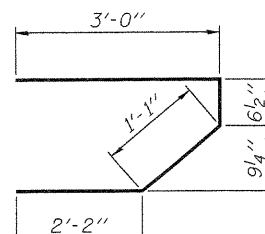
Bars indicated thus 1 x 3-#5 etc. indicates 1 line of bars with 3 lengths per line.



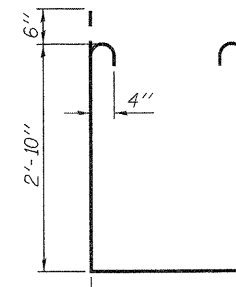
BAR d(E)



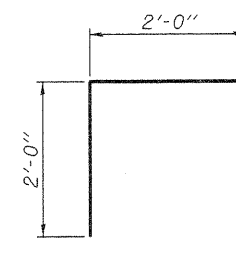
BAR d1(E)



BAR s(E)



BAR s1(E)



BAR v(E)