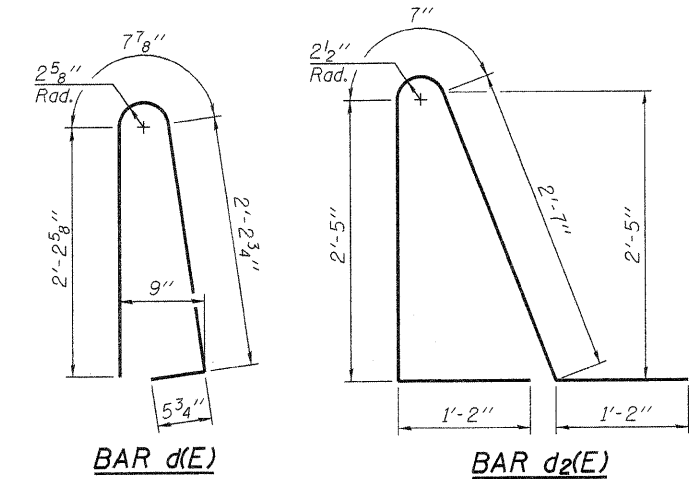


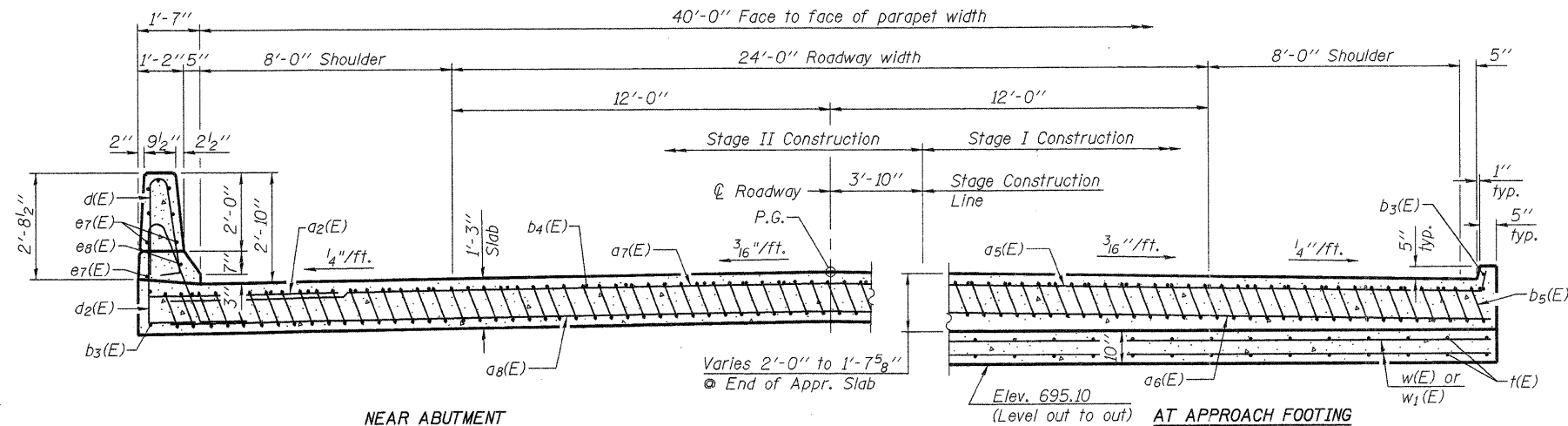
Notes:

See sheet 17 of 30 for Detail A and View B-B.
 Approach slab and parapet concrete shall be paid for as Concrete Superstructure.
 Approach footing concrete shall be paid for as Concrete Structures.
 Reinforcement shall be paid for as Reinforcement Bars, Epoxy Coated.
 For v(E) bar details, see sheet 14 of 30.
 The approach footing maximum applied service bearing pressure (Qmax) = 2.0 ksf.
 For bar splicer details, see sheet 27 of 30.
 Cost of excavation for approach footing included with Concrete Structures.
 For Porous Granular Embankment (Special) and drainage treatment details, see sheet 2 of 30.
 For additional parapet details, see sheet 14 of 30.



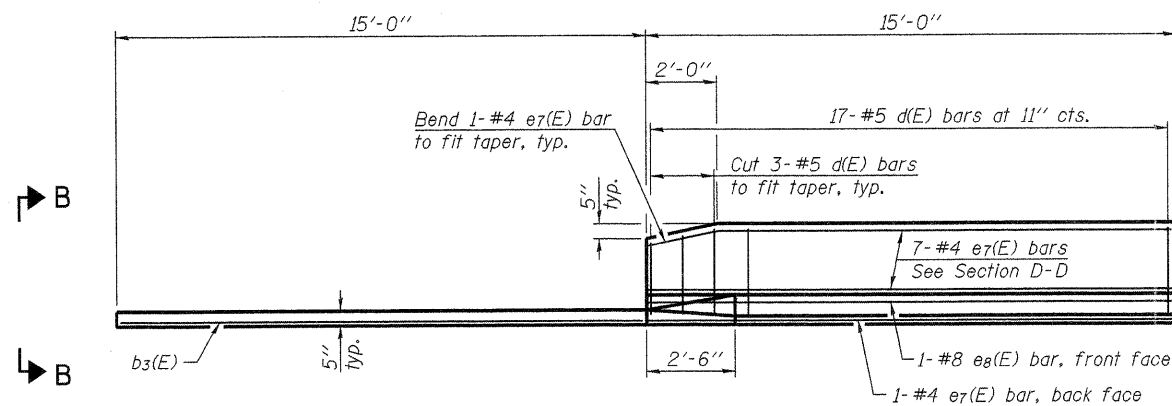
* Tilt #9 b5(E) bars as required to maintain clearance.

*** Cost Included with Concrete Superstructure.

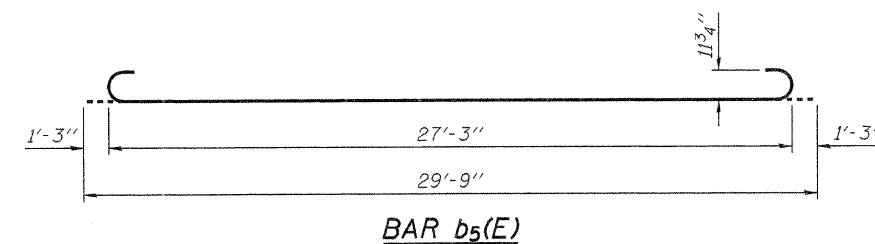
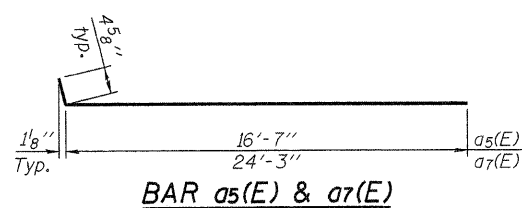


SECTION D-D

(Looking North)
 (See Plan on Sheet 17 of 30 for dimensions not shown)



VIEW E-E



**NORTH APPROACH
 BILL OF MATERIAL**

Bar	No.	Size	Length	Shape
a2(E)	24	#6	6'-6"	—
a5(E)	25	#4	17'-0"	—
a6(E)	46	#5	16'-10"	—
a7(E)	25	#4	24'-8"	—
a8(E)	46	#5	24'-6"	—
b3(E)	4	#4	14'-8"	—
b4(E)	34	#4	29'-8"	—
b5(E)	96	#9	29'-9"	—
d(E)	34	#5	5'-7"	Λ
d2(E)	34	#5	7'-11"	Λ
e7(E)	16	#4	14'-8"	—
e8(E)	2	#8	14'-8"	—
t(E)	86	#4	17'-5"	—
w(E)	40	#5	16'-9"	—
w1(E)	40	#5	24'-5"	—
Concrete Superstructure		Cu. Yd.	69.7	
Concrete Structures		Cu. Yd.	12.9	
Reinforcement Bars, Epoxy Coated		Pound	16,770	

BA-0 7-1-10



FILE NAME = 0520081-64057.DGN	DESIGNED - A.R.K.	REVISED -
USER NAME = S.A.P.	CHECKED - J.A.M.	REVISED -
PLOT SCALE =	DRAWN - S.A.P.	REVISED -
PLOT DATE = 08/10/11	CHECKED - A.R.K. & J.A.M.	REVISED -

STATE OF ILLINOIS
 DEPARTMENT OF TRANSPORTATION

NORTH BRIDGE APPROACH SLAB DETAILS
 STRUCTURE NO. 052-0081

SHEET NO. 18 OF 30 SHEETS

F.A.P. RTE. 316	SECTION 102BR-6	COUNTY LEE	TOTAL SHEETS 216	SHEET NO. 80
			CONTRACT NO. 64D57	
ILLINOIS FED. AID PROJECT				