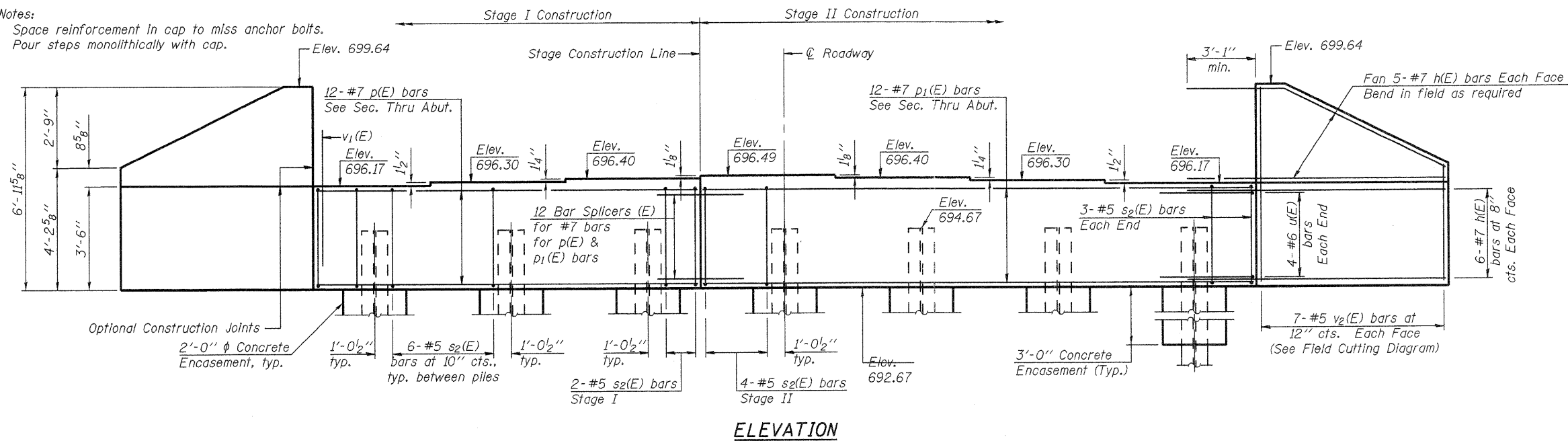
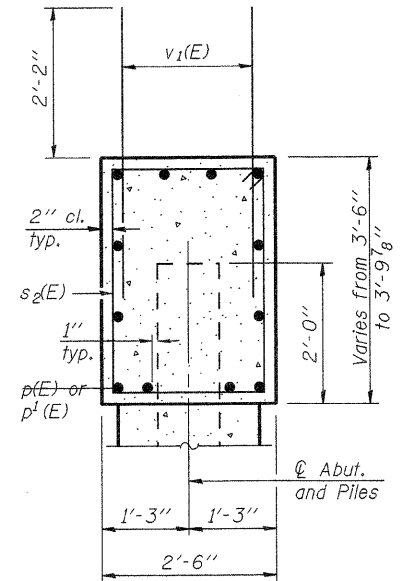


Notes:

Space reinforcement in cap to miss anchor bolts.
 Pour steps monolithically with cap.



ELEVATION

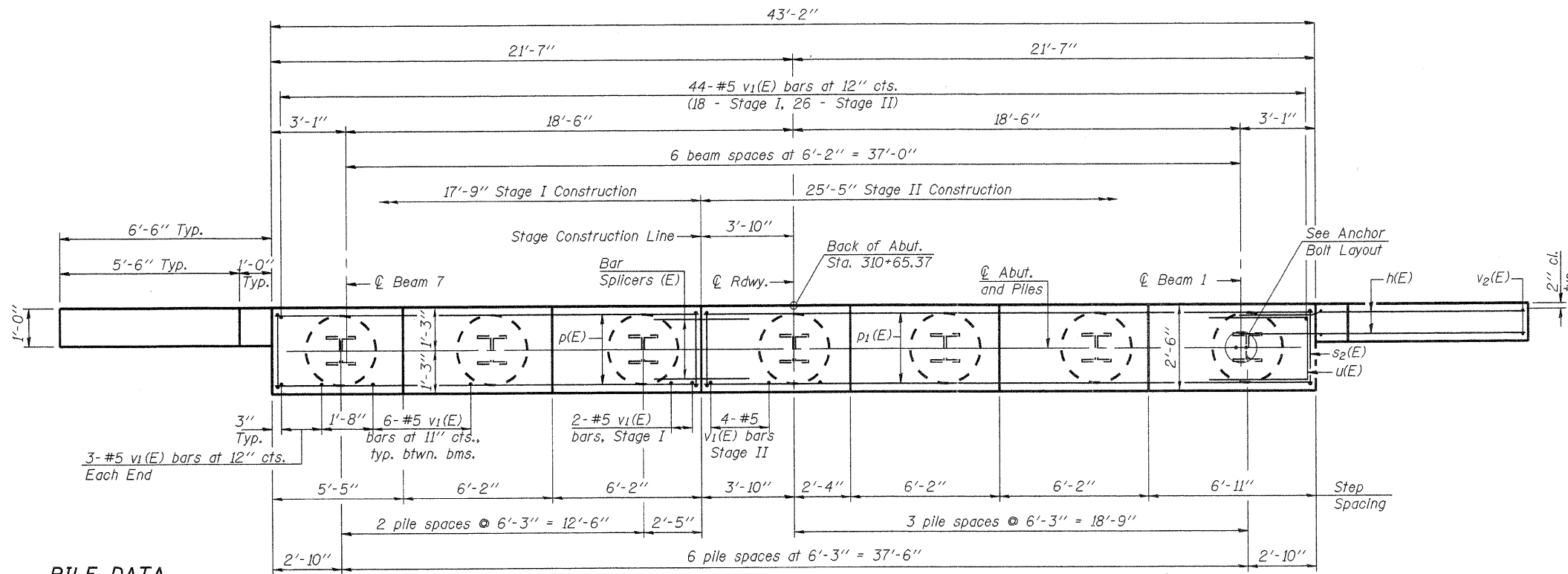


SEC. THRU ABUT.

**SOUTH ABUTMENT
 BILL OF MATERIAL**

Bar	No.	Size	Length	Shape
h(E)	44	#7	10'-1"	—
p(E)	12	#7	17'-6"	—
p1(E)	12	#7	25'-2"	—
s2(E)	42	#5	11'-7"	□
u(E)	8	#6	14'-1"	□
v1(E)	86	#5	4'-6"	—
v2(E)	14	#5	10'-10"	—
Structure Excavation	Cu. Yd.		96	
Concrete Structures	Cu. Yd.		17.4	
Reinforcement Bars, Epoxy Coated	Pound		3,190	
Furnishing Steel Piles, HP12x53	Foot		420	
Driving Piles	Foot		420	
Test Piles, Steel HP12x53	Each		1	
Concrete Encasement	Cu. Yd.		2.4	

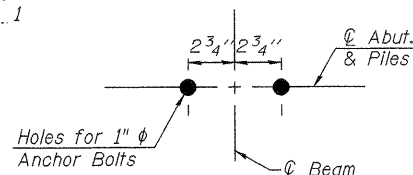
For details of Bar Splicers, see sheet 27 of 30.
 For details of piles and Concrete Encasement, see sheet 26 of 30.



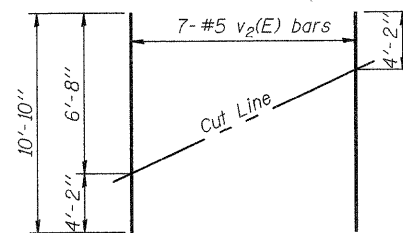
PLAN

PILE DATA

Type:..... HP12x53
 Nominal Required Bearing:..... 240 k
 Factored Resistance Available:..... 132 k
 Est. Length:..... 70 ft.
 No. Production Piles:..... 6
 No. Test Piles:..... 1

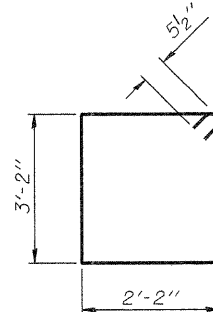


**ANCHOR BOLT
 LAYOUT**

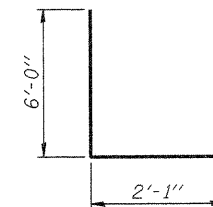


FIELD CUTTING DIAGRAM

Order v2(E) full length. Cut as shown and use remainder of bars in opposite face.



BAR s2(E)



BAR u(E)

AI-0

7-1-10



FILE NAME = 0520081-64057.DGN
 USER NAME = S.A.P.
 PLOT SCALE =
 PLOT DATE = 08/18/11

DESIGNED - A.R.K.
 CHECKED - J.A.M.
 DRAWN - S.A.P.
 CHECKED - A.R.K. & J.A.M.

REVISED -
 REVISED -
 REVISED -
 REVISED -

**STATE OF ILLINOIS
 DEPARTMENT OF TRANSPORTATION**

**SOUTH ABUTMENT
 STRUCTURE NO. 052-0081**

SHEET NO. 22 OF 30 SHEETS

F.A.P. RTE.	SECTION	COUNTY	TOTAL SHEETS	SHEET NO.
316	102BR-6	LEE	216	84
				CONTRACT NO. 64D57
ILLINOIS FED. AID PROJECT				