

**STANDARD BAR SPLICER ASSEMBLY**

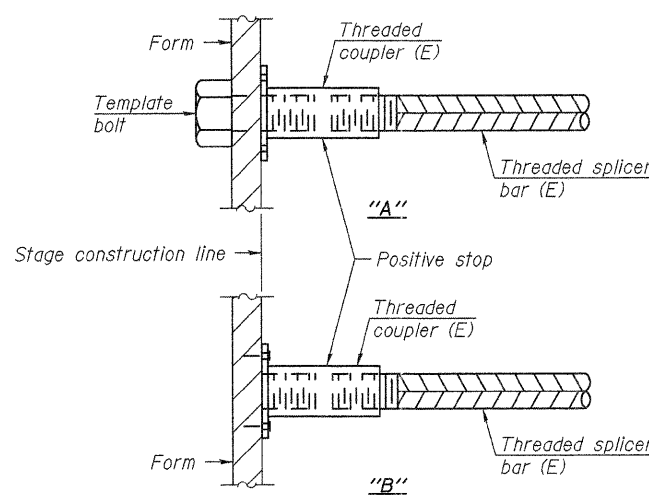
| Minimum Lap Lengths    |         |         |         |         |         |
|------------------------|---------|---------|---------|---------|---------|
| Bar size to be spliced | Table 1 | Table 2 | Table 3 | Table 4 | Table 5 |
| 3, 4                   | 1'-5"   | 1'-11"  | 2'-1"   | 2'-4"   | 2'-3"   |
| 5                      | 1'-9"   | 2'-5"   | 2'-7"   | 2'-11"  | 2'-10"  |
| 6                      | 2'-1"   | 2'-11"  | 3'-1"   | 3'-6"   | 3'-4"   |
| 7                      | 2'-9"   | 3'-10"  | 4'-2"   | 4'-8"   | 4'-6"   |
| 8                      | 3'-8"   | 5'-1"   | 5'-5"   | 6'-2"   | 5'-10"  |
| 9                      | 4'-7"   | 6'-5"   | 6'-10"  | 7'-9"   | 7'-5"   |

- Table 1: Black bar, 0.8 Class C
- Table 2: Black bar, Top bar lap, 0.8 Class C
- Table 3: Epoxy bar, 0.8 Class C
- Table 4: Epoxy bar, Top bar lap, 0.8 Class C
- Table 5: Epoxy bar, Top bar lap, Class B

Threaded splicer bar length = min. lap length + 1/2" + thread length

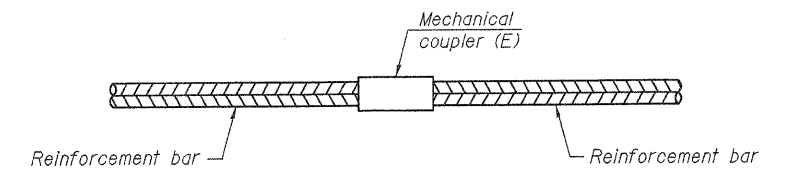
\* Epoxy not required on Bar Splicer Assembly components used in conjunction with black bars.

| Location         | Bar size | No. assemblies required | Table for minimum lap length |
|------------------|----------|-------------------------|------------------------------|
| Deck             | #5       | 489                     | 3                            |
| Appr. Slabs      | #4       | 50                      | 4                            |
| Appr. Slabs      | #5       | 92                      | 3                            |
| Appr. Slab Ftgs. | #5       | 80                      | 3                            |
| Abut. Caps       | #7       | 24                      | 4                            |
| Abut. Diaphragms | #6       | 16                      | 4                            |
| Pier Caps        | #6       | 20                      | 4                            |
| Pier Enc. Wall   | #5       | 62                      | 4                            |



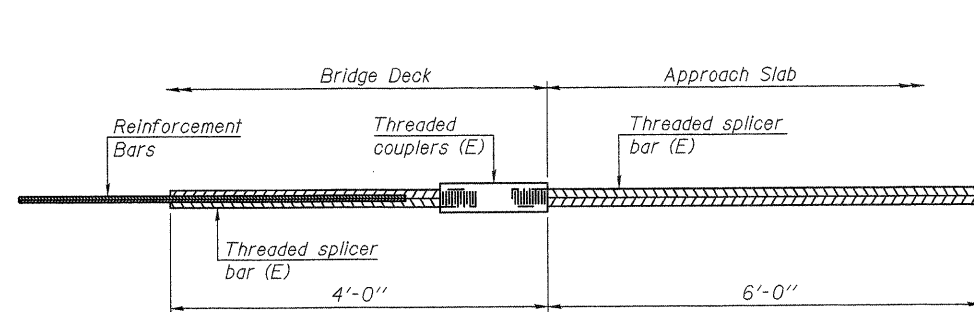
**INSTALLATION AND SETTING METHODS**

- "A" : Set bar splicer assembly by means of a template bolt.
- "B" : Set bar splicer assembly by nailing to wood forms or cementing to steel forms.
- (E) : Indicates epoxy coating.



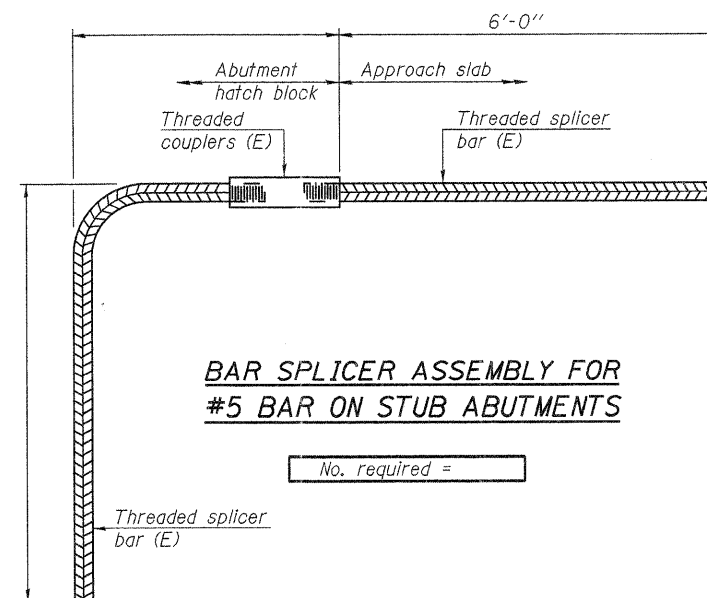
**STANDARD MECHANICAL SPLICER**

| Location | Bar size | No. assemblies required |
|----------|----------|-------------------------|
|          |          |                         |
|          |          |                         |
|          |          |                         |
|          |          |                         |



**BAR SPLICER ASSEMBLY FOR #5 BAR ON INTEGRAL OR SEMI-INTEGRAL ABUTMENTS**

No. required = 94



**BAR SPLICER ASSEMBLY FOR #5 BAR ON STUB ABUTMENTS**

No. required =

**NOTES**

- Splicer bars shall be deformed with threaded ends and have a minimum 60 ksi yield strength.
- All reinforcement shall be lapped and tied to the splicer bars.
- Bar splicer assemblies shall be epoxy coated according to the requirements for reinforcement bars. See Section 508 of the Standard Specifications.
- See special provision for Mechanical Splicers.
- See approved list of bar splicer assemblies and mechanical splicers for alternatives.

BSD-1 7-1-10



|                               |                           |           |
|-------------------------------|---------------------------|-----------|
| FILE NAME = 0520081-64D57.DGN | DESIGNED - A.R.K.         | REVISED - |
| USER NAME = S.A.P.            | CHECKED - J.A.M.          | REVISED - |
| PLOT SCALE =                  | DRAWN - S.A.P.            | REVISED - |
| PLOT DATE = 08/10/11          | CHECKED - A.R.K. & J.A.M. | REVISED - |

STATE OF ILLINOIS  
DEPARTMENT OF TRANSPORTATION

BAR SPLICER ASSEMBLY AND MECHANICAL SPLICER DETAILS  
STRUCTURE NO. 052-0081

SHEET NO. 27 OF 30 SHEETS

|                           |         |        |              |                    |
|---------------------------|---------|--------|--------------|--------------------|
| F.A.P. RTE.               | SECTION | COUNTY | TOTAL SHEETS | SHEET NO.          |
| 316                       | 102BR-6 | LEE    | 216          | 89                 |
|                           |         |        |              | CONTRACT NO. 64D57 |
| ILLINOIS FED. AID PROJECT |         |        |              |                    |