

GENERAL NOTES

Reinforcement bars shall conform to the requirements of ASTM A 706 Gr 60. Layout of slope protection system may be varied to suit ground conditions in the field as directed by the Engineer.

Precast alternate is not allowed.

The Breaker-Run Crushed Stone shall be capped with 6 in. of CA7 and satisfy the Standard Specifications unless otherwise indicated in the Special Provisions. The capping material shall be paid for as Breaker-Run Crushed Stone.

Attachment of Steel Plate Beam Guardrail, Attached to Structures shall be according to Case IV except that the 1 1/2" φ holes in the top slab shall be formed (instead of cored) for the threaded rods.

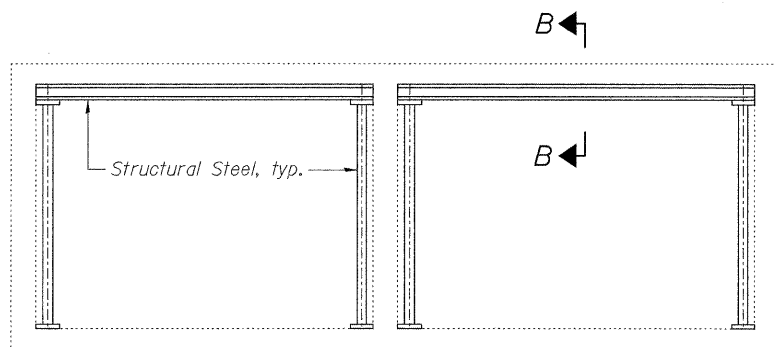
STATION 325+58.00
 BUILT 20 BY
 STATE OF ILLINOIS
 F.A.P. RT. 316 SEC. 102-BR7
 LOADING HS20-44
 STRUCTURE NO. 052-2031

NAME PLATE

See Std. 515001

TOTAL BILL OF MATERIAL

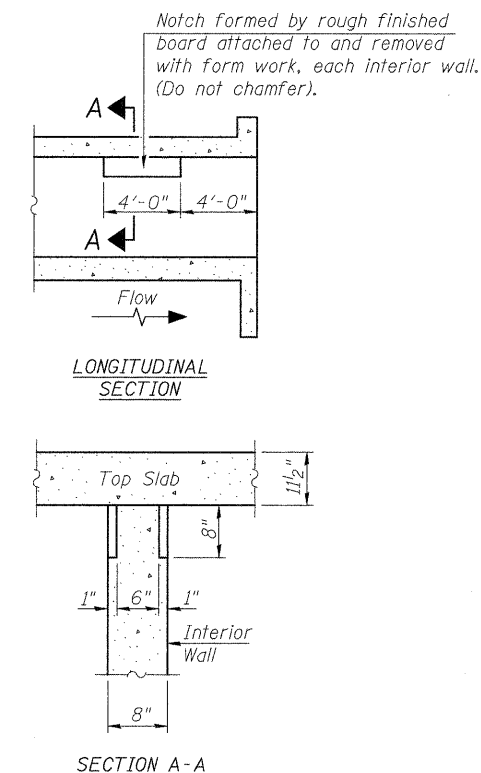
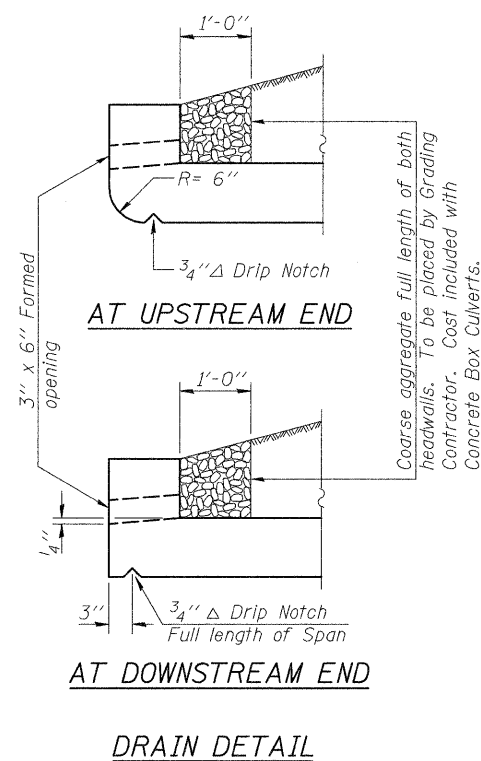
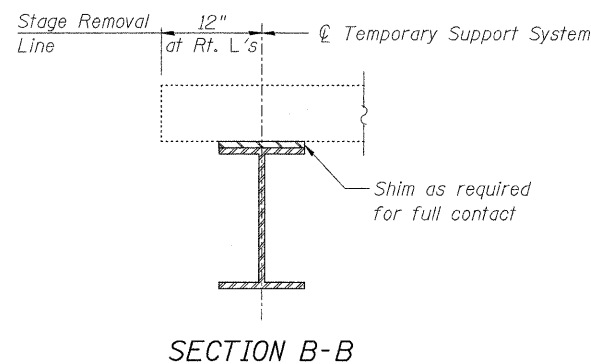
ITEM	UNIT	TOTAL
Removal and Disposal of Unsuitable Material	Cu. Yd.	302
Stone Riprap, Class A4	Sq. Yd.	123
Filter Fabric	Sq. Yd.	123
Removal of Existing Structures No. 2	Each	1
Reinforcements Bars	Pound	65010
Bar Splicers	Each	196
Name Plates	Each	1
Concrete Box Culverts	Cu. Yd.	281.8
Steel Plate Beam Guardrail, Attached to Structures	Foot	100
Breaker-Run Crushed Stone	Ton	488
Temporary Sheet Piling	Sq. Ft.	2149
Temporary Support System	L. Sum	1



TEMPORARY SUPPORT SYSTEM

Notes:

1. Place Temporary Support prior to Stage I Removal
2. Place Temporary Support along skew.
3. Temporary Support System shall not be painted.



**PHOEBE NESTING
 SITE DETAILS**
 (Downstream End Only)