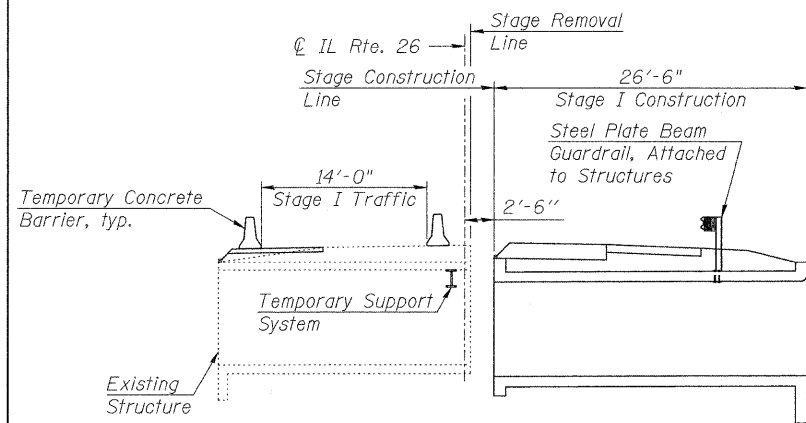
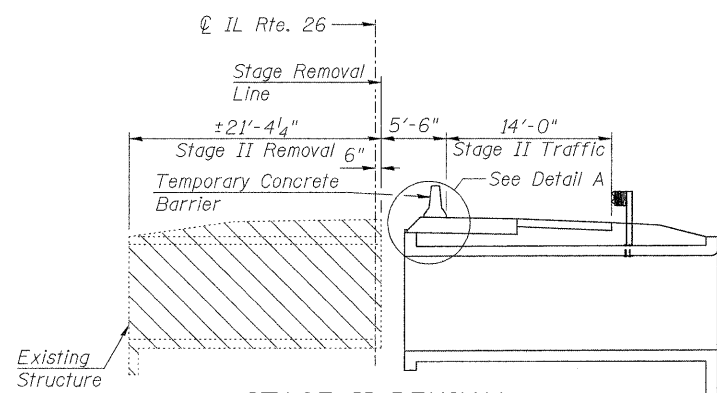


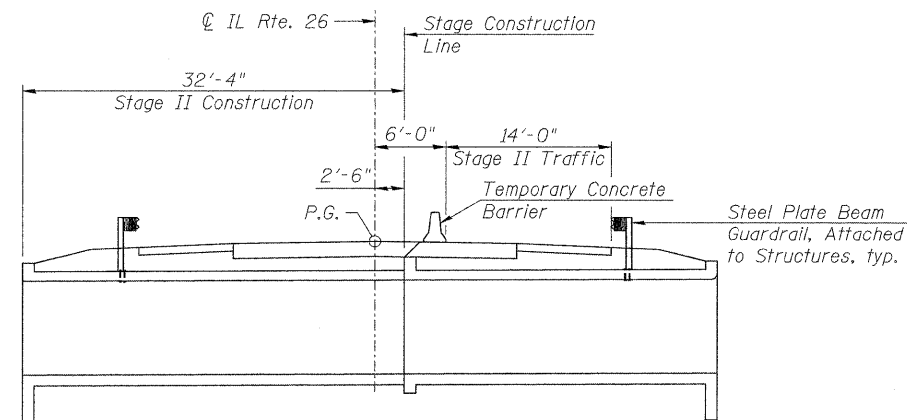
**STAGE I REMOVAL**



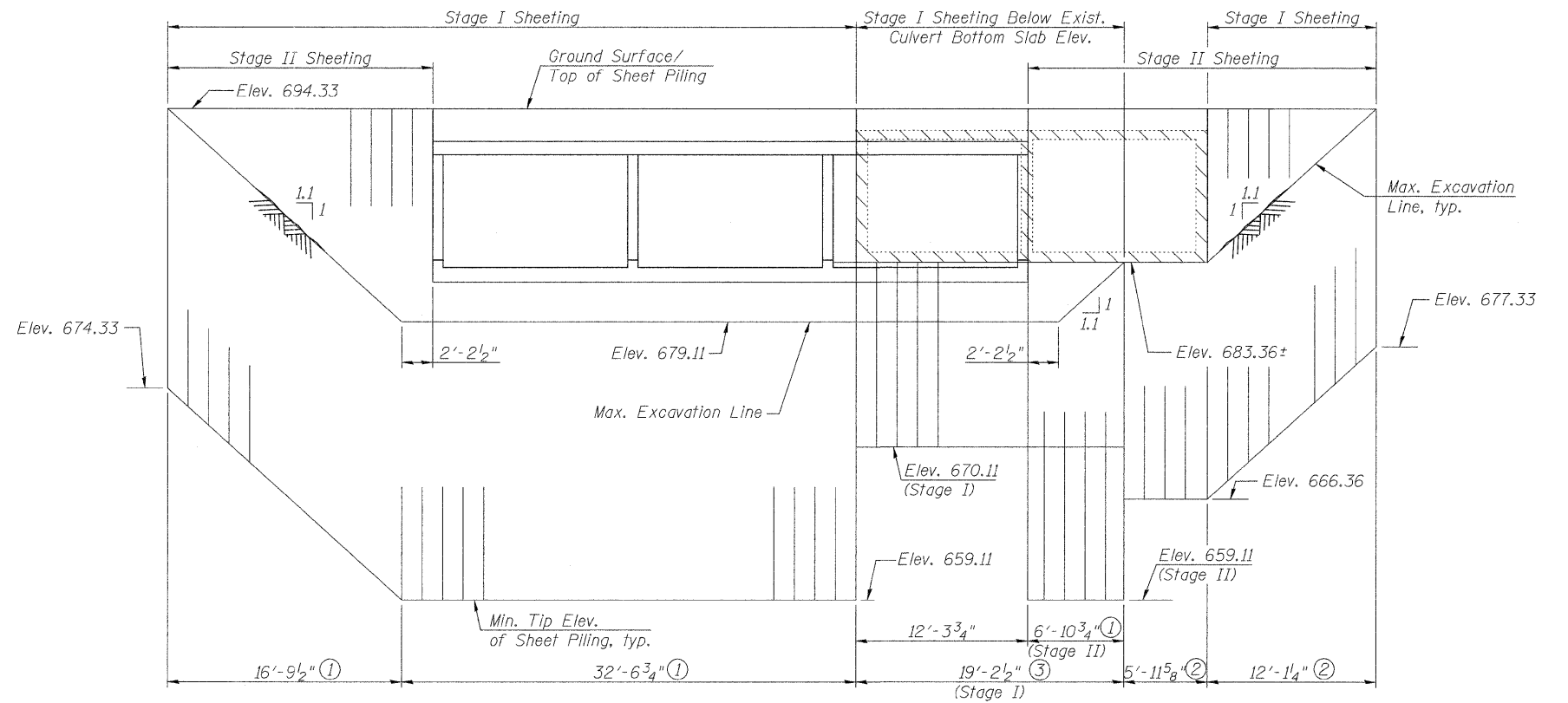
**STAGE I CONSTRUCTION**



**STAGE II REMOVAL**



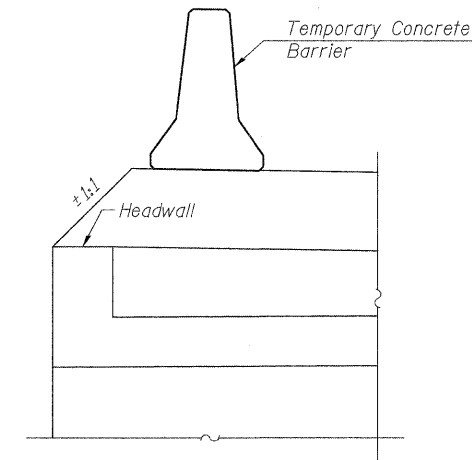
**STAGE II CONSTRUCTION**



**TEMPORARY SHEET PILING**  
(Looking West-Dimensions along Stage Construction Line)

**MIN. SECTION MODULUS**

- ① 41.9 in<sup>3</sup>/ft
- ② 22.1 in<sup>3</sup>/ft
- ③ 2.7 in<sup>3</sup>/ft



**DETAIL A**

- Notes:
1. Hatched area indicates Removal of Existing Structures.
  2. All staging cross sections are looking north.
  3. All dimensions are perpendicular to  $\text{\textcircled{C}}$  Roadway unless noted otherwise.
  4. For details of Temporary Concrete Barrier, see Sheet 4 of 8.
  5. For quantity of Temporary Concrete Barrier, see Roadway plans.
  6. The Contractor shall brace the Breaker-Run Crushed Stone if required during excavation for stage II construction. Cost included with Breaker-Run Crushed Stone.

If the Contractor chooses to alter the temporary cantilevered sheet piling design requirements shown on the plans, a design submittal including plan details and calculations will be required for review and acceptance by the Engineer.



USER NAME =	DESIGNED - MTH	REVISED -
FILE NAME =	CHECKED - KHH	REVISED -
PLOT SCALE =	DRAWN - AJF	REVISED -
PLOT DATE =	CHECKED - MTH	REVISED -

**STATE OF ILLINOIS  
DEPARTMENT OF TRANSPORTATION**

**STAGE CONSTRUCTION DETAILS  
STRUCTURE NO. 052-2031**

SHEET NO. 3 OF 9 SHEETS

F.A.P. RTE.	SECTION	COUNTY	TOTAL SHEETS	SHEET NO.
316	102-BR7	LEE	216	95
				CONTRACT NO. 64D57

ILLINOIS FED. AID PROJECT