

GENERAL NOTES

Fasteners shall be AASHTO M164 Type 1, mechanically galvanized bolts in painted areas and M164 Type 3 in unpainted areas. Bolts 7/8 in. φ, holes 1 1/16 in. φ, unless otherwise noted.

Calculated weight of Structural Steel = 64,920 Pounds

All structural steel shall be AASHTO M 270 Grade 50W. All structural steel shall be cleaned as specified in the Special Provision for "Surface Preparation and Painting Requirements for Weathering Steel".

No field welding is permitted except as specified in the contract documents.

Reinforcement bars shall conform to the requirements of ASTM A 706 Gr 60.

Reinforcement bars designated (E) shall be epoxy coated.

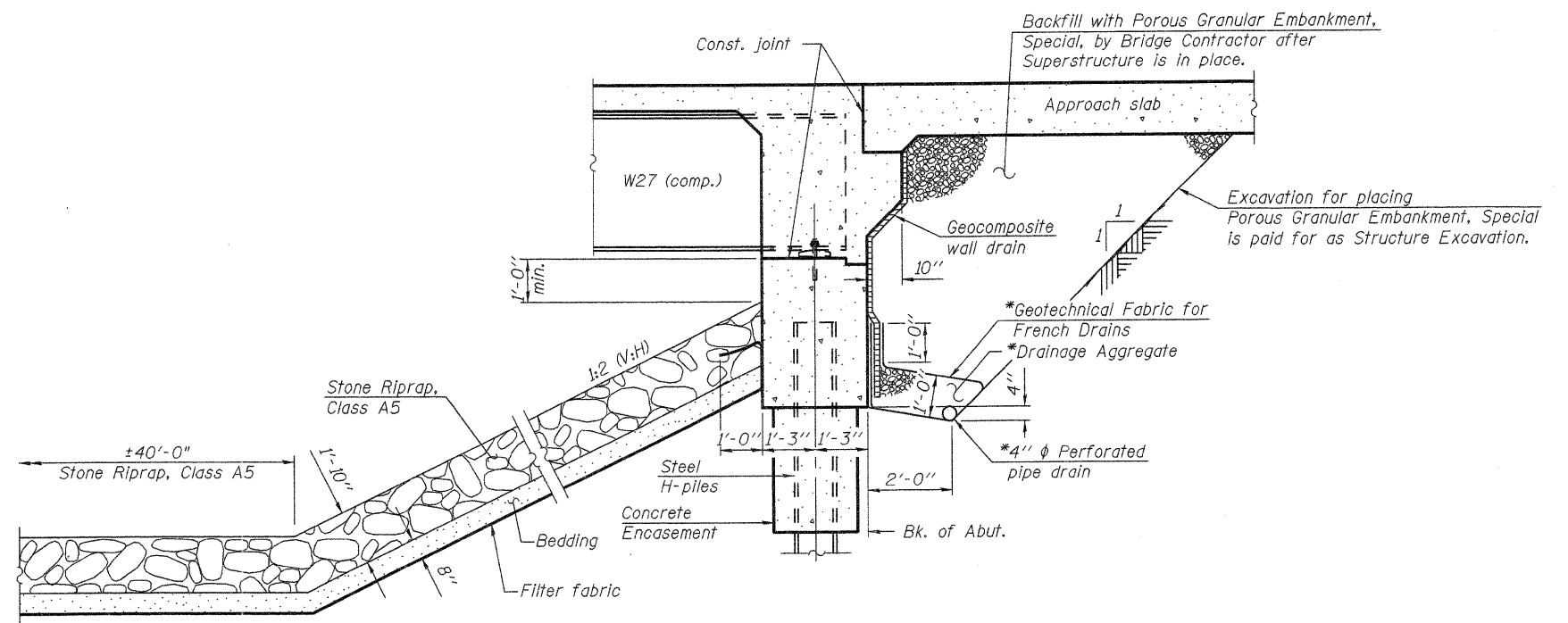
If the Contractor elects to use cantilever forming brackets on the exterior beams, the brackets shall be placed at the same locations as required for the hardwood blocks in Article 503.06(b) of the Standard Specifications. If additional cantilever forming brackets are required, hardwood blocking shall be wedged between the exterior and first interior beam at each of these additional bracket locations.

Bearing seat surfaces shall be constructed or adjusted to the designated elevations within a tolerance of 1/8 inch (0.01 ft.). Adjustment shall be made either by grinding the surface or by shimming the bearings.

Structural steel shall only be painted for a distance equal to the depth of embedment into the concrete cap plus 3 inches. Painted areas shall be primed in the shop with a Department approved zinc rich primer. Field painting will not be required.

Layout of slope protection system may be varied to suit ground conditions in the field as directed by the Engineer.

Slipforming of the parapets is not allowed.



SECTION THRU INTEGRAL ABUTMENT & RIPRAP DETAIL

*Included in the cost of Pipe Underdrains for Structures.

Note:

All drainage system components shall extend to 2'-0" from the end of each wingwall except an outlet pipe shall extend until intersecting with the side slopes. The pipes shall drain into concrete headwalls. (See Article 601.05 of the Standard Specifications and Highway Standard 601101).

TOTAL BILL OF MATERIAL

ITEM	UNIT	SUPER	SUB	TOTAL
Concrete Structures	Cu. Yd.		165.3	165.3
Concrete Superstructure	Cu. Yd.	302.9		302.9
Bridge Deck Grooving	Sq. Yd.	704		704
Protective Coat	Sq. Yd.	861		861
Stud Shear Connectors	Each	2,988		2,988
Reinforcement Bars, Epoxy Coated	Pound	75,570	13,240	88,810
Bar Splicers	Each	686	100	786
Furnishing and Erecting Structural Steel	L. Sum	0.3		0.3
Name Plates	Each	1		1
Removal of Existing Structures No. 3	Each			1
Stone Riprap, Class A5	Sq. Yd.		1,085	1,085
Filter Fabric	Sq. Yd.		1,085	1,085
Porous Granular Embankment, Special	Cu. Yd.		112	112
Structure Excavation	Cu. Yd.		406	406
Furnishing Steel Piles HP12x53	Foot		475	475
Furnishing Steel Piles HP14x73	Foot		685	685
Driving Piles	Foot		1,160	1,160
Test Pile Steel HP12x53	Each		2	2
Test Pile Steel HP14x73	Each		2	2
Concrete Encasement	Cu. Yd.		10.8	10.8
Pipe Underdrains for Structures, 4"	Foot		147	147
Geocomposite Wall Drain	Sq. Yd.		67	67
Underwater Structure Excavation Protection, Location 3	Each		1	1
Underwater Structure Excavation Protection, Location 4	Each		1	1
Temporary Soil Retention System	Sq. Ft.		887	887
Asbestos Bearing Pad Removal	Each	28		28
Anchor Bolts, 1"	Each		48	48

STATION 420+54.63
 BUILT 20__ BY
 STATE OF ILLINOIS
 F.A.P. RT. 316 SEC. 102BR-5
 LOADING HL-93
 STR. NO. 052-0080

NAME PLATE
 See Std. 515001